

3.1

Ex-e/i Cable Glands

Plastic version for Zone 1, 2, 21 and 22 1 - according to EN 60079-0: 2012

3

Conform with latest standards

Cable glands with metric screw-in threads are now standard and had replace the PG cable glands that were formally used.

The CEAG plastic cable glands are in accordance with EN 60079-0: 2012 and can be used in Ex-e/Ex-i housings in hazardous areas of the Zones 1, 2 and 22.

Optional and not used cable glands must be closed with certified blanking plugs. The blanking plugs allow for a flexible and cost effective utilization of the explosion-protected appliances. Changes and upgrades can be then easily carried out at a later date.

The outstanding feature of the CEAG cable glands is the large cable connection area.

Degree of protection

A high IP safety standard is achieved with the integrated sealing lip on the screw-in cable entries. Depending on the surface roughness the use of an additional sealing ring may not be necessary. The good mechanical and handling features are achieved by using a modified Polyamide material and a optimized tooling area.



Features

- Large cable connection area
- Same wrench tool for both hexagons
- Conform accd. to latest EN 60079-0:2012
- Safety standard IP66
- Optimized tooling area
- Trapezoid thread, for a secure hold



Screw plug



Blanking plug



Cable gland -55°C Ex-e



Cable gland -20°C Ex-i

Technical data

Ex e cable glands

Marking accd. to 2014/34/EU	⊕ II 2 G Ex eb IIC Gb / ⊕ II 2 D Ex tb IIIC Db
EC-Type Examination Certificate	PTB 14 ATEX 1015 X
IECEX Certificate of Conformity	IECEX PTB 14.0027X
Marking accd. to IECEx	Ex eb IIC Gb / Ex eb IIC Gb
Permissible ambient temperature	-20 °C up to +70 °C (see ordering details)
M20	-40 °C up to +70 °C (see ordering details)
M25 - M63	-55 °C up to +70 °C (see ordering details)
Degree of protection accd. to EN 60529	IP66 / IP68: 1 m water depth for 0.5 h
Enclosure material	Polyamide

Ex-e screw plug

Marking accd. to 2014/34/EU	⊕ II 2 G Ex e II / ⊕ II 2 D Ex tb IIIC Db IP66 (M63 only for II 2 G)
EC-Type Examination Certificate	PTB 98 ATEX 3130
IECEX Certificate of Conformity	IECEX PTB 03.0000
Marking accd. to IECEx	Ex e IIC Gb / Ex tb IIIC Db IP66/IP65 (M63 only for II 2 G)
Permissible ambient temperature	-55 °C to +55 °C
Degree of protection accd. to EN 60529	IP66 / IP68: 1 m water depth for 0.5 h
Enclosure material	Polyamide

Blanking plug I Reducing rings

Marking accd. to 2014/34/EU	⊕ II 2 G Ex eb IIC Gb / ⊕ II 2 D Ex tb IIIC Db IP66
EC-Type Examination Certificate	PTB 14 ATEX 1015X
IECEX Certificate of Conformity	IECEX PTB 14.0027X
Marking accd. to IECEx	Ex eb IIC Gb / Ex tb IIIC Db
Permissible ambient temperature	-55 °C bis +70 °C
Degree of protection accd. to EN 60529	IP66
Enclosure material	Polyamide

Ex-e/i cable plastic glands



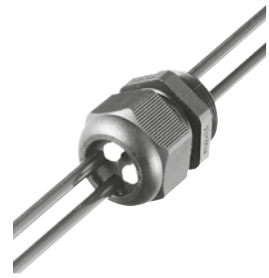
Cable gland -55 °C Ex-e



Cable gland -20 °C Ex-i



Cable gland -20 °C Ex-e



Multiple cable gland

3

Ordering details

Thread	Cable Ø mm			A/F mm	L mm	E mm	Weight kg	OU	Order No. (-20 °C up to +70 °C)	Order No. (-40/-55 °C up to +70 °C)
	seal. 1+2+3	seal. 1+2	seal. 1							

Ex-e cable gland with short thread accd. to EN 50262-black

M12 x 1.5	---	5 - 7	15	19.3	8	0.003	20	GHG 960 1955 R0001	---
M16 x 1.5	5.5 - 7	7 - 10	20	23.0	8	0.006	20	GHG 960 1955 R0002	---
M20 x 1.5	5.5 - 7	7 - 9	9.5 - 13	24	25.0	0.09	20	GHG 960 1955 R0003	---
M20 x 1.5	5.5 - 7	7 - 9	9.5 - 11	24	25.0	0.09	20	---	GHG 960 1955 R0010
M25 x 1.5	8 - 10	10 - 13	13.5 - 17.5	29	29.5	0.017	20	GHG 960 1955 R0004	---
M25 x 1.5	8 - 10	10 - 13	13.5 - 15	29	29.5	0.018	20	---	GHG 960 1955 R0009
M32 x 1.5	14 - 17	17.5 - 21	36	35.5	10	0.026	20	GHG 960 1955 R0005	GHG 960 1955 R0011

Ex-e cable gland with long thread-black

M12 x 1.5	---	5 - 7	15	19.3	12	0.003	20	GHG 960 1955 R0021	---
M16 x 1.5	5.5 - 7	7 - 10	20	23.0	12	0.007	20	GHG 960 1955 R0022	---
M20 x 1.5	5.5 - 7	7 - 9	9.5 - 13	24	25.0	0.010	20	GHG 960 1955 R0023	---
M20 x 1.5	5.5 - 7	7 - 9	9.5 - 11	24	25.0	0.010	20	---	GHG 960 1955 R0029
M25 x 1.5	8 - 10	10 - 13	13.5 - 17.5	29	29.5	0.018	20	GHG 960 1955 R0024	---
M25 x 1.5	8 - 10	10 - 13	13.5 - 15	29	29.5	0.018	20	---	GHG 960 1955 R0030
M32 x 1.5	14 - 17	17.5 - 21	36	35.5	15	0.029	20	GHG 960 1955 R0025	GHG 960 1955 R0031
M40 x 1.5	19 - 22	22 - 28	46	39.5	15	0.046	10	---	GHG 960 1955 R0026
M50 x 1.5	24 - 28	28 - 35	55	44.0	16	0.073	10	---	GHG 960 1955 R0027
M63 x 1.5	29 - 35	36 - 48)	68	47.0	16	0.116	5	---	GHG 960 1955 R0028

Ex-i cable gland with short thread-blue

M12 x 1.5	---	5 - 7	15	19.3	8	0.003	20	GHG 960 1955 R0101	---
M16 x 1.5	5.5 - 7	7 - 10	20	23.0	8	0.006	20	GHG 960 1955 R0102	---
M20 x 1.5	5.5 - 7	7 - 9	9.5 - 13	24	25.0	0.009	20	GHG 960 1955 R0103	---
M20 x 1.5	5.5 - 7	7 - 9	9.5 - 11	24	25.0	0.009	20	---	GHG 960 1955 R0109
M25 x 1.5	8 - 10	10 - 13	13.5 - 17.5	29	29.5	0.017	20	GHG 960 1955 R0104	---
M25 x 1.5	8 - 10	10 - 13	13.5 - 15	29	29.5	0.017	20	---	GHG 960 1955 R0110
M32 x 1.5	14 - 17	17.5 - 21	36	35.5	10	0.026	20	GHG 960 1955 R0105	GHG 960 1955 R0111

Ex-i cable gland with long thread-blue

M12 x 1.5	---	5 - 7	15	19.3	12	0.003	20	GHG 960 1955 R0121	---
M16 x 1.5	5.5 - 7	7 - 10	20	23.0	12	0.007	20	GHG 960 1955 R0122	---
M20 x 1.5	5.5 - 7	7 - 9	9.5 - 13	24	25.0	0.010	20	GHG 960 1955 R0123	---
M20 x 1.5	5.5 - 7	7 - 9	9.5 - 11	24	25.0	0.010	20	---	GHG 960 1955 R0129
M25 x 1.5	8 - 10	10 - 13	13.5 - 17.5	29	29.5	0.018	20	GHG 960 1955 R0124	---
M25 x 1.5	8 - 10	10 - 13	13.5 - 15	29	29.5	0.018	20	---	GHG 960 1955 R0130
M32 x 1.5	14 - 17	17.5 - 21	36	35.5	15	0.029	20	GHG 960 1955 R0125	GHG 960 1955 R0131
M40 x 1.5	19 - 22	22 - 28	46	39.5	15	0.046	10	---	GHG 960 1955 R0126
M50 x 1.5	24 - 28	28 - 35	55	44.0	16	0.073	10	---	GHG 960 1955 R0127
M63 x 1.5	29 - 35	36 - 48 ¹⁾	68	47.0	16	0.116	5	---	GHG 960 1955 R0128

¹⁾ M63 with additional sealing

Cable glands with PG-thread are available on request. The order No. will show 1 pcs. Please note that only order units (OU) can be ordered.



Enlargement cable gland



Reducing rings



Screw plug



Blanking plug

Ordering details

Thread	Cable Ø mm seal. 1+2	seal. 2	A/F mm	L mm	E mm	Weight kg	OU	Order No. (-20 °C up to +70 °C)	Order No. (-40/-55 °C up to +70 °C)
--------	-------------------------	---------	-----------	---------	---------	--------------	----	------------------------------------	--

Multiple cable glands -black

M25 x 1.5	2 x 4.5 - 7		29	29.5	8	0.019	20	GHG 960 1955 R0054	---
M32 x 1.5	4 x 4.5 - 7		36	35.5	10	0.030	20	GHG 960 1955 R0055	---

Slotted cable glands for special cables:

(Breakout-internal cable type orange/ Ultra-Fox Plus type 903 AG 621 02 709/ Ehret / ICS 24 type 84 305 2)

M20 x 1.5 black ²⁾			24	25.0	8	0.010	20	GHG 960 1955 R0403	
M20 x 1.5 blue ²⁾			24	25.0	8	0.010	20	GHG 960 1955 R0413	

Enlargement cable glands (reduced thread diameter)

M16/M20	7 - 9	9.5 - 13	24	25.0	12	0.010	20	GHG 960 1956 R0002	
M20/M25	10 - 13	13.5 - 17.5	29	29.5	13	0.018	20	GHG 960 1956 R0003	
M25/M32	14 - 17	17.5 - 21	36	35.5	13	0.029	20		GHG 960 1956 R0004
M32/M40	19 - 22	22.0 - 28	46	39.5	15	0.046	10		GHG 960 1956 R0005
M40/M50	24 - 28	28.0 - 35	55	44.0	15	0.073	10		GHG 960 1956 R0006
M50/M63	29 - 35	36.0 - 48 ¹⁾	68	47.0	16	0.116	5		GHG 960 1956 R0007

	E mm	Ø D mm	Weight kg	OU	Order No. (-55 °C up to +70 °C)
--	---------	-----------	--------------	----	------------------------------------

Blanking plug for cable glands

M12	30.3	6.0	0.001	20	GHG 960 1944 R0101
M16	33.0	7.0	0.001	20	GHG 960 1944 R0102
M20	34.5	8.5	0.002	20	GHG 960 1944 R0103
M25	36.0	11.0	0.003	20	GHG 960 1944 R0104
M32	39.5	14.0	0.005	20	GHG 960 1944 R0105
M40	42.0	20.0	0.018	10	GHG 960 1944 R0106
M50	44.0	26.0	0.033	10	GHG 960 1944 R0107
M63	45.0	34.0	0.108	5	GHG 960 1944 R0108

Thread	L mm	E mm	Ø D mm	Weight kg	OU	Order No. (-55 °C up to +70 °C)
--------	---------	---------	-----------	--------------	----	------------------------------------

Screw plug

M16 x 1.5	4.0	12	21.5	0.002	20	GHG 960 1952 R0111
M20 x 1.5	4.0	13	25.5	0.004	20	GHG 960 1952 R0112
M25 x 1.5	4.0	13	30.5	0.007	20	GHG 960 1952 R0113
M32 x 1.5	5.5	15	37.5	0.013	10	GHG 960 1952 R0114
M40 x 1.5	5.5	15	45.5	0.020	10	GHG 960 1952 R0115
M50 x 1.5	5.5	16	55.5	0.030	5	GHG 960 1952 R0116
M63 x 1.5	6.5	16	85.0	0.040	5	GHG 960 1952 R0117

¹⁾ M63 with additional sealing

²⁾ Cable dimensions and ambient temperatures see operating instruction

Cable glands with PG-thread are available on request.

The order No. will show 1 pcs. Please note that only order units (OU) can be ordered.

Ex-plastic reducer rings



Cable gland



Screw plug



Blanking plug



Reducing ring

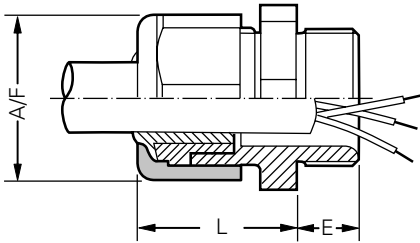
3

Thread 1	Thread 2	A/F mm	L mm	E mm	L1 mm	Weight kg	OU	Order No. (-55 °C up to +70 °C)
Reducing rings								
M20 x 1.5	M16 x 1.5	24	6	8	8	0.014	20	GHG 960 1946 R0071
M25 x 1.5	M20 x 1.5	29	6	8	8	0.016	20	GHG 960 1946 R0072
M32 x 1.5	M20 x 1.5	36	6	10	6	0.017	20	GHG 960 1946 R0056
M32 x 1.5	M25 x 1.5	36	6	10	10	0.016	20	GHG 960 1946 R0074
M40 x 1.5	M25 x 1.5	46	6	10	8	0.023	10	GHG 960 1946 R0059
M40 x 1.5	M32 x 1.5	46	6	10	10	0.021	10	GHG 960 1946 R0077
M50 x 1.5	M32 x 1.5	55	6	12	10	0.036	10	GHG 960 1946 R0062
M50 x 1.5	M40 x 1.5	68	6	12	10	0.032	10	GHG 960 1946 R0080
M63 x 1.5	M40 x 1.5	68	6	12	10	0.040	5	GHG 960 1946 R0065
M63 x 1.5	M50 x 1.5	68	6	12	12	0.030	5	GHG 960 1946 R0083

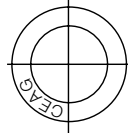
Cable glands with PG-thread are available on request.

The order No. will show 1 pcs. Please note that only order units (OU) can be ordered.

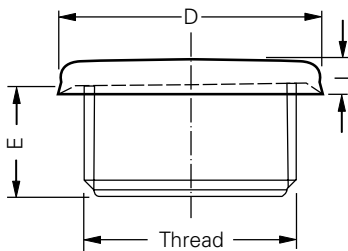
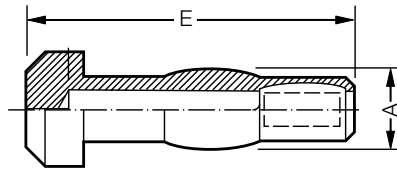
Dimension drawing



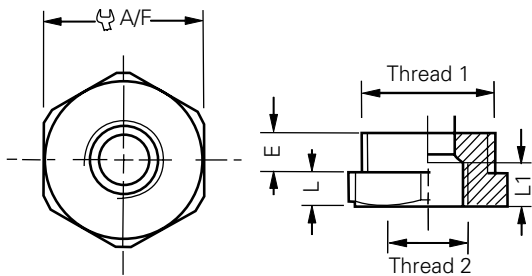
Cable gland



Blanking plug



Screw plug



Reducing rings

Dimensions in mm



Trumpet shaped cable gland

Technical data

Ex-e Trumpet shaped cable gland

Marking accd. to 2014/34/EU	⊕ II 2 G Ex e II / ⊕ II 2 D Ex tD A21 IP66
EC-Type Examination Certificate	PTB 00 ATEX 3121
IEC-Ex Certificate of Conformity	IECEX BKI 08.0007
Marking accd. to IECEx	Ex e II / Ex tD A21 IP66 T85°C
Permissible ambient temperature	-40 °C up to +85 °C
Degree of protection accd. to EN 60529	IP66
Enclosure material	Polyamide

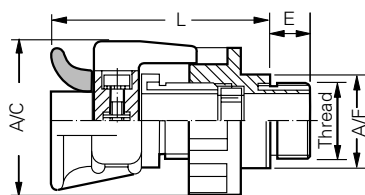
Ordering details

Thread	A/C mm	L mm	E mm	Ø Cable mm	A/F mm	Weight approx. kg	OU	Order No.
Ordering details Trumpet shaped cable gland								
M20 x 1.5	47	64	15	8 – 13	27	0.057	10	GHG 960 1949 R0111
M25 x 1.5	51	65	15	11 – 16	32	0.070	10	GHG 960 1949 R0112
M32 x 1.5	68	80	15	15 – 20	41	0.140	10	GHG 960 1949 R0113
M40 x 1.5	81	86	15	19 – 27	50	0.194	10	GHG 960 1949 R0114
M50 x 1.5	96	95	16	28 – 34	60	0.333	1	GHG 960 1949 R0115
M63 x 1.5	107	105	16	38 – 46	75	0.742	1	GHG 960 1949 R0116

The order No. will show 1 pcs.

Please note that only order units (OU) can be ordered.

Dimension drawing



Trumpet shaped cable gland

Ex-drainage plug



3

Breathing & drainage plug

Technical data

Ex-e Breathing and drainage plug

Marking accd. to 2014/34/EU	⊕ II 2 G Ex e II
EC-Type Examination Certificate	SIRA 99 ATEX 3050 U
IECEX Certificate of Conformity	IECEX SIR 08.0024X
Marking accd. to IECEx	Ex e IIC Gb / Ex eb IIC Gb / Ex tb IIIC Db IP66
Permissible ambient temperature	-50 °C to +85 °C
Degree of protection accd. to EN 60529	IP66
Enclosure material	Polyamide

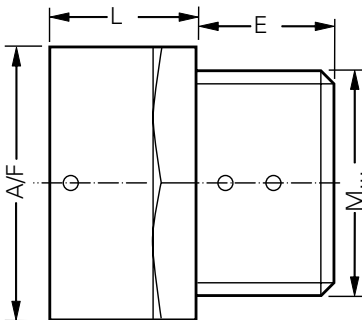
Ordering details

Type	Thread	A/F mm	L mm	E mm	Weight kg	OU	Order No.
Breathing and Drainage plug	M20 x 1.5	40	17	15	0.03	20	GHG 960 1954 R0014
	M25 x 1.5	40	17	15	0.03	20	GHG 960 1954 R0002

The order No. will show 1 pcs.

Please note that only order units (OU) can be ordered.

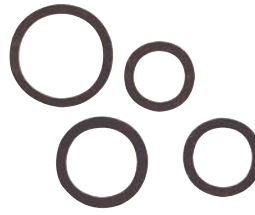
Dimension drawing



Breathing and Drainage plug



Spanner



Gasket



Lock nut

Accessories

Type	A/F mm	Thickness mm	Weight g	OU	Order No.
------	--------	--------------	----------	----	-----------

Ordering details lock nut for cable glands

M12 x 1.5	17	5	9	10	GHG 960 1941 R0031
M16 x 1.5	22	5	14	10	GHG 960 1941 R0032
M20 x 1.5	26	6	22	10	GHG 960 1941 R0033
M25 x 1.5	32	6	32	10	GHG 960 1941 R0034
M32 x 1.5	41	7	59	10	GHG 960 1941 R0035
M40 x 1.5	50	7	79	5	GHG 960 1941 R0036
M50 x 1.5	60	8	98	5	GHG 960 1941 R0037
M63 x 1.5	75	8	150	5	GHG 960 1941 R0038

Type	ØD mm	Thickness mm	Weight g	OU	Order No.
------	-------	--------------	----------	----	-----------

Ordering details gasket for glands

M12 x 1.5	18	1.2	0.44	10	CAP 221 249
M16 x 1.5	22	1.2	0.50	10	CAP 221 649
M20 x 1.5	24	1.2	0.48	10	CAP 222 049
M25 x 1.5	30	1.5	0.69	10	CAP 222 549
M32 x 1.5	42	1.5	1.39	10	CAP 223 249
M40 x 1.5	52	1.5	2.00	10	CAP 224 049
M50 x 1.5	63	1.5	2.00	10	CAP 225 049
M63 x 1.5	77	2.0	4.80	10	CAP 226 349

Type	Size	SW mm	Weight kg	Order No.
------	------	-------	-----------	-----------

Ordering details special spanner for fastening of cable glands

Set 1	M12	15	0.825	GHG 960 1951 R0001
	M16	20		
	M20	24		
	M25	29		
	M32	36		
	M40	46		
Set 2	M50	55	0.905	GHG 960 1951 R0002
	M63	68		

The order No. will show 1 pcs.

Please note that only order units (OU) can be ordered.