

# VXF and GRF outlet boxes, covers and gaskets

## Applications:

VXF and GRF cast outlet boxes are installed in threaded rigid conduit systems to:

- Act as junction boxes
- Act as pull outlets
- Accept round base wiring devices and covers intended for use on 4" outlet boxes (GRF boxes only)
- Act as ceiling or wall mounting for Vaporgard™ lighting fixtures (VXF boxes)
- Mount enclosed and gasketed lighting fixtures: ARB fixture hangers (GRF boxes)

## Features:

VXF:

- Compact, shallow design
- Takes GRF covers
- Multiple tapped conduit openings and pipe plugs for versatility
- Four hubs and three plugs on VXF10 and VXF20
- Five hubs and four plugs on VXFT10 and VXFT20

GRF:

- Surface mounting; flush mounting can be obtained by nailing box to concrete form through mounting lug
- Drilled mounting lugs
- Four conduit bosses spaced 90° apart on sides and one boss on back
- Blank or drilled and tapped bodies (with four side bosses tapped and plugged, plus blank back boss)

## Certifications and compliances:

- UL standard: UL514A (boxes and covers only)
- CSA standard: C22.2

## Standard materials:

- VXF – copper-free aluminum
- GRF – Feraloy iron alloy or copper-free aluminum

## Standard finishes:

- VXF – epoxy enamel
- GRF – electrogalvanized and aluminum acrylic paint

## Options:

### Description

- Hot dip galvanized ..... Suffix HDG
- Available on GRF bodies and covers only*

Ⓐ VXFT has hubs on four sides and back; VXF has hubs on four sides only.

Ⓑ Not available with hot dip galvanized finish.

See Section 6F for complete listing of lighting fixtures and hangers.

## Ordering information:

### VXF tapped surface with lugs

4 hubs, 3 plugsⒶ



Hub size	Cat. #
1/2"	VXF10
3/4"	VXF20

### Surface with lugs

5 hubs, 4 plugsⒶ



Hub size	Cat. #
1/2"	VXFT10
3/4"	VXFT20

### GRF blank surface with lugs



Inside depth	Cat. #
1 3/8"	GRF19
1 15/16"	GRF29
3 1/8"	GRF39

### GRFX tapped surface with lugs

4 hubs, 3 plugs  
Blank back boss



Inside depth	Size tap	Cat. # Iron	Cat. # Aluminum
1 3/8"	1/2"	GRFX119	GRF119
1 3/8"	3/4"	GRFX219	GRF219
2 1/16"	1/2"	GRFX129	GRF129
2 1/16"	3/4"	GRFX229	GRF229
2 1/16"	1"	GRFX329	GRF329
3 1/8"	1/2"	GRFX139	GRF139
3 1/8"	3/4"	GRFX239	GRF239
3 1/8"	1"	GRFX339	GRF339

### GRF blank cover



Description	Cat. # Iron	Cat. # Aluminum
Surface	GRF10Ⓑ	GRF110

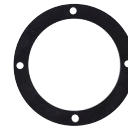
### GRF hub covers



Fixture weight to 125 lbs.

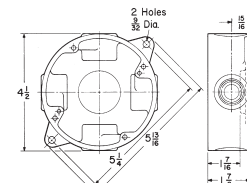
Description	Size	Cat. # Iron	Cat. # Aluminum
Surface	1/2"	GRF11	GRF11 SA
Surface	3/4"	GRF12	GRF12 SA

### GRF gasket

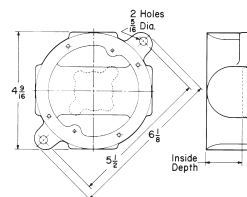


Description	Cat. #
Neoprene	GASK643

## Dimensions (in inches):



VXF-VXFTⒷ



GRF-GRFX