

Stainless steel fittings

Liquidtight fittings

Applications:

- Used in tough, industrial and standard applications
- Made of strong, corrosion-resistant, 304 stainless steel for long, dependable service where superior corrosion resistance and/or strength is required

Features:

- Liquidtight, raintight, oiltight for protection and long life in wet, dusty and corrosive environments
- Hex shaped gland nut allows for easy wrenching, providing a fast, tight installation
- Suitable for wet locations
- Reusable, long ferrule prevents pull-out and tight bend conduit pop-out
- Furnished with locknut and sealing ring
- Third party certified
- Available in straight and 90 degree configurations
- Available in sizes 1/2" to 2"

Certifications and compliances:

- UL Listed liquidtight flexible metal conduit fittings are suitable for use in the following hazardous locations under NEC:
 - Class I, Division 2;
 - Class II, Divisions 1 & 2; and
 - Class III, Divisions 1 & 2;
- Suitable for grounding in sizes 3/8" through 1 1/4" under NEC
- UL Standards 514B, 467
- cUL Standard C22.2 No. 18F
- UL File No. E-19189



Standard materials:

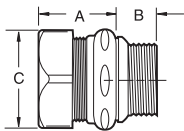
- Body – straight: 304 stainless steel
90°: 304 stainless steel
- Gland nut – 304 stainless steel
- Ferrule – steel
- Gland nut sealing ring – nylon
- Sealing gasket – polypropylene
- Locknut – stainless steel

Standard finish:

- 304 stainless steel – natural

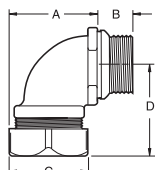
Stainless steel

Straight connectors – 304 stainless steel



Trade size	Cat. # Insulated	Unit qty.	Wt. lbs. per 100	A	B	C
1/2"	LTB50SS	25	21	1.02	0.57	1.22
3/4"	LTB75SS	25	28	1.16	0.63	1.48
1"	LTB100SS	5	46	1.28	0.83	1.72
1 1/4"	LTB125SS	5	57	1.40	0.83	2.17
1 1/2"	LTB150SS	2	68	2.39	0.85	2.39
2"	LTB200SS	1	103	1.69	0.90	2.95

90° angle connectors – 304 stainless steel



Trade Size	Cat. # Insulated	Unit Qty.	Wt. lbs. Per 100	A	B	C	D
1/2"	LTB5090SS	25	30	1.51	0.61	1.22	1.80
3/4"	LTB7590SS	10	43	1.82	0.61	1.48	2.06
1"	LTB10090SS	10	73	2.00	0.73	1.72	2.21
1 1/4"	LTB12590SS	5	96	2.42	0.73	2.17	2.56
1 1/2"	LTB15090SS	2	104	2.77	0.75	2.39	2.99
2"	LTB20090SS	1	143	3.35	0.75	2.94	3.25