

BUSSMANN DENMARK

Literbuen 5, DK-2740 Skovlunde, Int Hlf (+45) 44 85 09 20, int fax (+45) 44 85 09 02

High Speed Fuses Size 000 690V AC

Scale: - -

Type: TYPOWER ZILOX

Drwg.by: Arthur

Rev.: UBC001222

Approved: PK

Date: 900625

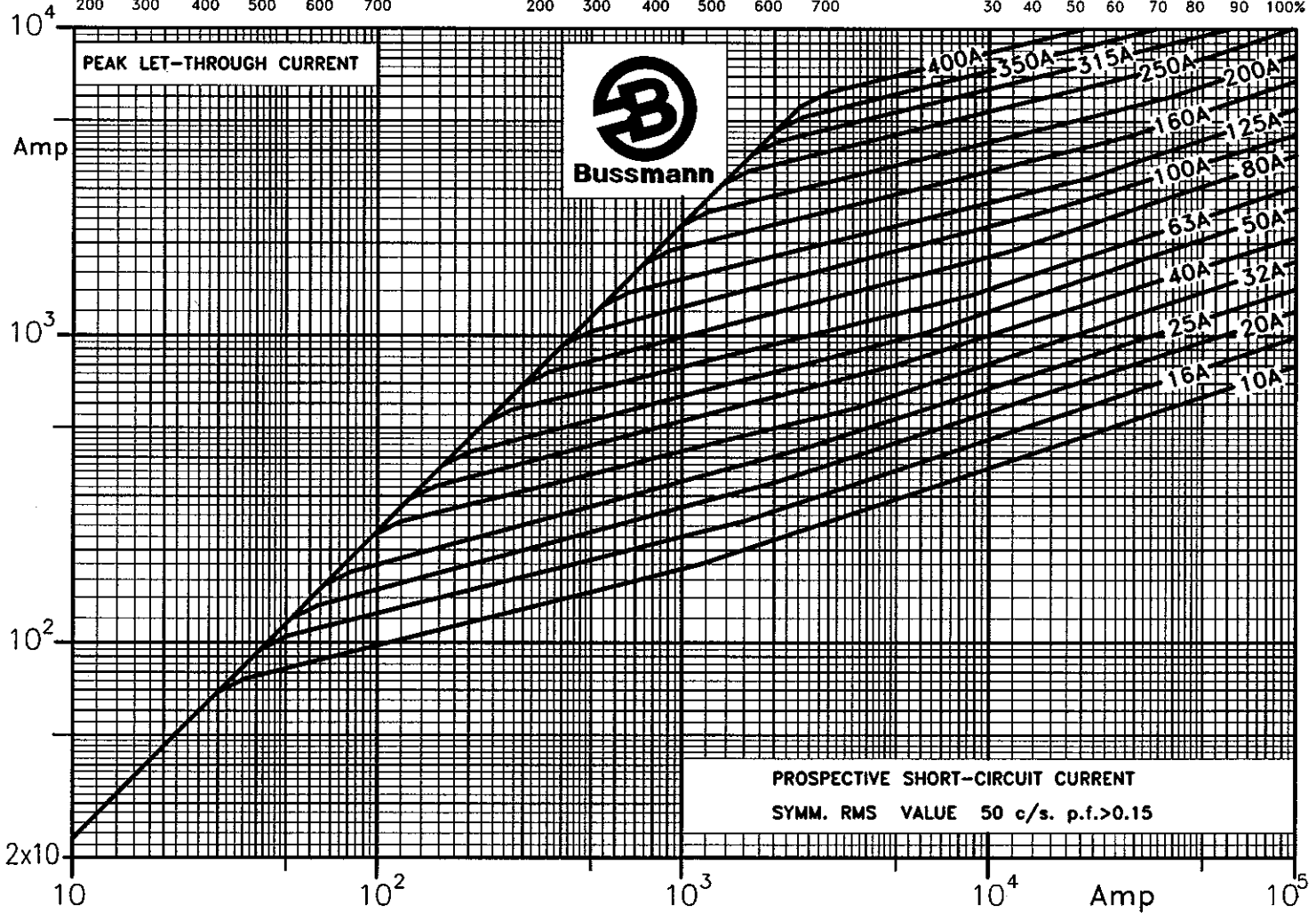
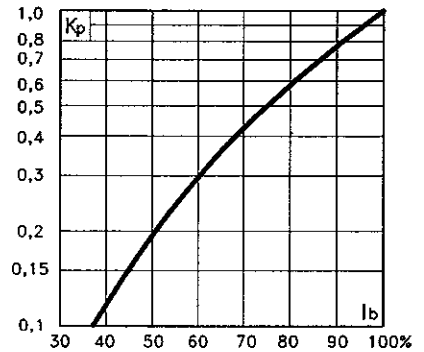
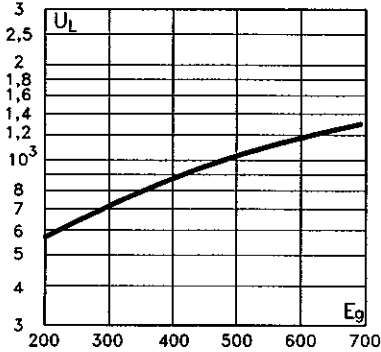
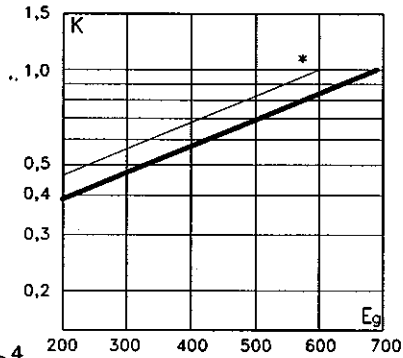
STANDARD RATINGS

170K6310

Rated Voltage RMS-value V	Rated current RMS-value A	Pre-arcing integral (from cold) A ² s	Max. operating I ² t at U _N A ² s	Losses at rated current W
690 [△]	10	3.8	27	3
	16	7.2	51	5.5
	20	11.5	82.5	7
	25	19	140	9
	32	40	285	10
	40	69	490	12
	50	115	815	15
	63	215	1 550	16
	80	380	2 700	19
	100	695	4 950	24
	125	1 250	9 100	28
	160	2 350	17 000	32
	200	4 200	30 000	37
	250	7 750	55 000	42
315	12 000	85 000	53	
350	17 000	125 000	56	
600*	400	25 000	150 000	60

E_g: RMS value of working voltage in V
 K: Correction factor for max. operating I²t
 K_p: Correction factor for watt losses
 I_b: RMS value of load current in % of rated current
 U_L: Max Arc Voltage in V̂
 U_N: Rated Voltage V

[△] Breaking Capacity Test Voltage: 759V RMS (DIN 000: 726V RMS)

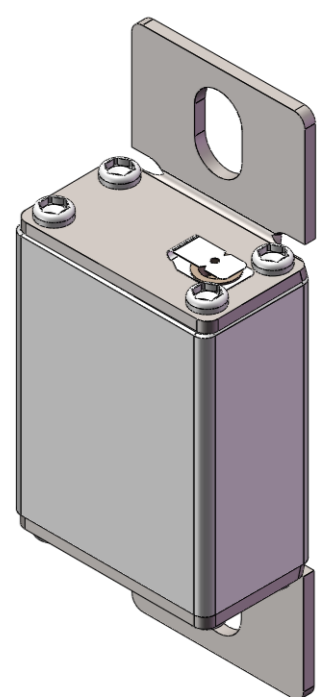
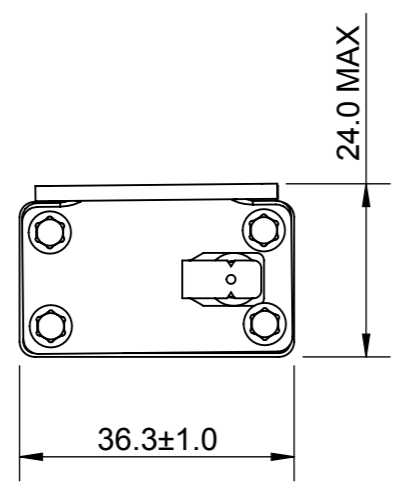
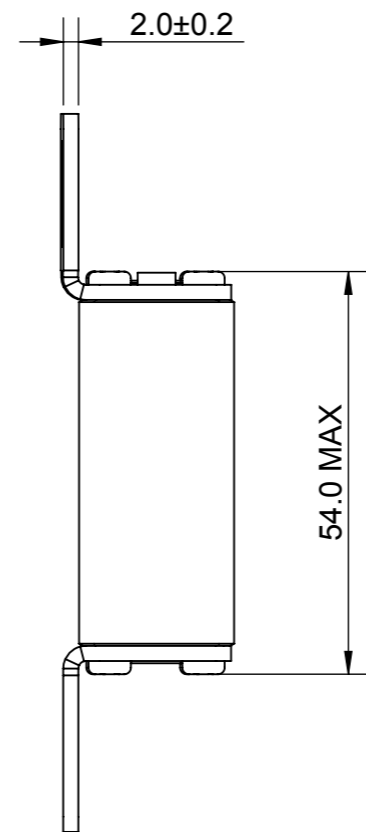
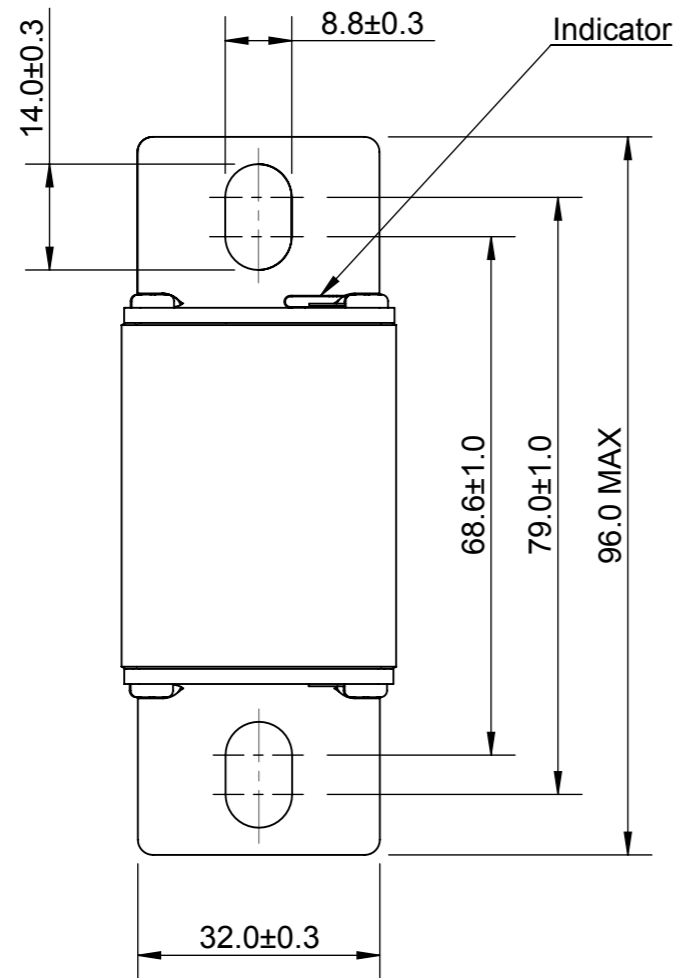


PROSPECTIVE SHORT-CIRCUIT CURRENT
 SYMM. RMS VALUE 50 c/s. p.f.>0.15

BUSSMANN DENMARK Literbuen 5, DK-2740 Skovlunde, Int tlf (+45) 44 85 09 20, int fax (+45) 44 85 09 02	
High Speed Fuses Size 000 690V AC	Scale: - -
Type: TYPower ZILOX	Drwg. by: Arthur
STANDARD RATINGS	Rev.: UBC 030319
	Approved: PK
	Date: 900306

170K6311

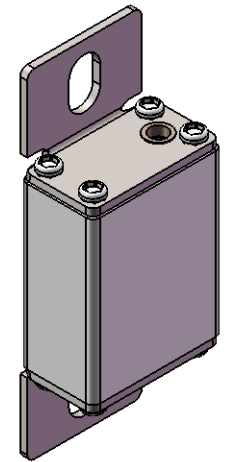
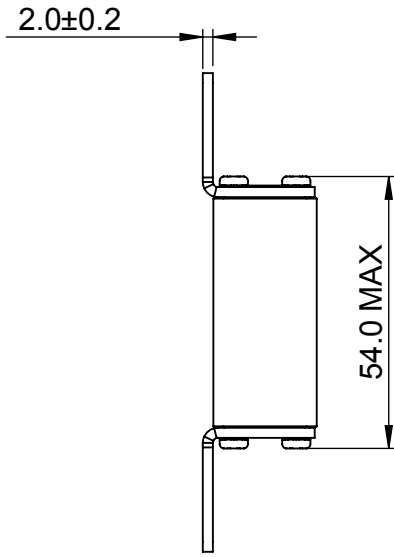
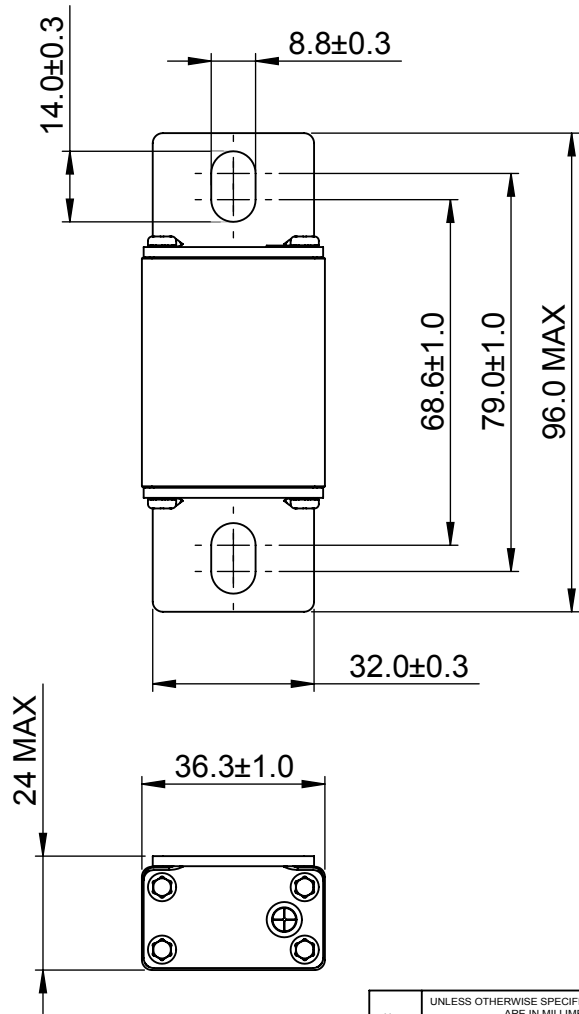
REVISION				
REV	DESCRIPTION	BY	DATE	CHANGE NO.
B	DRAWING UPDATED WITH EATON TEMPLATE	EDK	04/01/2017	BUEI4519




REVISION: 00 MODEL SOURCE FILE: U0107	UNLESS OTHERWISE SPECIFIED, ALL DIMENSIONS ARE IN MILLIMETERS. TOLERANCES UNLESS OTHERWISE SPECIFIED: GENERAL ± 0.2mm ANGULAR ± 1°	TITLE: HIGH SPEED FUSE 000FN/70					 Powering Business Worldwide
	UNCONTROLLED COPY	DRAWN BY: SEN	DATE: 08/05/09	SCALE: NTS	ANGLE: FIRST	SIZE: A3	
	THIS DRAWING IS CONFIDENTIAL AND THE COPYRIGHT OF EATON AND MUST NOT BE COPIED OR PASSED ON TO A THIRD PARTY WITHOUT WRITTEN CONSENT	MATERIAL: VARIOUS	FINISH: NONE		EATON Burton-on-the-Wolds, Leics, LE12 5TH Tel +44 1509 882 600		
DWG NO: 170X0733-01N						REV: B	SHEET: 1 OF 1

Drawing template A3 : Rev 6

REV	DESCRIPTION	BY	DATE	CHANGE NO.
B	DRAWING UPDATED WITH EATON TEMPLATE	EDK	04/01/2017	BUEI4519



MODEL VERSION: 00 MODEL SOURCE FILE: U0172	UNLESS OTHERWISE SPECIFIED, ALL DIMENSIONS ARE IN MILLIMETERS. TOLERANCES UNLESS OTHERWISE SPECIFIED: GENERAL ± 0.2mm ANGULAR ± 1°	TITLE HIGH SPEED FUSE TYPE 000FU/70					 <i>Powering Business Worldwide</i>
	UNCONTROLLED COPY	DRAWN BY: KVS	DATE: 08/05/2010	SCALE: NTS	ANGLE: FIRST	SIZE: A4	
	THIS DRAWING IS CONFIDENTIAL AND THE COPYRIGHT OF EATON AND MUST NOT BE COPIED OR PASSED ON TO A THIRD PARTY WITHOUT WRITTEN CONSENT	MATERIAL: VARIOUS		FINISH: NONE		EATON Burton-on-the-Wolds, Leics, LE12 5TH Tel +44 1509 882 600	
DWG NO: 170X0733-01U					REV: B	SHEET: 1 OF 1	