

**BUSSMANN DENMARK**

Literbuen 5, DK-2740 Skovlunde, Int tlf (+45) 42 91 99 00, int fax (+45) 42 91 11 51

High Speed Fuse Size 0000    660V AC

Type: TYPOWER ZILOX  
STANDARD RATINGS

Scale:

Drwg. by: *Anten*

Rev.: 9224 *[Signature]*

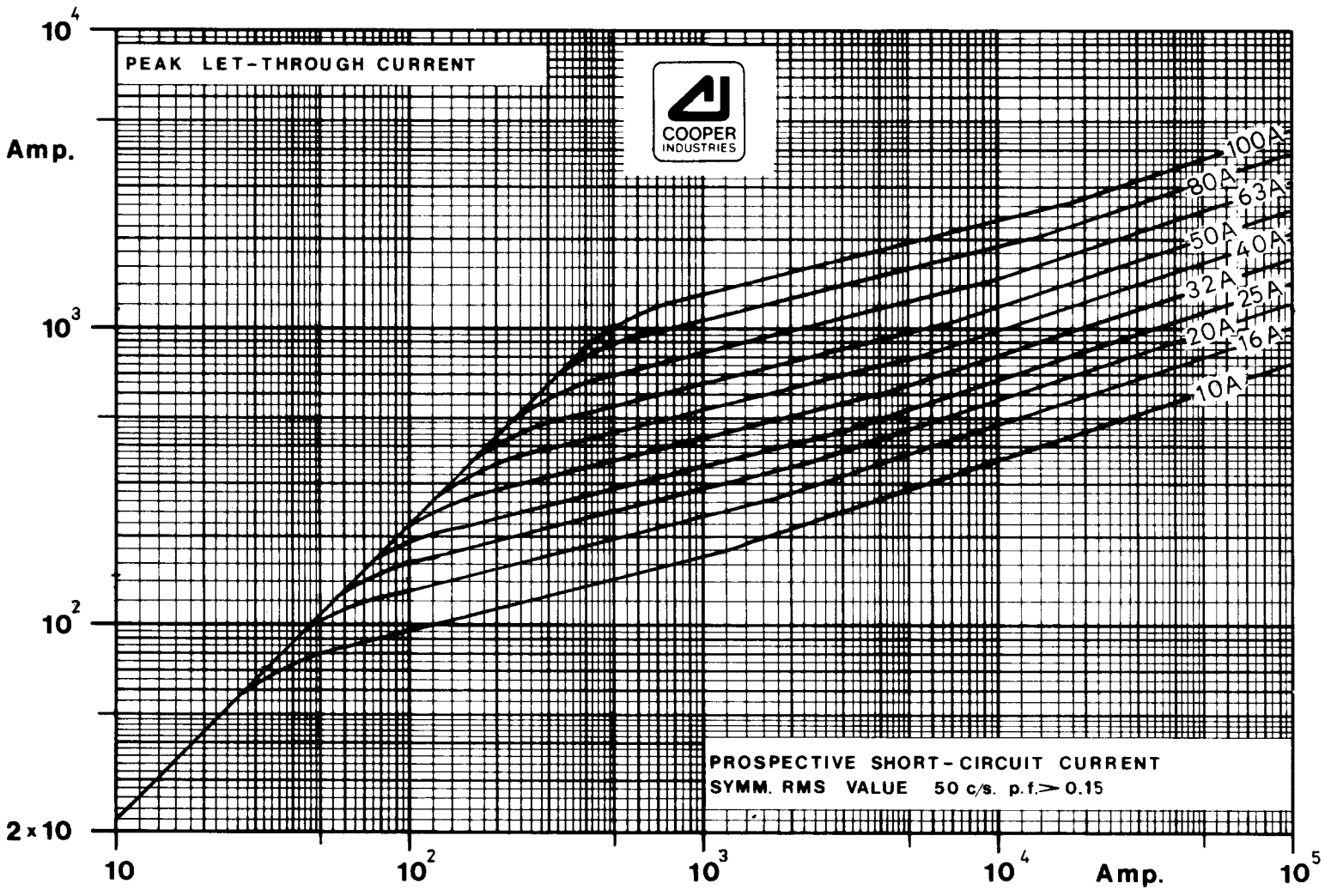
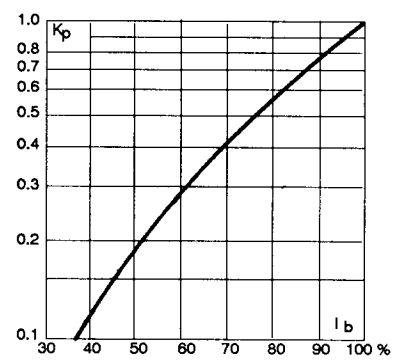
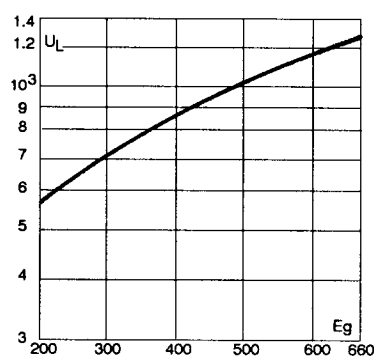
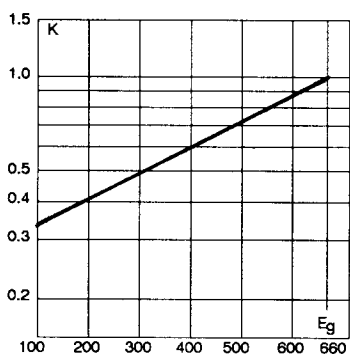
Approved: *[Signature]*

Date: 900622

170K6308

Rated current RMS-value A	Pre-arcing integral (from cold) A <sup>2</sup> s	Max. operating I <sup>2</sup> t at 660V~ A <sup>2</sup> s	Losses at rated current W
10	3,8	25,5	3,5
16	8,5	56,5	4,5
20	15	105	5
25	23,5	160	8
32	43,5	290	9
40	77,5	515	11
50	135	915	12
63	260	1750	13
80	485	3250	17
100	860	5700	18

E<sub>g</sub>: RMS value of working voltage in V.  
 K: Correction factor for max. operating I<sup>2</sup>t  
 K<sub>p</sub>: Correction factor for watt losses  
 I<sub>b</sub>: RMS value of load current in % of rated current  
 U<sub>L</sub>: Max. Arc Voltage in  $\hat{V}$

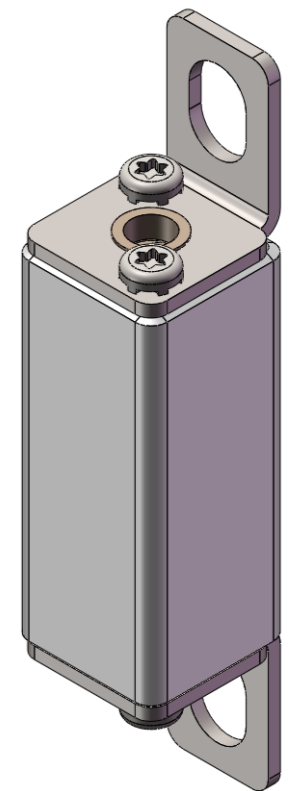
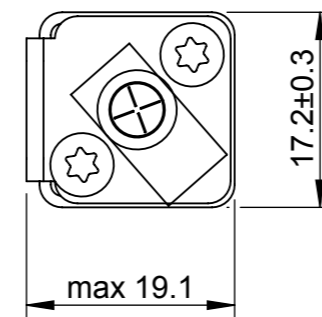
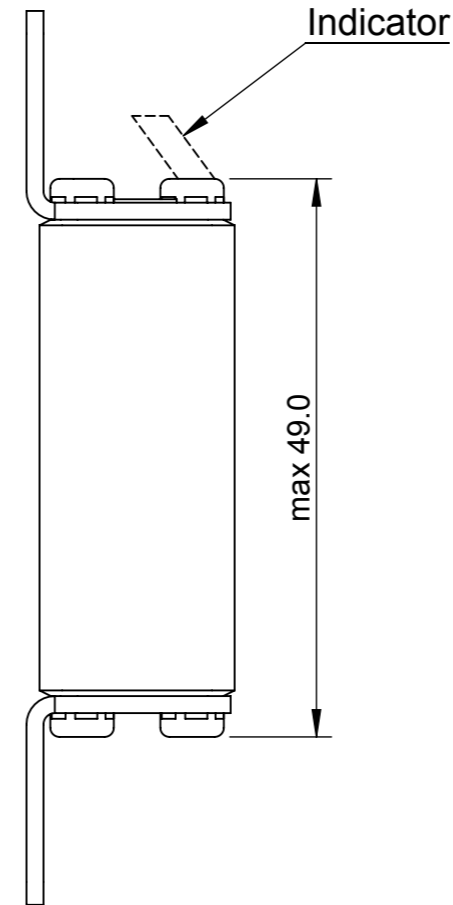
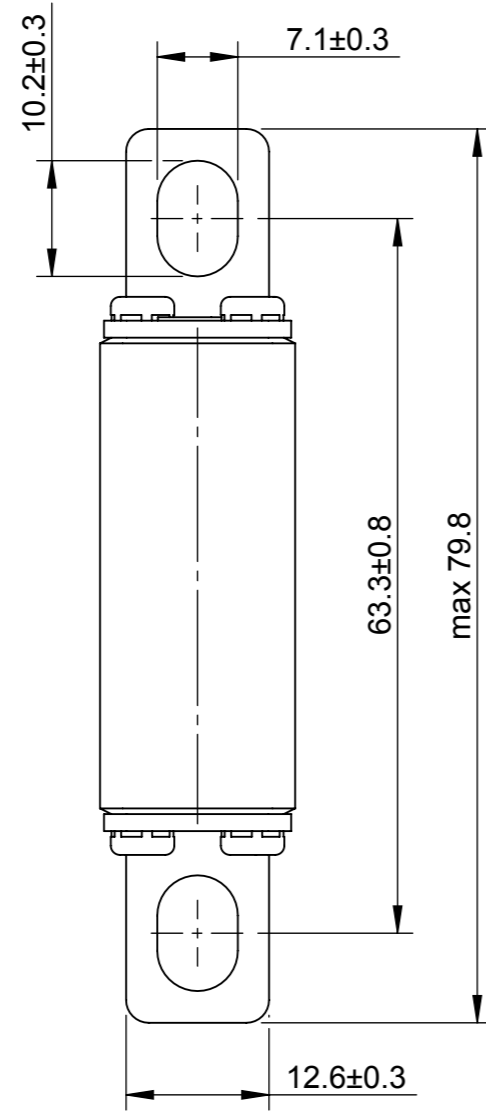



<b>BUSSMANN DENMARK</b> Literbuen 5, DK-2740 Skovlunde, Int tlf (+45) 42 91 99 00, int fax (+45) 42 91 11 51	
High Speed Fuse Size 0000 660V AC	Scale:
Type: TYPOWER ZILOX	Drwg. by: <i>Arthur</i>
STANDARD RATINGS	Rev.:
	Approved: <i>[Signature]</i>
	Date: 900403
	<b>170K6309</b>

33.0118 C

REVISION

REV	DESCRIPTION	BY	DATE	CHANGE NO.
C	DRAWING UPDATED WITH EATON TEMPLATE	KVS	03/01/2017	BUEI4519



MODEL SOURCE FILE: <b>U0038</b>	REVISION: <b>01</b>	UNLESS OTHERWISE SPECIFIED, ALL DIMENSIONS ARE IN MILLIMETERS.		TITLE <b>HIGH SPEED FUSE TYPE 0000/65 BS88</b>			 <i>Powering Business Worldwide</i>		
	UNCONTROLLED COPY	DRAWN BY: <b>NS</b>	DATE: <b>01/04/09</b>	SCALE: <b>NTS</b>	ANGLE: <b>FIRST</b>	SIZE: <b>A3</b>	<b>EATON</b> Burton-on-the-Wolds, Leics, LE12 5TH Tel +44 1509 882 600		
	THIS DRAWING IS CONFIDENTIAL AND THE COPYRIGHT OF EATON AND MUST NOT BE COPIED OR PASSED ON TO A THIRD PARTY WITHOUT WRITTEN CONSENT	MATERIAL: <b>VARIOUS</b>		FINISH: <b>NONE</b>		DWG NO: <b>170X0499</b>			REV: <b>C</b>