

# Bussmann series AC BS88 Centre bolted tags



## Product description

A range of British standard fuse links specifically designed for the protection of general industrial applications e.g. power distribution, cable protection, motor protection.

## Standard features

- Good peak let-through current limitation
- 1:1:6 Selective coordination ratio between 'minor' and 'major' fuse
- gG characteristics for cable protection and general purpose applications
- Power loss values within the limits of IEC 60269

**EATON**

*Powering Business Worldwide*



**CHS Controls AB**

Tel +46 42 38 61 00, Fax +46 42 38 61 29  
chs@chscontrols.se www.chscontrols.se

**Catalogue symbol**

AC(Amps)

**Technical data**

Rated voltage:

- 550 V a.c. / 250 V d.c. (2 to 20 A)
- 500 V a.c. / 250 V d.c. (25 to 32 A)

Rated current: 2 to 32 A

Class of operation: gG

Breaking capacity:

- 80 kA at a.c rated voltage
- 40 kA at 250 V d.c.

**Standards/Approvals**

- BS88
- IEC 60269
- Suitable for use in RoHS compliant applications

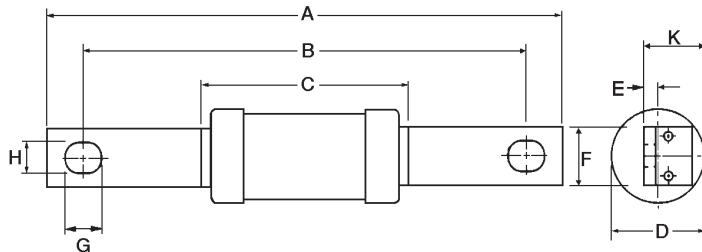
**Packaging**

MOQ 20

**Table 1. Technical data**

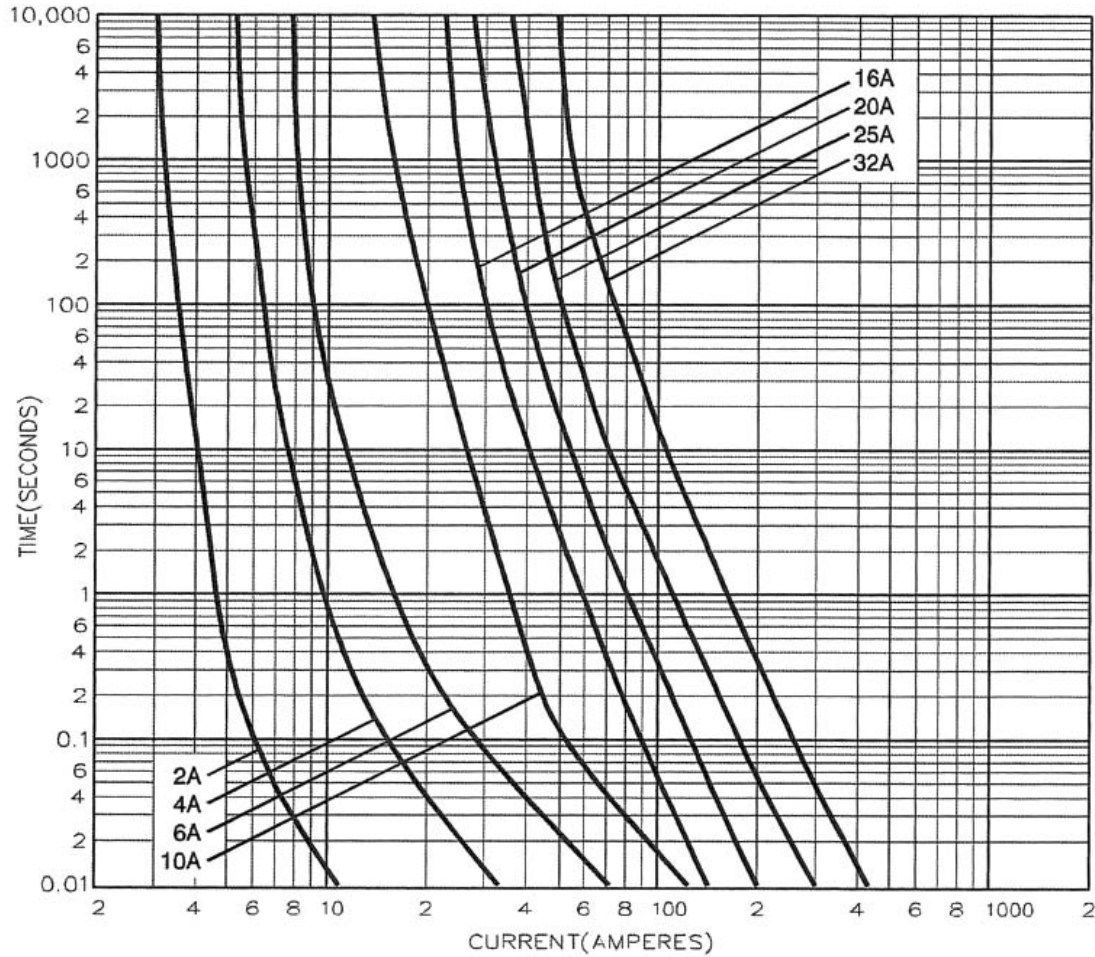
Catalogue number	Rated voltage	Rated current (Amps)	Breaking capacity	Energy integrals Pt (A <sup>2</sup> S)			Watts loss (W)	Product class	Weight (grams)
				Pre-arcing	Total at 415 V a.c.	Total at 550 V a.c.			
AC2	550 V a.c./ 250 V d.c.	2	80 kA at 550 V a.c. / 40 kA at 250 V d.c.	1.2	3.1	3.8	1.2	gG	55
AC4		4		11	31	38	1.4		
AC6		6		32	90	125	1.8		
AC10		10		20	60	80	2.4		
AC16		16		85	240	320	2.9		
AC20		20		220	580	770	3.1		
AC25	500 V a.c./ 250 V d.c.	25	80 kA at 500 V a.c. / 40 kA at 250 V d.c.	500	1400	1850	3.2	gG	55
AC32		32		1000	2760	3700	3.5		

**Dimensions - mm**



Catalogue numbers	A	B	C	D	E	F	G	H	K
AC2-32	113.5	97	55.5	21	1.6	12.7	13.5	7	11.2

Time-current characteristic curve



Changes to the products, to the information contained in this document, and to prices are reserved; so are errors and omissions. Only order confirmations and technical documentation by Eaton is binding. Photos and pictures also do not warrant a specific layout or functionality. Their use in whatever form is subject to prior approval by Eaton. The same applies to Trademarks (especially Eaton, Moeller, and Cutler-Hammer). The Terms and Conditions of Eaton apply, as referenced on Eaton Internet pages and Eaton order confirmations.

**Eaton**  
 EMEA Headquarters  
 Route de la Longeraie 7  
 1110 Morges, Switzerland  
 Eaton.eu

© 2015 Eaton  
 All Rights Reserved  
 Publication No. 4110  
 February 2015



Eaton is a registered trademark.

All other trademarks are property of their respective owners.



**CHS Controls AB**  
 Tel +46 42 38 61 00, Fax +46 42 38 61 29  
 chs@chscontrols.se www.chscontrols.se