

Bussmann series BAO BS88 Offset bolted tags



Product description

A range of British Standard A3 fuse links specifically designed for the protection of general industrial applications e.g. power distribution, cable protection, motor protection.

Standard features

- Good peak let-through current limitation
- 1:1:6 Selective coordination ratio between "minor" and "major" fuse
- Suitable for motor protection if gM type selected
- Power loss values well within the limits of IEC 60269

EATON

Powering Business Worldwide



CHS Controls AB

Tel +46 42 38 61 00, Fax +46 42 38 61 29
chs@chscontrols.se www.chscontrols.se

Catalogue symbol:

- BAO (Amps)

Technical data:

- Rated voltage: 500 V a.c.
- Rated current: 40 to 63 A
- Breaking capacity: 80kA
- BS reference: A3
- Class of operation:
 - gG
 - gM

Standards/approvals:

- BS88
- IEC 60269
- Suitable for use in RoHS compliant applications

Fuse holders (ordered separately)

- CM63F (Camaster fuse holder)
- RS63H (Red Spot fuse holder)

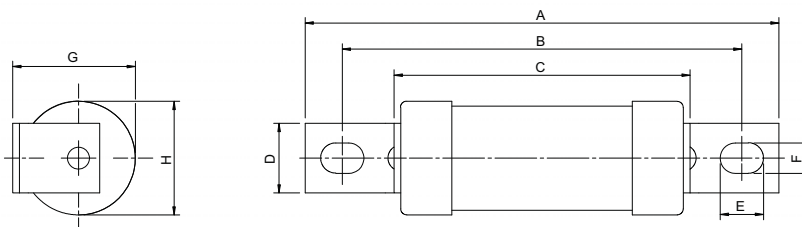
Packaging:

- MOQ 20

Table 1. Technical data

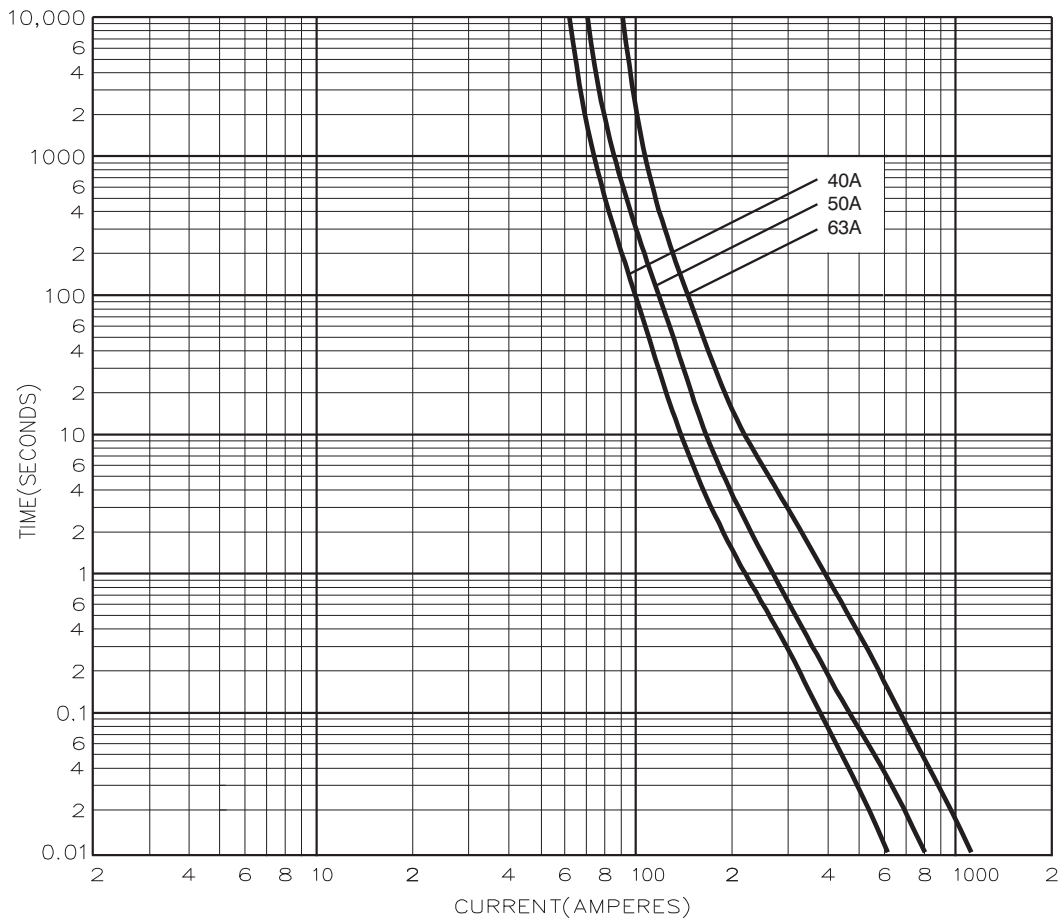
Catalogue number	Rated voltage	Rated current (Amps)	Breaking capacity	Energy integrals I ² t (A ² S)			Watts loss (W)	Product class	Weight (grams)
				Pre-arcing	Total at 415 V a.c.	Total at 550 V a.c.			
BA040	500 V a.c.	40	80 kA at 500 V d.c.	1400	3600	5000	4.7	gG	55 g
BA050	500 V a.c.	50	80 kA at 500 V d.c.	3000	8000	11,250	4.9	gG	55 g
BA063	500 V a.c.	63	80 kA at 500 V d.c.	6700	18,850	25,100	5.6	gG	55 g
BA063M80	500 V a.c.	63M80	80 kA at 500 V d.c.	12,600	33,900	50,000	4.4	gM	55 g
BA063M100	500 V a.c.	63M100	80 kA at 500 V d.c.	24,000	72,900	90,000	3.4	gM	55 g

Dimensions - mm

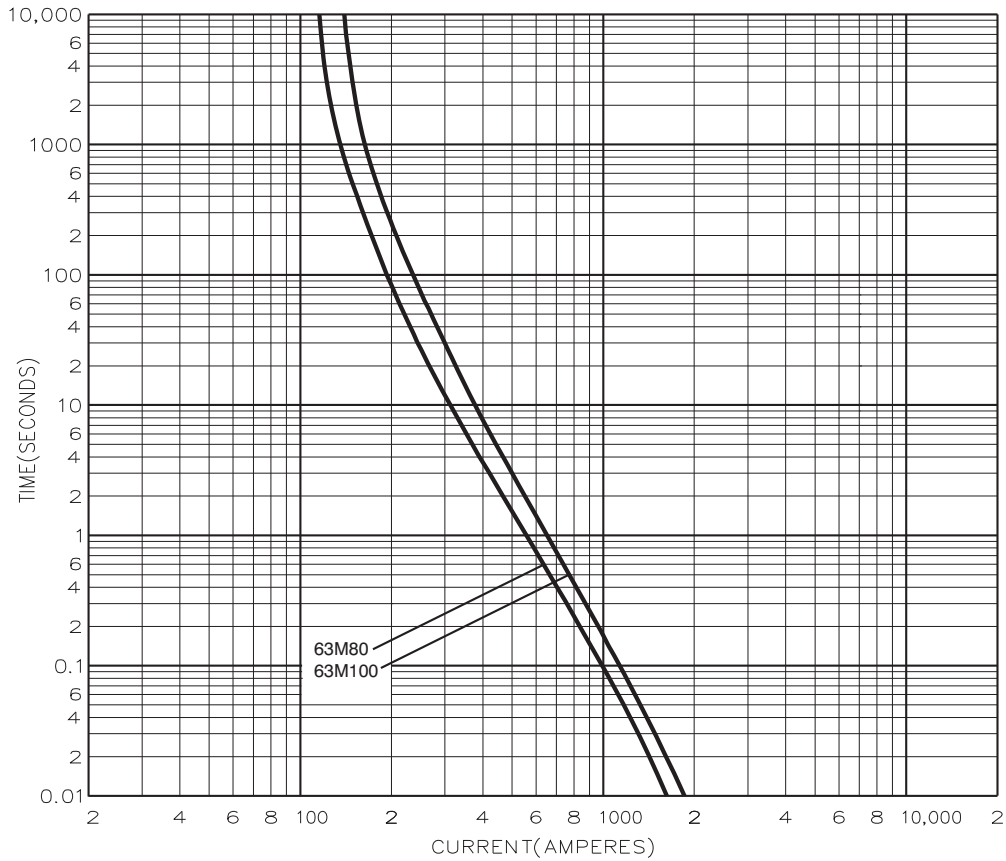


Catalogue numbers	A	B	C	D	E	F	G	H
BA040-63 and BA063M80-100	87	73	54	13	8	5.5	22	21

Time current curve - non motor rated



Time current curve - motor rated



Changes to the products, to the information contained in this document, and to prices are reserved; so are errors and omissions. Only order confirmations and technical documentation by Eaton is binding. Photos and pictures also do not warrant a specific layout or functionality. Their use in whatever form is subject to prior approval by Eaton. The same applies to Trademarks (especially Eaton, Moeller, and Cutler-Hammer). The Terms and Conditions of Eaton apply, as referenced on Eaton Internet pages and Eaton order confirmations.

Eaton
 EMEA Headquarters
 Route de la Longeraie 7
 1110 Morges, Switzerland
 Eaton.eu

© 2015 Eaton
 All Rights Reserved
 Publication No. 4112
 July 2015



Eaton is a registered trademark.

All other trademarks are property of their respective owners.



CHS Controls AB
 Tel +46 42 38 61 00, Fax +46 42 38 61 29
 chs@chscontrols.se www.chscontrols.se