

# Bussmann series BC Industrial HRC fuse links



## Product description

Eaton's Bussmann series range of British standard fuse links is specifically designed for the protection of general industrial applications e.g. power distribution, cable protection, motor protection.

## Standard features

- Good peak let-through current limitation
- 1:1:6 Selective coordination ratio between 'minor' and 'major' fuse
- gG characteristics for cable protection and general purpose applications
- Power loss values within the limits of IEC 60269

**EATON**

*Powering Business Worldwide*



**CHS Controls AB**

Tel +46 42 38 61 00, Fax +46 42 38 61 29  
chs@chscontrols.se www.chscontrols.se

**Catalogue symbol**

- BC(Amps)

**Technical data**

Rated voltage: 500 V a.c. / 250 V d.c.

Rated current: 40 to 63 A

Class of operation: gG / gM

Breaking capacity:

- 80 kA at 500 V a.c.
- 40 kA at 250 V d.c.

**Standards/approvals**

- BS88
- IEC 60269
- Suitable for use in RoHS compliant applications

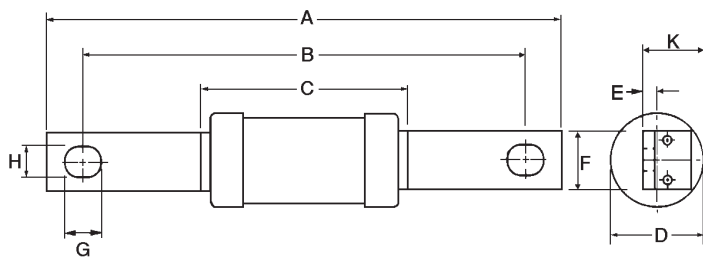
**Packaging**

- MOQ 20

**Table 1. Technical data**

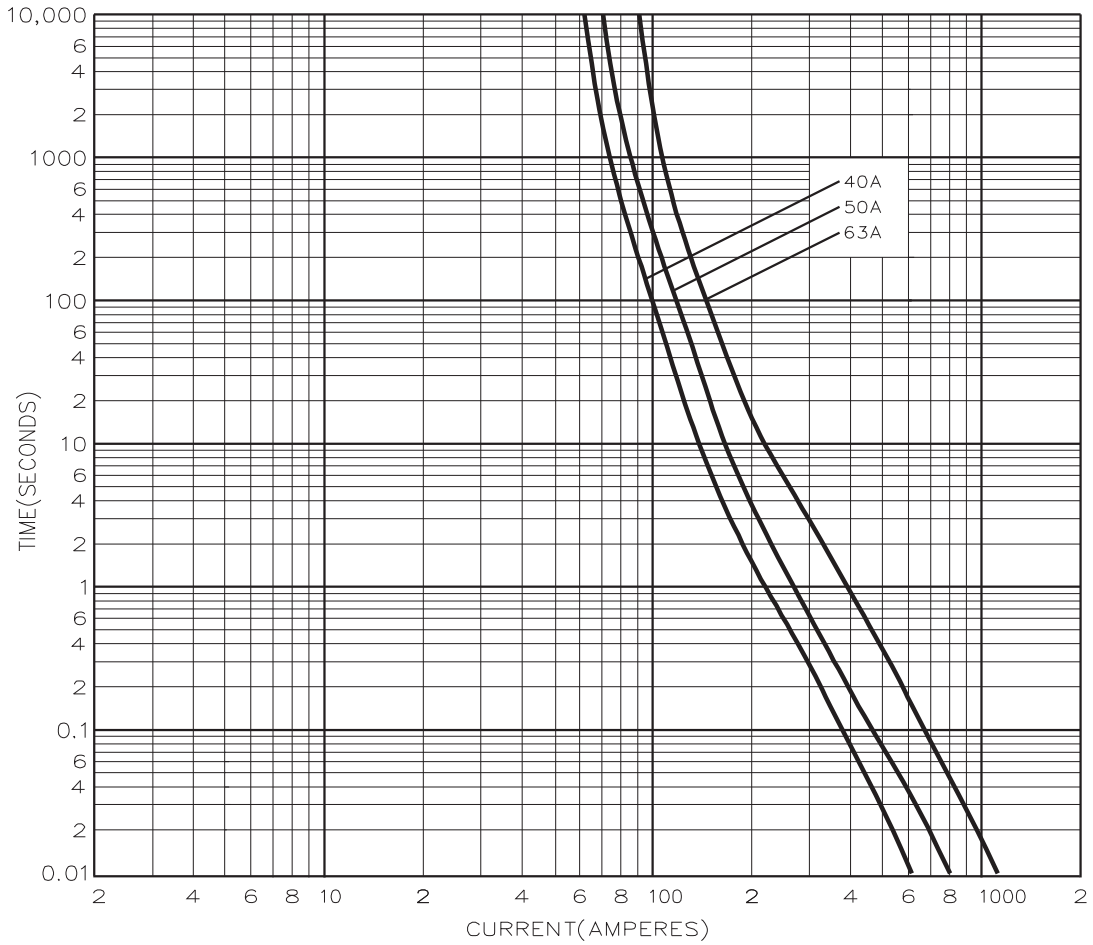
Catalogue number	Rated voltage	Rated current (Amps)	Breaking capacity	Energy integrals I <sup>2</sup> t (A <sup>2</sup> S)			Watts loss (W)	Product class	Weight (grams)
				Pre-arcing	Total at 415 V a.c.	Total at 550 V a.c.			
BC40	500 V a.c. / 250 V d.c.	40	80 kA at 500 V a.c. 40 kA at 250 V d.c.	1400	3600	5000	4.7	gG	55
BC50	500 V a.c. / 250 V d.c.	50		3000	8050	11250	4.9	gG	55
BC63	500 V a.c. / 250 V d.c.	63		6700	18850	25100	5.6	gG	55
BC63M80	500 V a.c. / 250 V d.c.	63M80	80 kA at 500 V a.c. 40 kA at 250 V d.c.	12600	33900	50000	4.4	gM	55
BC63M100	500 V a.c. / 250 V d.c.	63M100		24000	72900	90000	3.4	gM	55

**Dimensions - mm**

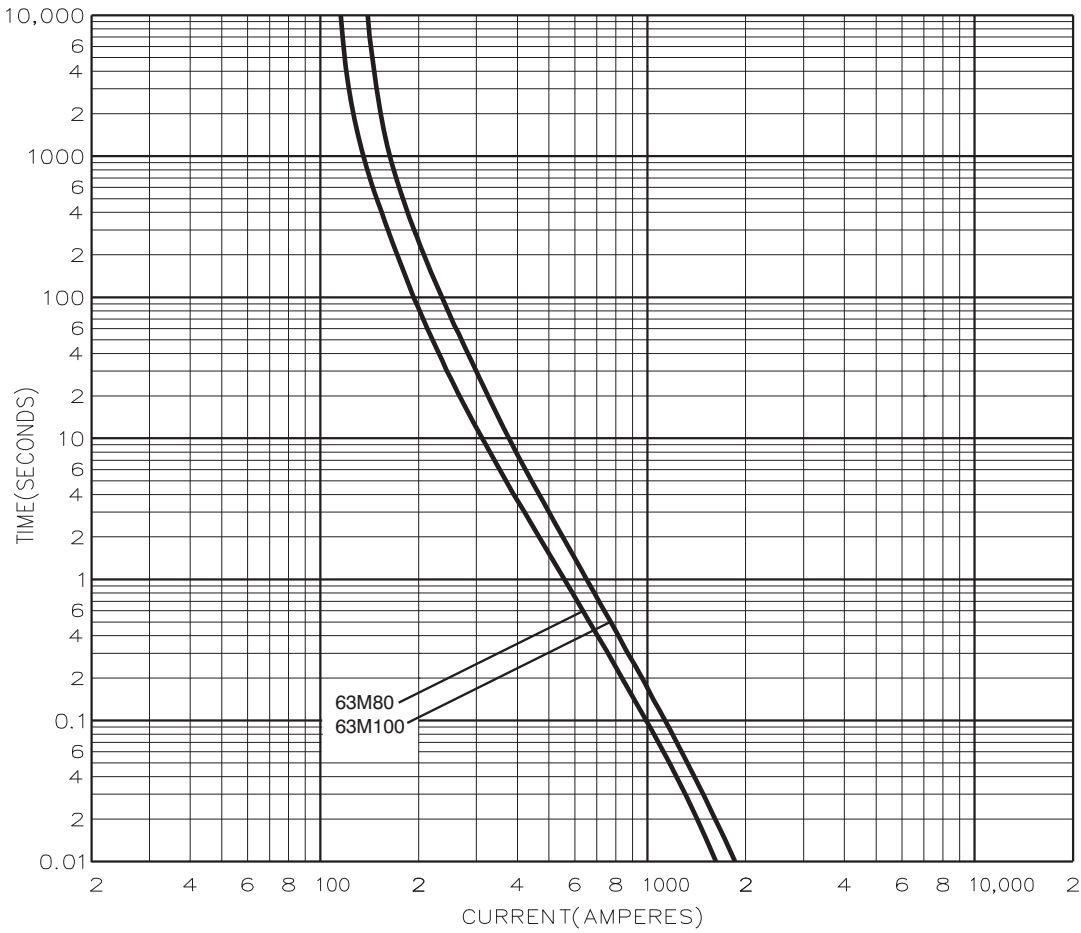


Catalogue numbers	A	B	C	D	E	F	G	H	K
BC40-63 and BC63M80-100	113.5	97	55	21	1.6	7	13.5	12.7	11.2

**Time-current characteristic curve - non motor rated**



**Time-current characteristic curve - motor rated**



Changes to the products, to the information contained in this document, and to prices are reserved; so are errors and omissions. Only order confirmations and technical documentation by Eaton is binding. Photos and pictures also do not warrant a specific layout or functionality. Their use in whatever form is subject to prior approval by Eaton. The same applies to Trademarks (especially Eaton, Moeller, and Cutler-Hammer). The Terms and Conditions of Eaton apply, as referenced on Eaton Internet pages and Eaton order confirmations.

**Eaton**  
 EMEA Headquarters  
 Route de la Longeraie 7  
 1110 Morges, Switzerland  
 Eaton.eu

© 2015 Eaton  
 All Rights Reserved  
 Publication No. 4113  
 July 2015



Eaton is a registered trademark.

All other trademarks are property of their respective owners.

**CHS Controls AB**  
 Tel +46 42 38 61 00, Fax +46 42 38 61 29  
 chs@chscontrols.se www.chscontrols.se