

Bussmann series BD Industrial HRC fuse links



Product description

Eaton's Bussmann series range of British standard fuse links is specifically designed for the protection of general industrial applications e.g. power distribution, cable protection, motor protection.

Standard features

- Good peak let-through current limitation
- 1:1:6 Selective coordination ratio between 'minor' and 'major' fuse
- gG characteristics for cable protection and general purpose applications
- Power loss values within the limits of IEC 60269

EAT•N*Powering Business Worldwide***CHS Controls AB**Tel +46 42 38 61 00, Fax +46 42 38 61 29
chs@chscontrols.se www.chscontrols.se

Catalogue symbol:

- BD(Amps)

Technical data:

- Rated voltage: 500 V a.c./250 V d.c.
- Rated current: 40 to 63 A
- Breaking capacity: 80 kA
- Class of operation: gG

Standards/approvals:

- BS88
- IEC 60269
- Suitable for use in RoHS compliant applications

Fuse holder (sold separately):

- RS200H (Red Spot)

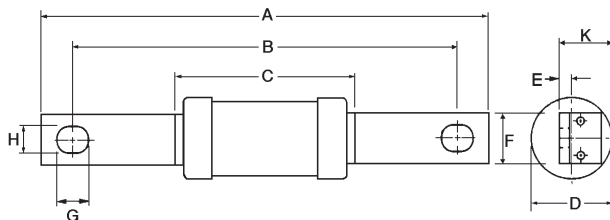
Packaging:

- MOQ: 20

Table 1. Technical data

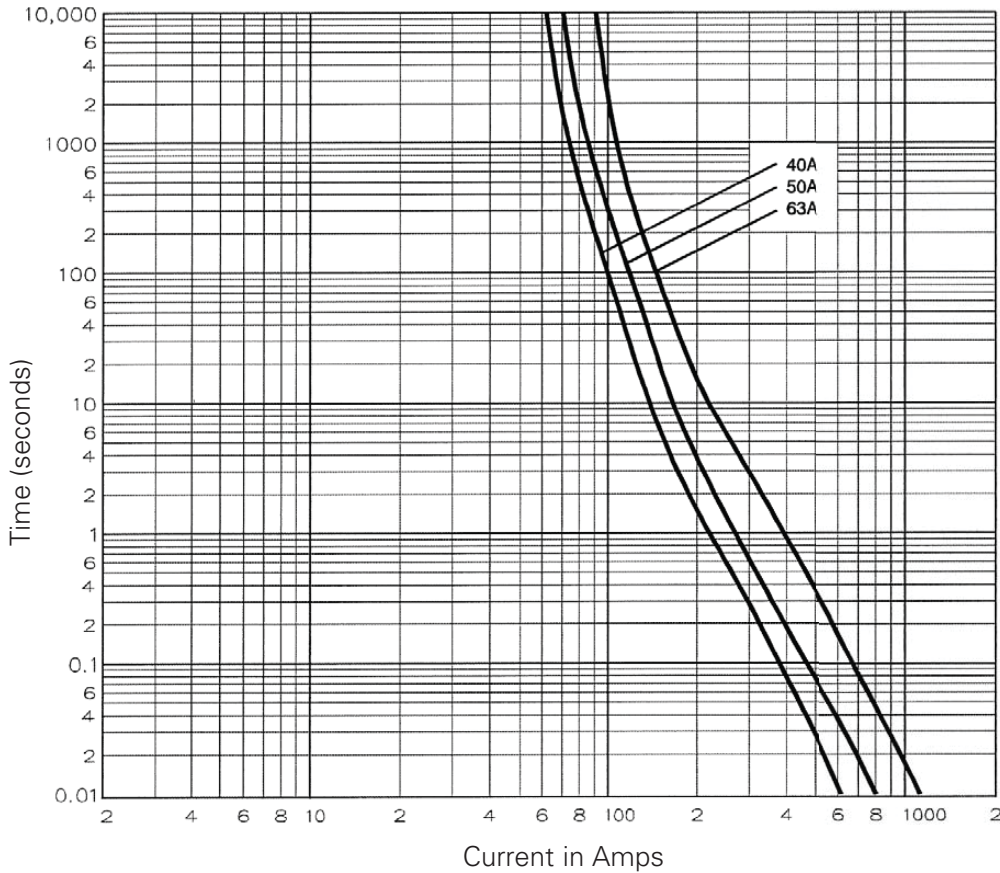
Catalogue number	Rated voltage	Rated current (Amps)	Energy integrals I ² t (A ² S)			Watts loss (W)	Product class	Weight (grams)
			Pre-arcing	Total at 415 V a.c.	Total at 550 V a.c.			
BD40	500 V a.c. / 250 V d.c.	40	1400	3600	5000	4.7	gG	60
BD50	500 V a.c. / 250 V d.c.	50	3000	8050	11,250	4.9	gG	60
BD63	500 V a.c. / 250 V d.c.	63	6700	18,850	25,100	5.6	gG	60

Dimensions - mm



Catalogue numbers	A	B	C	D	E	F	G	H	K
BD40-63	128.5	111	55	21	1.4	14.2	11.8	8.7	11.2

Time current curve



Changes to the products, to the information contained in this document, and to prices are reserved; so are errors and omissions. Only order confirmations and technical documentation by Eaton is binding. Photos and pictures also do not warrant a specific layout or functionality. Their use in whatever form is subject to prior approval by Eaton. The same applies to Trademarks (especially Eaton, Moeller, and Cutler-Hammer). The Terms and Conditions of Eaton apply, as referenced on Eaton Internet pages and Eaton order confirmations.

Eaton
 EMEA Headquarters
 Route de la Longeraie 7
 1110 Morges, Switzerland
 Eaton.eu

© 2015 Eaton
 All Rights Reserved
 Publication No. 4114
 July 2015



Eaton is a registered trademark.

All other trademarks are property of their respective owners.

CHS Controls AB
 Tel +46 42 38 61 00, Fax +46 42 38 61 29
 chs@chscontrols.se www.chscontrols.se