

Bussmann series CD Industrial HRC Fuse Links



Product description

Eaton's Bussmann series range of British Standard fuse links size B1 is specifically designed for the protection of general industrial applications e.g. power distribution, cable protection, motor protection.

Standard features

- Good peak let-through current limitation
- 1:1:6 Selective coordination ratio between "minor" and "major" fuse
- gG characteristics for cable protection and gM for motor protection applications
- Power loss values well within the limits of IEC 60269

EATON

Powering Business Worldwide



CHS Controls AB
Tel +46 42 38 61 00, Fax +46 42 38 61 29
chs@chscontrols.se www.chscontrols.se

Catalogue symbol:

- CD(Amps)

Technical data:

- Rated voltage: 500 V a.c. / 415 V a.c.
- Rated current: 80 to 100 A
- Breaking capacity: 80 kA
- Class of operation: gG and gM
- Size: B1

Standards/approvals:

- BS88
- IEC 60269
- Suitable for use in RoHS compliant applications

Fuse holder (sold separately)

- RS200H

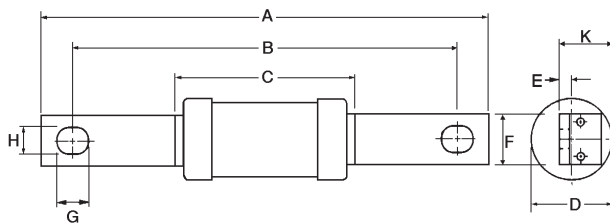
Packaging:

- MOQ 10

Table 1. Technical data

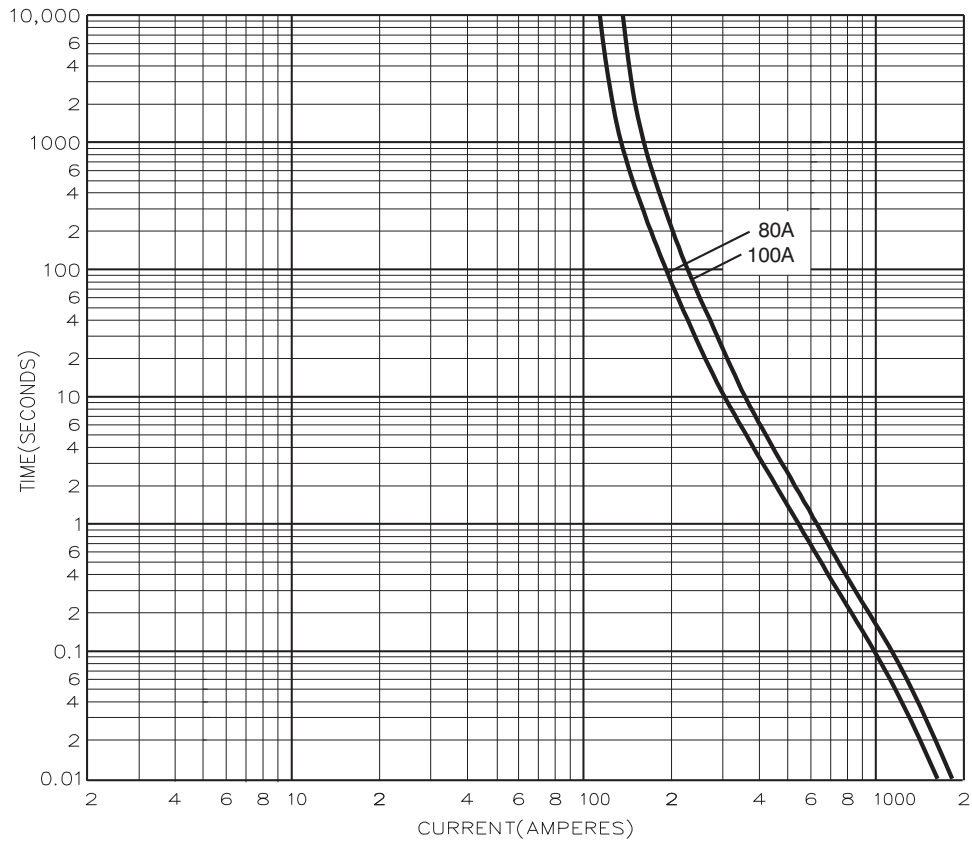
Part number	Voltage	Current rating (amps)	Energy integrals I ² t (A ² S)		Watts loss W	Product class	Weight
			Pre-arcing	Total at 415 V			
CD80	500 V a.c.	80	13,000	35,200	7.2	gG	75g
CD100	500 V a.c.	100	25,000	76,500	8.5	gG	75g
CD100M125	415 V a.c.	100M125	57,000	150,000	11	gM	105g
CD100M160	415 V a.c.	100M160	72,500	190,000	13	gM	105g
CD100M200	415 V a.c.	100M200	120,000	290,000	14	gM	115g

Dimensions - mm

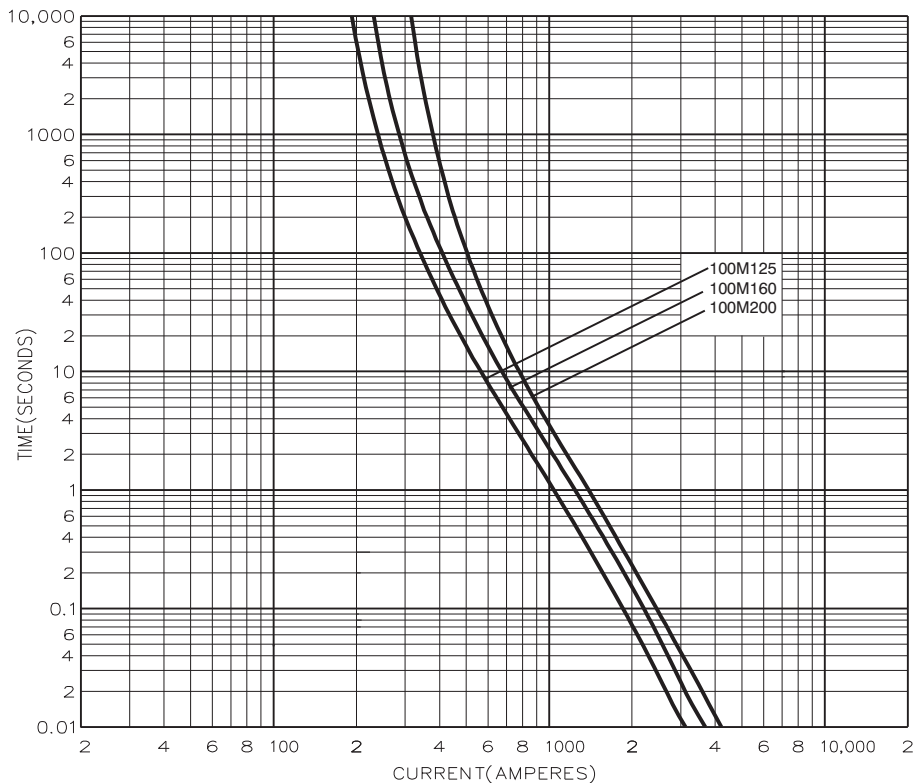


Catalogue numbers	A	B	C	D	E	F	G	H	K
CD80-100	126	111	58.5	21	3.2	14.3	11.1	8.7	19.5
CD100M125-160	126	111	58.5	26	3.2	14.3	11.1	8.7	22
CD100M200	136	111	47	31	3.2	19	12.5	8.7	22.5

Time current curve - CD80 and CD100



Time current curve - CD100M



Changes to the products, to the information contained in this document, and to prices are reserved; so are errors and omissions. Only order confirmations and technical documentation by Eaton is binding. Photos and pictures also do not warrant a specific layout or functionality. Their use in whatever form is subject to prior approval by Eaton. The same applies to Trademarks (especially Eaton, Moeller, and Cutler-Hammer). The Terms and Conditions of Eaton apply, as referenced on Eaton Internet pages and Eaton order confirmations.

Eaton
EMEA Headquarters
Route de la Longeraie 7
1110 Morges, Switzerland
Eaton.eu

© 2015 Eaton
All Rights Reserved
Publication No. 4116
July 2015



Eaton is a registered trademark.

All other trademarks are property of their respective owners.

	CHS Controls AB Tel +46 42 38 61 00, Fax +46 42 38 61 29 chs@chscontrols.se www.chscontrols.se
--	---