

Bussmann series EFS BS88 Center bolted tags



Product description

Eaton's Bussmann series range of British Standard fuse links is specifically designed for the protection of general industrial applications e.g. power distribution, cable protection, motor protection.

Standard features

- Good peak let-through current limitation
- 1:1:6 Selective coordination ratio between "minor" and "major" fuse
- gG characteristics for cable protection and general purpose applications
- Power loss values well within the limits of IEC 60269

EATON*Powering Business Worldwide***CHS Controls AB**Tel +46 42 38 61 00, Fax +46 42 38 61 29
chs@chscontrols.se www.chscontrols.se

Catalogue symbol:

- EFS (Amps)

Technical data:

- Rated voltage: 415 V a.c. (gG)
- Rated current: 125 to 315 A
- Breaking capacity: 80 kA
- Class of operation: gG

Standards/approvals:

- BS88
- IEC 60269
- RoHS compliant

Fuse holders (ordered separately)

- RS400H

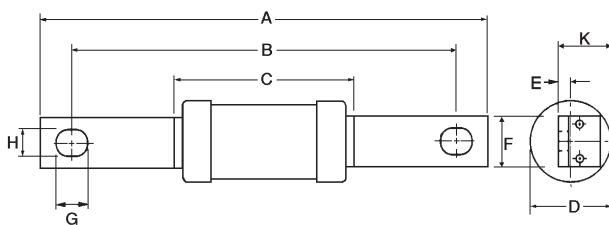
Packaging:

- MOQ 1

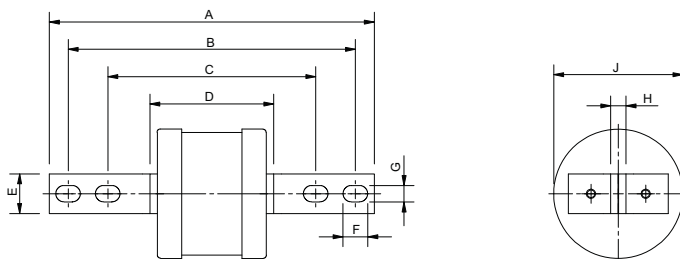
Table 1. Technical data

| Part number | Rated voltage | Rated current (Amps) | Energy integrals I ² t (A ² S) | | Watts loss |
|-------------|---------------|----------------------|--|---------------|------------|
| | | | Pre-arcing | Total at 415V | W |
| EFS125 | 415 V a.c. | 125 | 29,500 | 71,000 | 11 |
| EFS160 | 415 V a.c. | 160 | 57,000 | 135,000 | 13 |
| EFS200 | 415 V a.c. | 200 | 120,000 | 290,000 | 14 |
| EFS250 | 415 V a.c. | 250 | 200,000 | 480,000 | 18 |
| EFS315 | 415 V a.c. | 315 | 265,000 | 635,000 | 22 |

Dimensions - mm



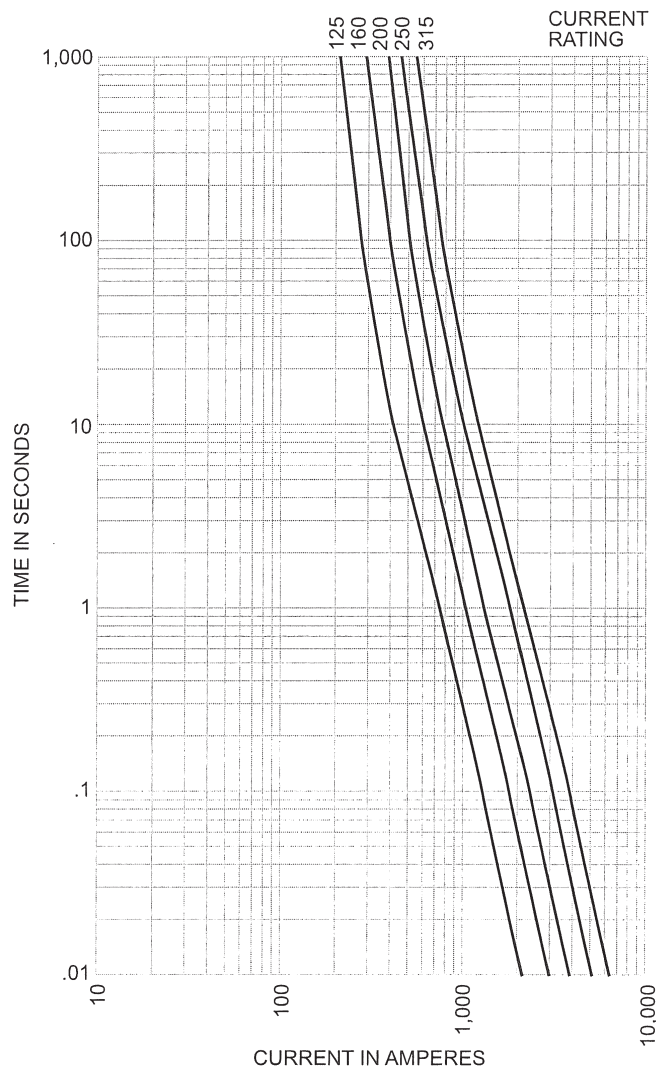
| Catalogue numbers | A | B | C | D | E | F | G | H | K |
|-------------------|-----|-----|----|----|-----|----|------|------|------|
| EFS125-250 | 158 | 133 | 47 | 31 | 3.2 | 19 | 12.5 | 10.5 | 22.5 |



| Catalogue numbers | A | B | C | D | E | F | G | H | J |
|-------------------|-----|-----|-----|----|------|------|------|-----|----|
| EFS315 | 209 | 184 | 133 | 50 | 25.4 | 12.5 | 10.5 | 4.7 | 38 |

Time current curve

Time-Current Characteristic Curve (Full Size Curves Available)



Changes to the products, to the information contained in this document, and to prices are reserved; so are errors and omissions. Only order confirmations and technical documentation by Eaton is binding. Photos and pictures also do not warrant a specific layout or functionality. Their use in whatever form is subject to prior approval by Eaton. The same applies to Trademarks (especially Eaton, Moeller, and Cutler-Hammer). The Terms and Conditions of Eaton apply, as referenced on Eaton Internet pages and Eaton order confirmations.

Eaton
EMEA Headquarters
Route de la Longeraie 7
1110 Morges, Switzerland
Eaton.eu

© 2015 Eaton
All Rights Reserved
Publication No. 4121
July 2015



Eaton is a registered trademark.

All other trademarks are property of their respective owners.



CHS Controls AB
Tel +46 42 38 61 00, Fax +46 42 38 61 29
chs@chscontrols.se www.chscontrols.se