

# Bussmann series OSD BS88 Offset bolted tags



## Product description

Eaton's Bussmann series range of OSD British Standard fuse links is specifically designed for the protection of general industrial applications e.g. power distribution and cable protection.

## Standard features

- Good peak let-through current limitation
- 1:1:6 Selective coordination ratio between "minor" and "major" fuse
- gG characteristics for cable protection and general purpose applications
- Power loss values well within the limits of IEC 60269

**EAT•N**

*Powering Business Worldwide*



**CHS Controls AB**

Tel +46 42 38 61 00, Fax +46 42 38 61 29  
chs@chscontrols.se www.chscontrols.se

**Catalogue symbol:**

- OSD(Amps)

**Technical data:**

- Rated voltage: 500 V a.c. (gG) / 415 V a.c. (gM)
- Rated current: 80 to 100 A
- Breaking capacity: 80 kA
- Class of operation: gG and gM

**Standards/approvals:**

- BS88
- IEC 60269
- Suitable for use in RoHS compliant applications

**Fuse holder (ordered separately)**

- CM100F (Camaster)

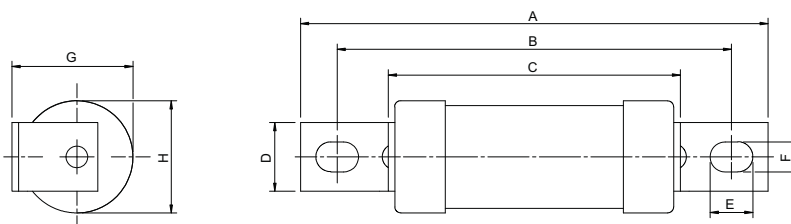
**Packaging:**

- MOQ 20

**Table 1. Technical data**

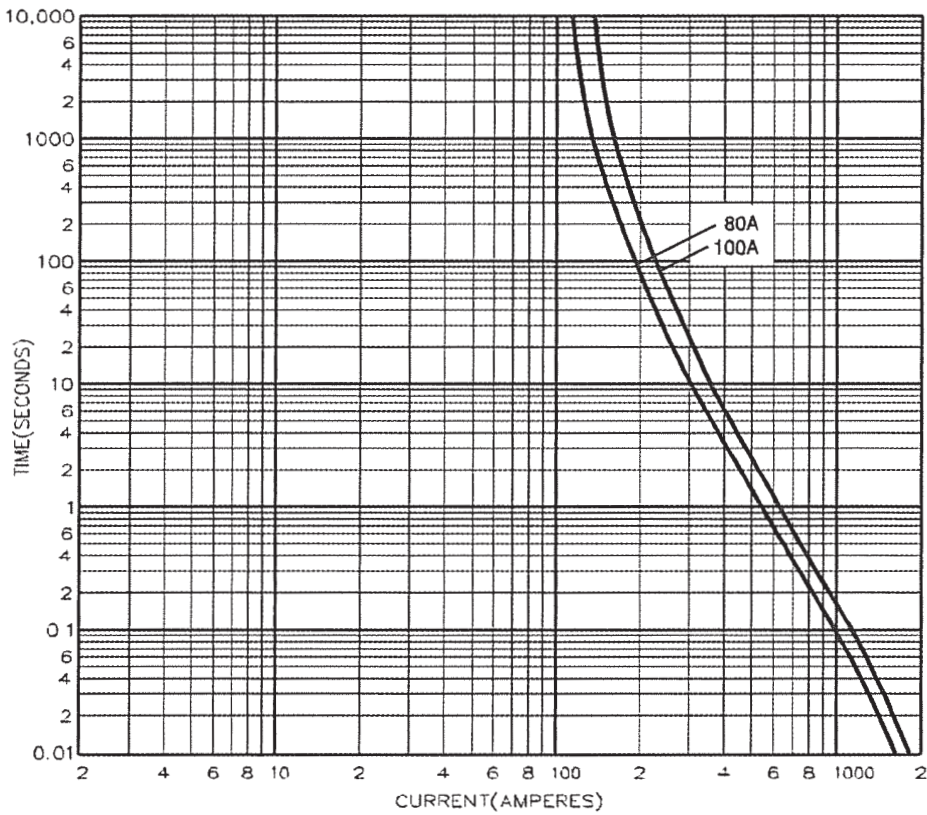
Part number	Rated voltage	Rated current (Amps)	Energy integrals I <sup>2</sup> t (A <sup>2</sup> S)		Watts loss W	Product class	Weight
			Pre-arcing	Total at 415V			
OSD80	500 V a.c.	80	13,000	35000	7.2	gG	55g
OSD100	500 V a.c.	100	25,000	76,500	8.5	gG	55g
OSD100M125	415 V a.c.	100M125	57,000	150,000	6.5	gM	80g
OSD100M160	415 V a.c.	100M160	72,500	190,000	5	gM	80g

**Dimensions - mm**

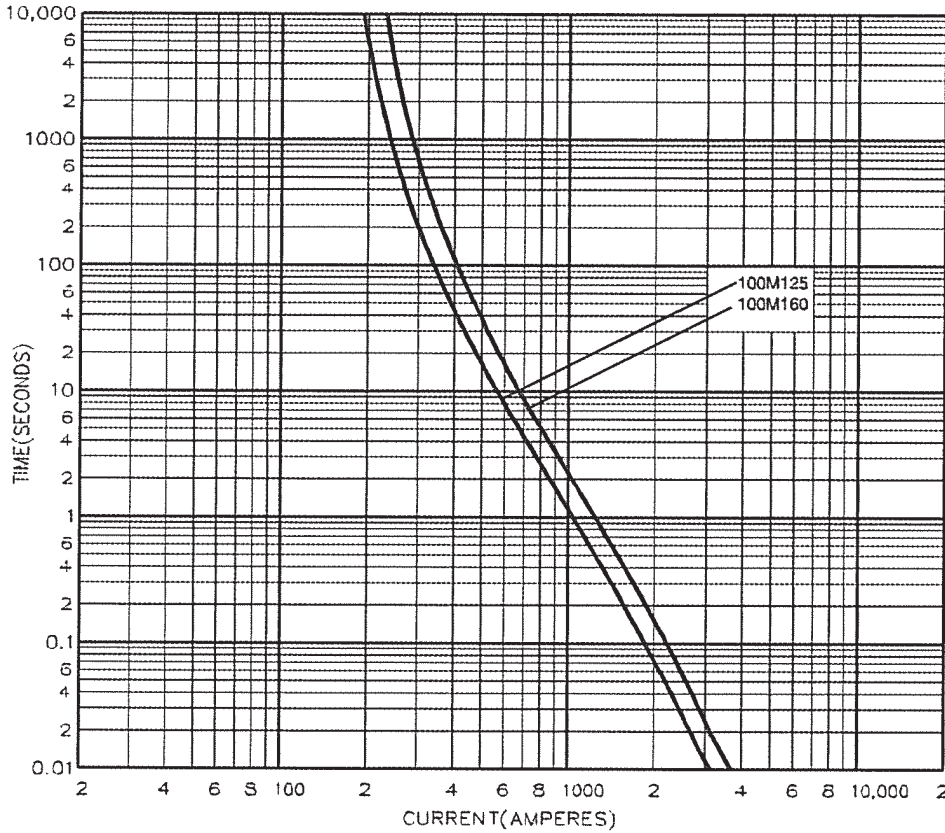


Catalogue numbers	A	B	C	D	E	F	G	H
OSD80-100	95	73	54.5	12.7	7.8	5.5	22.3	21
OSD100M125-160	94.5	73	54	12.7	7.8	5.5	24.7	25.7

Time current curve - OSD80 and OSD100



**Time current curve - OSD100M**



Changes to the products, to the information contained in this document, and to prices are reserved; so are errors and omissions. Only order confirmations and technical documentation by Eaton is binding. Photos and pictures also do not warrant a specific layout or functionality. Their use in whatever form is subject to prior approval by Eaton. The same applies to Trademarks (especially Eaton, Moeller, and Cutler-Hammer). The Terms and Conditions of Eaton apply, as referenced on Eaton Internet pages and Eaton order confirmations.

**Eaton**  
 EMEA Headquarters  
 Route de la Longeraie 7  
 1110 Morges, Switzerland  
 Eaton.eu

© 2015 Eaton  
 All Rights Reserved  
 Publication No. 4107  
 July 2015



Eaton is a registered trademark.

All other trademarks are property of their respective owners.

**CHS Controls AB**  
 Tel +46 42 38 61 00, Fax +46 42 38 61 29  
 chs@chscontrols.se www.chscontrols.se