
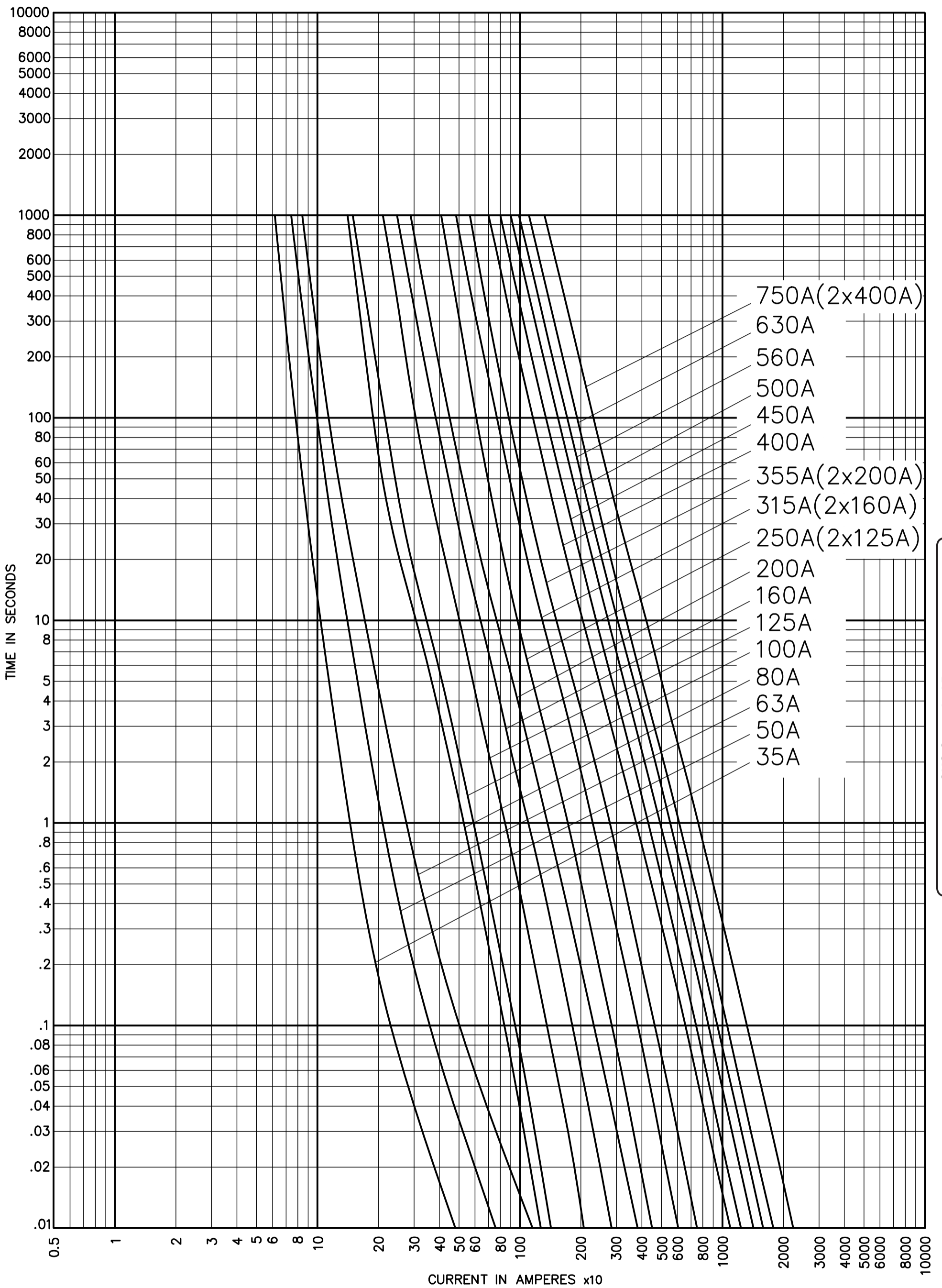


CHS Controls AB
 Tel +46 42 38 61 00, Fax +46 42 38 61 29
 chs@chscontrols.se www.chscontrols.se



| | | | |
|---|--|--|-----------------------------|
|  <i>Powering Business Worldwide</i> | MINIMUM MELTING TIME CURRENT CHARACTERISTIC CURVES | | Rev B Redrawn in CAD |
| | FOR FUSE TYPES TAC IN FREE AIR | | Date 16-02-2018 |
| | Tests made at 10 - 240 Volts A-C at p-f @ 25C with no initial load | | No. FGD117/TAC |
| | Standards used as basis for data BS2692 | | |
| | MINIMUM TEST POINTS PLOTTED SO VARIANTS SHOULD BE UP TO +20% | | Date 10-12-1987 |



CHS Controls AB
 Tel +46 42 38 61 00, Fax +46 42 38 61 29
 chs@chscontrols.se www.chscontrols.se



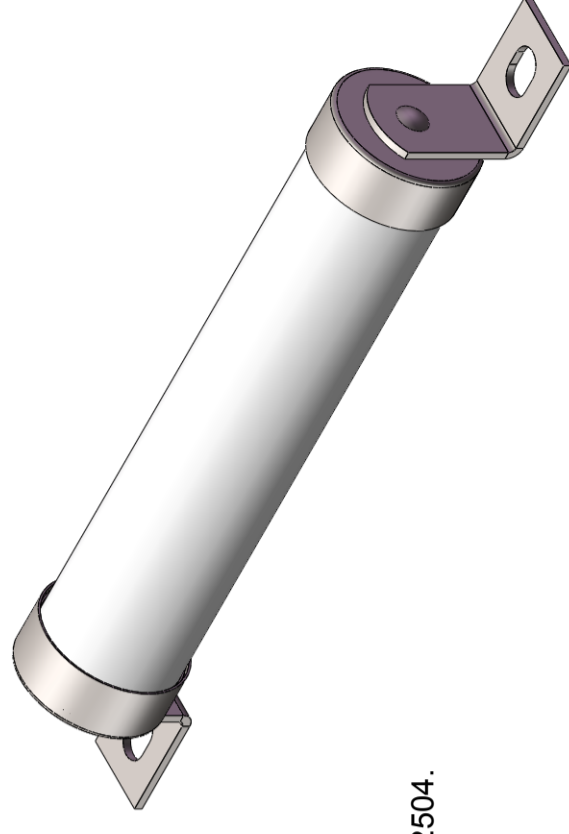
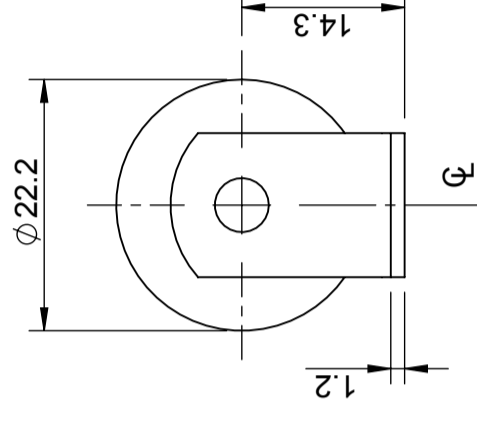
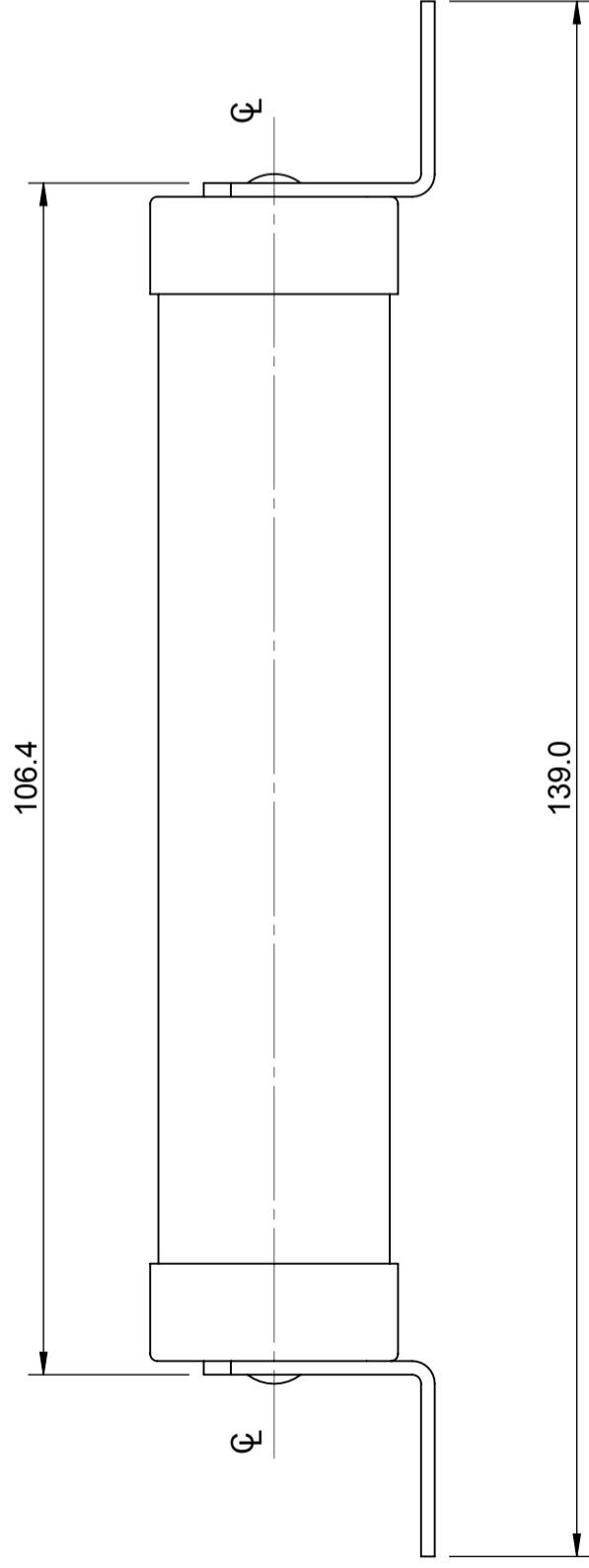
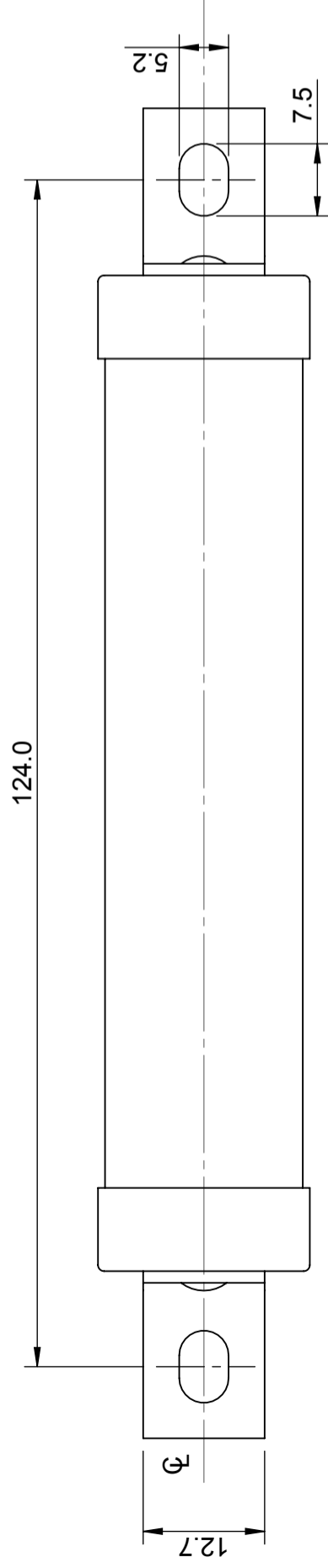

| | | |
|---|--------------|--------------------------------|
| MINIMUM MELTING TIME CURRENT CHARACTERISTIC CURVES | | |
| FOR FUSE TYPES TSC,TFC&TLC IN FREE AIR | | |
| Tests made at 10-240 | Volts A-C at | p-f @ 25C with no initial load |
| Standards used as basis for data BS2692 | | |
| MINIMUM TEST POINTS PLOTTED SO VARIANTS SHOULD BE UPTO +20% | | |

| | | |
|-----------------|------------|----------------|
| Rev | B | Redrawn in CAD |
| Date | 19-02-2018 | |
| No. FGD119/T-C | | |
| Date 14-12-1987 | | |

ITEM No. TAC---

REVISION

| REV | DESCRIPTION | BY | DATE | CHANGE NO. |
|-----|-------------------------------------|-----|------------|------------|
| B | DRAWING UPDATED WITH EATON TEMPLATE | JVM | 07/12/2016 | BUEI4519 |



NOTE :

- FOR TAG ALIGNMENT TOLERANCE REF SPEC. 5782504.

| SL . No | ITEM No |
|---------|---------|
| 1 | TAC2 |
| 2 | TAC4 |
| 3 | TAC6 |
| 4 | TAC10 |
| 5 | TAC16 |
| 6 | TAC20 |
| 7 | TAC25 |
| 8 | TAC32 |

CHS Controls AB
 Tel +46 42 38 61 00, Fax +46 42 38 61 29
 chs@chscontrols.se www.chscontrols.se

| | | | |
|--|-------------------|--|-----------------|
| <small>UNLESS OTHERWISE SPECIFIED, ALL DIMENSIONS ARE IN MILLIMETERS.</small> TOLERANCES UNLESS OTHERWISE SPECIFIED: GENERAL ± 0.4mm ANGULAR ± 1° | | TITLE OUTLINE FOR 'TAC' FUSELINKS (2 - 32 AMP) | |
| UNCONTROLLED COPY | DRAWN BY: RAG | DATE: 20/06/2012 | SCALE: NTS |
| THIS DRAWING IS CONFIDENTIAL AND THE COPYRIGHT OF EATON AND MUST NOT BE COPIED OR PASSED ON TO A THIRD PARTY WITHOUT WRITTEN CONSENT | MATERIAL: VARIOUS | ANGLE: THIRD | FINISH: NONE |
| MODEL VERSION: 00 | 1000001975 | DWG NO: 1000001975 | SHEET: B 1 OF 1 |

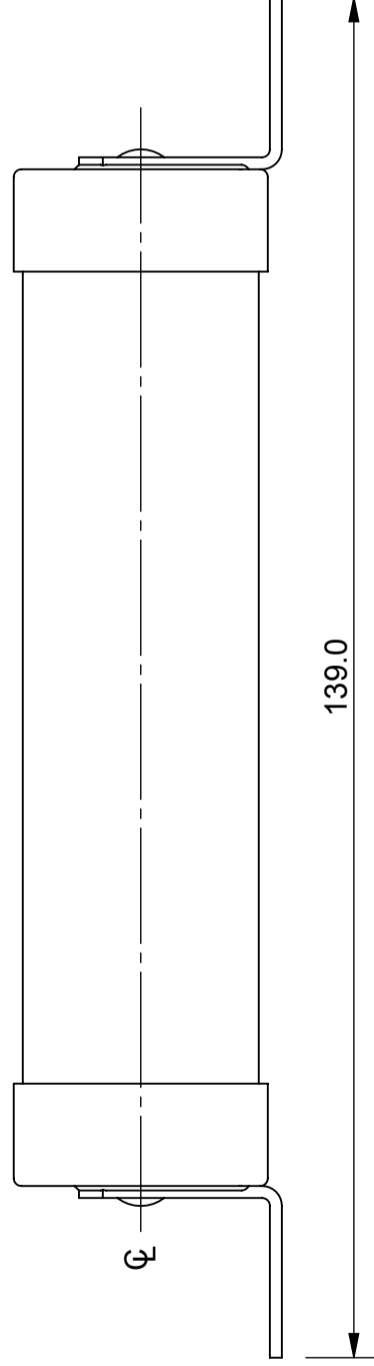
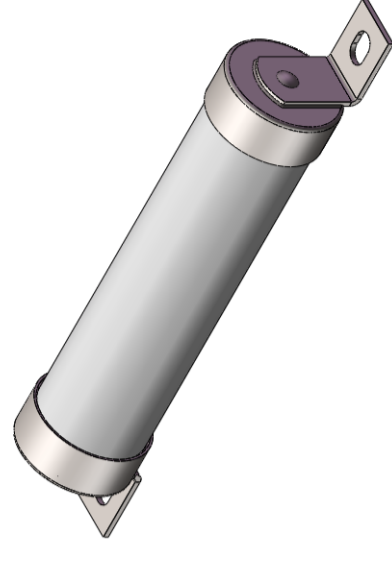
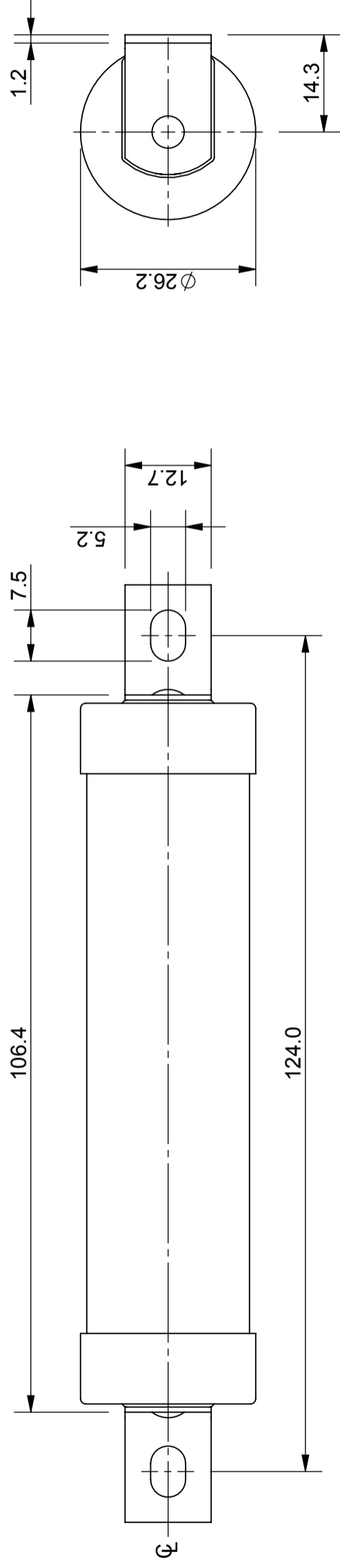


EATON
 Burton-on-the-Wolds,
 Leics, LE12 5TH
 Tel +44 1509 882 600

ITEM No. TSC--

REVISION

| REV | DESCRIPTION | BY | DATE | CHANGE NO. |
|-----|-------------------------------------|-----|------------|------------|
| B | DRAWING UPDATED WITH EATON TEMPLATE | JVM | 08/12/2016 | BUEI4519 |



NOTE :

- FOR TAG ALIGNMENT TOLERANCE REF SPEC. 5782504.

| SI. No | ITEM No. |
|--------|----------|
| 1 | TSC35 |
| 2 | TSC50 |
| 3 | TSC63 |



CHS Controls AB
 Tel +46 42 38 61 00, Fax +46 42 38 61 29
 chs@chscontrols.se www.chscontrols.se

| | | | | | | | | | | | | | |
|---|--|--|--|--|--|---|--|-------------------|--|----------------------|--|-----------------|--|
| UNLESS OTHERWISE SPECIFIED, ALL DIMENSIONS ARE IN MILLIMETERS. TOLERANCES UNLESS OTHERWISE SPECIFIED: GENERAL ± 0.4mm ANGULAR ± 1° | | TITLE OUTLINE FOR 'TSC' FUSELINKS (35- 63 AMP) | | DRAWN BY: SR | | DATE: 04/06/2012 | | SCALE: NTS | | ANGLE: THIRD | | SIZE: A3 | |
| UNCONTROLLED COPY | | MATERIAL: VARIOUS | | FINISH: NONE | | DWG NO: 1000002012 | | REV: B | | SHEET: 1 OF 1 | | | |
| THIS DRAWING IS CONFIDENTIAL AND THE COPYRIGHT OF EATON AND MUST NOT BE COPIED OR PASSED ON TO A THIRD PARTY WITHOUT WRITTEN CONSENT | | EATON Powering Business Worldwide | | EATON Burton-on-the-Wolds, Leics, LE12 5TH Tel +44 1509 882 600 | | MODEL SOURCE FILE: 1000002012 | | EATON logo | | EATON logo | | | |