

$K_b = 1$   $N = 1,6$



High Speed Fuse :

1000Vdc

aR Size 2BKN/75

Standards:

IEC 60269-4  
UL 248-13

Eaton Electrical Products Limited,  
Melton Road, Burton-on-the-Wolds,  
Leics, LE12 5TH  
Tel +44 1509 882 600  
WWW.EATON.COM

Rev :	B
Rev date:	08.05.2023
By:	AB
ECN No :	BUEH3434

Type: TYPOWER SILCU  
STANDARD RATINGS

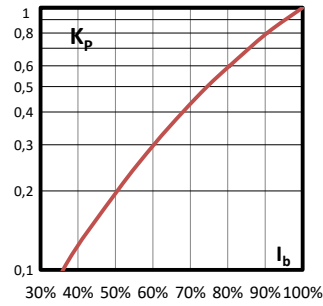
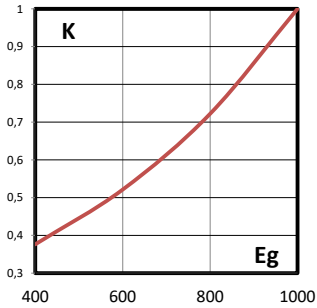
**180K0014**



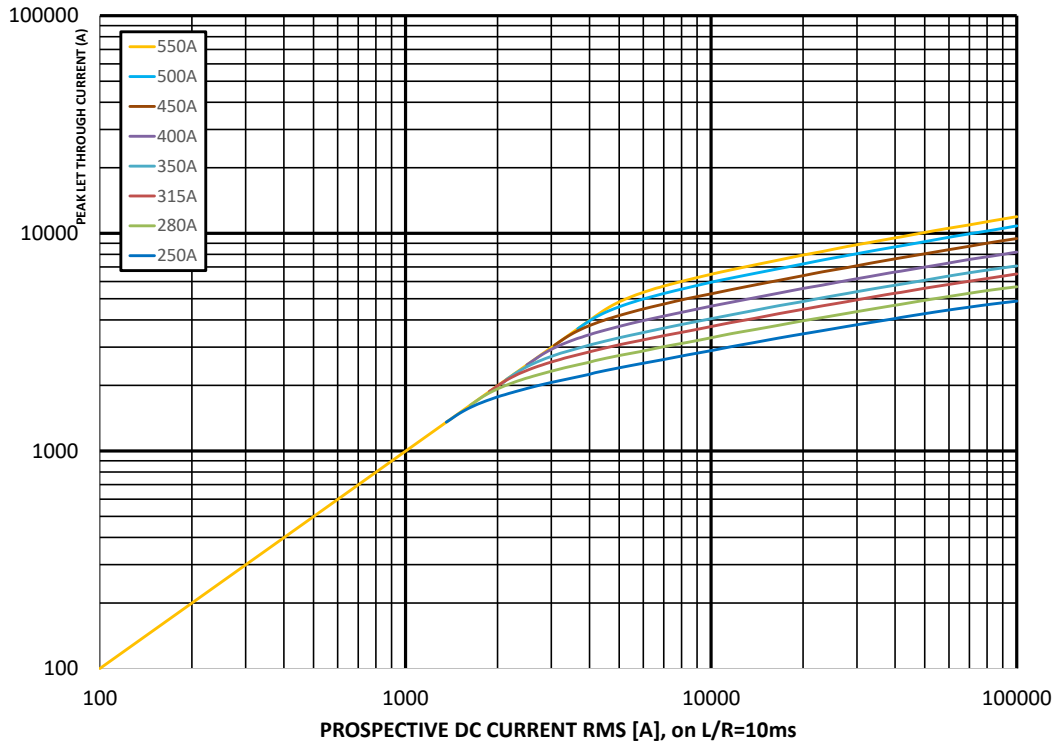
CHS Controls AB  
Tel +46 42 38 61 00, Fax +46 42 38 61 29  
chs@chscontrols.se www.chscontrols.se

Rated current RMS-value (A)	Minimum Pre-arcing integral (from cold) A <sup>2</sup> s	Maximum Clearing Integral A <sup>2</sup> s @ 1000Vdc 10ms L/R	Minimum Breaking Current (A) @ 1000VDC	Losses at rated current (W)
250	6500	35000	1750	65
280	9350	48000	2100	70
315	13000	67000	2500	75
350	16500	85000	2800	80
400	23000	118000	3400	85
450	34000	175000	3900	90
500	48000	245000	4700	95
550	62000	316000	5400	100

Eg [V] RMS value of working voltage in V  
 K Correction factor for max operating I<sup>2</sup>t  
 Kp Correction factor for Watt losses  
 I<sub>b</sub> RMS value of load current in % of rated current



### Peak Let-Through Current



High Speed Fuse :

1000Vdc

aR Size 2BKN/75

Rev : B  
Rev date: 08.05.2023

Standards:

IEC 60269-4  
UL 248-13

Eaton Electrical Products Limited,  
Melton Road, Burton-on-the-Wolds,  
Leics, LE12 5TH  
Tel +44 1509 882 600  
WWW.EATON.COM

By: AB  
ECN No : BUEH3434

Type: TYPower SILCU  
STANDARD RATINGS

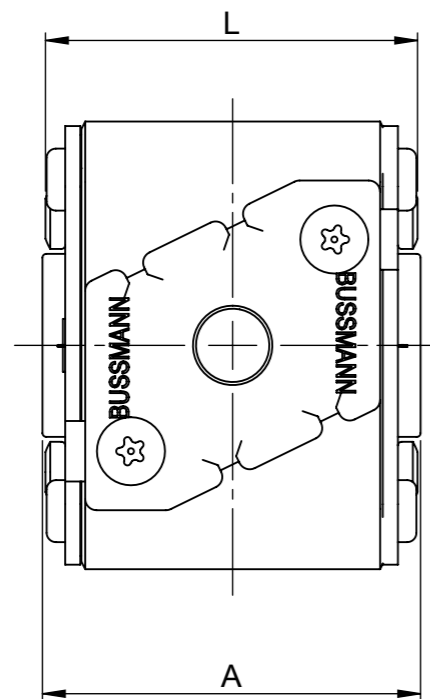
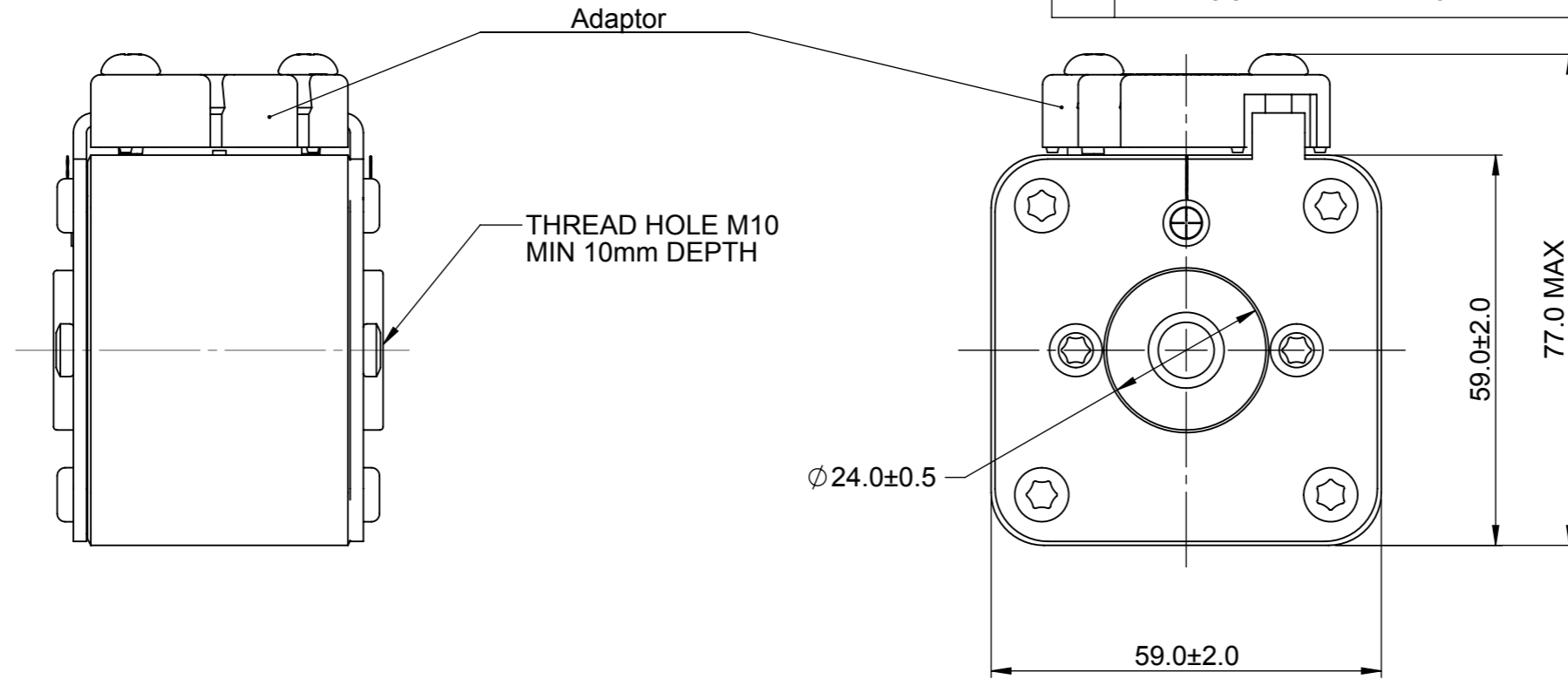
**180K0015**



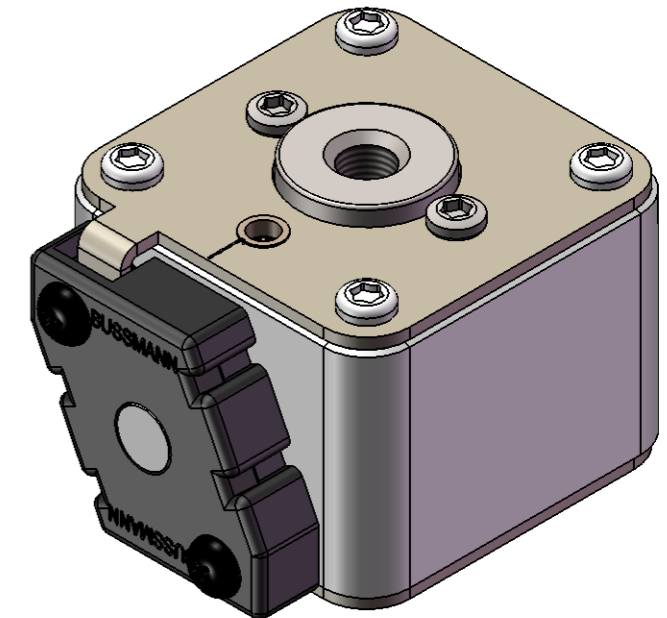
CHS Controls AB  
Tel +46 42 38 61 00, Fax +46 42 38 61 29  
chs@chscontrols.se www.chscontrols.se

REVISION

REV	DESCRIPTION	BY	DATE	CHANGE NO.
D	DRAWING UPDATED WITH EATON TEMPLATE	KVS	28/11/2016	BUEI4519



POS	TYPE	A mm	L mm	SUITABLE ADAPTOR
1	2BKN / 50	50.3 ± 1.2	49.5 ± 1.0	170H0066
2	2BKN / 75	74.3 ± 1.4	73.5 ± 1.2	170H0066
3	2BKN / 80	80.3 ± 1.5	79.5 ± 1.3	170H0067
4	2BKN / 105	104.3 ± 1.5	79.5 ± 1.3	170H0067
5	2BKN / 65	65.3 ± 1.3	49.5 ± 1.0	170H0066
6	2BKN / 90	91.3 ± 1.5	79.5 ± 1.3	170H0067



**CHS Controls AB**

Tel +46 42 38 61 00, Fax +46 42 38 61 29  
chs@chscontrols.se www.chscontrols.se

MODEL SOURCE FILE: U0108	UNLESS OTHERWISE SPECIFIED, ALL DIMENSIONS ARE IN MILLIMETERS.  TOLERANCES UNLESS OTHERWISE SPECIFIED: GENERAL ± 0.2mm ANGULAR ± 1°	TITLE <b>HIGH SPEED FUSES SIZES 2 FOR STUDS</b>				 Powering Business Worldwide	
	UNCONTROLLED COPY	DRAWN BY: <b>KVS</b>	DATE: <b>06/04/09</b>	SCALE: <b>NTS</b>	ANGLE: <b>FIRST</b>		SIZE: <b>A3</b>
	THIS DRAWING IS CONFIDENTIAL AND THE COPYRIGHT OF EATON AND MUST NOT BE COPIED OR PASSED ON TO A THIRD PARTY WITHOUT WRITTEN CONSENT	MATERIAL: <b>VARIOUS</b>		FINISH: <b>NONE</b>			DWG NO: <b>170x0077</b>
EATON Burton-on-the-Wolds, Leics, LE12 5TH Tel +44 1509 882 600						REV: <b>D</b> SHEET: <b>1 OF 1</b>	