



3-pole EMERGENCY STOP



3-pole

Technical data

Ex-safety switches 10 A

Marking accd. to 2014/34/EU	Ⓔ II 2 G Ex eb db IIC T6 Gb / Ⓔ II 2 D Ex tb IIIC T80°C Db	
EC-Type Examination Certificate	BVS 16 ATEX E 079	
IECEX Certificate of Conformity	IECEX BVS 16.0045	
Marking accd. to IECEx	Ex eb db IIC T6 Gb / Ex tb IIIC T80°C Db	
Permissible ambient temperature	-20 °C up to +40 °C ¹⁾	
Rated voltage	up to max. 500 V	
Rated current	max. 10 A	
Frequency	50/60 Hz	
Rated making-/ breaking capacity AC-3 accd. EN 60947-3	U _e 230 V / I _e 10 A U _e 400 V / I _e 10 A U _e 500 V / I _e 10 A	
Switch-disconnector for maintenance accd. to IEC 62262-1	Class 1	
Back-up fuse	up to 400 V AC: 20 A gG up to 500 V AC: 16 A gG	
Connecting terminals	main contact	2 x 1.5 - 2.5 mm ²
	auxiliary-/Signal contact	2 x 0.5 - 2.5 mm ² (option)
Degree of protection accd. to EN 60529	IP66	
Protection class	I	
Cable glands/enclosure drilling	M20 cable gland see ordering details M25 cable gland see ordering details	
Weight	0.55 kg	
Enclosure material	impact resistant polyamide	
Enclosure colour	black	
Auxiliary contact (option)	1 x NO making - lagging; breaking - leading	
Padlocking facility	can be locked in OFF position with 3 commercially available padlocks (Ø max. 6 mm)	

¹⁾ Other ambient temperatures on request

GHG 261 - Ex-safety switches 10 A



3-pole



3-pole EMERGENCY STOP

Ordering details

5

Content	Cable gland	Auxiliary contact	Order No.
Safety switch 10 A 3-pole			
3-pole	2 x M25 / 1 x M20	1 NO	GHG 261 0005 R0009
3-pole	2 x M25	none	GHG 261 0007 R0001
3-pole	2 x M20	1 NO	GHG 261 0005 R0005
3-pole EMERGENCY STOP	2 x M25 / 1 x M20	1 NO	GHG 261 0005 R0010
3-pole EMERGENCY STOP	2 x M25	none	GHG 261 0007 R0002
Safety switch 10 A 4-pole			
4-pole	2 x M25	none	GHG 261 0007 R0003

Customized version on request, auxiliary contacts in Ex ia available

Accessories

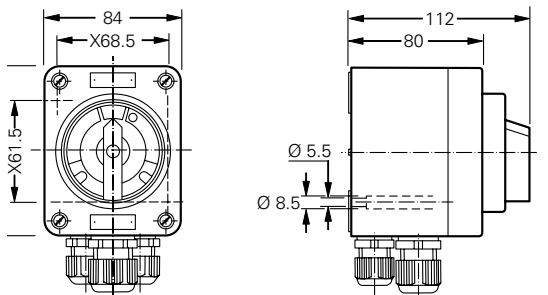
Type	Application	Fixing method	Order No.
Mounting plate for Ex-safety switches 10 A 3-pole			
Size 1	Wall mounting	screwless mounting	GHG 610 1953 R0101
Size 1	Pipe clamp	screwless mounting	GHG 610 1953 R0102
Size 1	Trellis-work mounting	screwless mounting	GHG 610 1953 R0103

Type	Application	OU	Order No.
Accessories for mounting plates			
Label holder with type label (blank) for mounting plate size 1, 2, 2A and 3		10	GHG 610 1953 R0057
Mounting set for pipes 1" (of 27 - 30 mm) for mounting plates with pipe fixing		10	GHG 610 1953 R0020

Type	Application	OU	Order No.
Canopies for mounting plates			
Size 1	for mounting plate size 1	1	GHG 610 1955 R0101

Please pay attention that only order units (OU) according to the ordering details can be delivered.

Dimension drawing



3-pole

X = fixing dimensions