
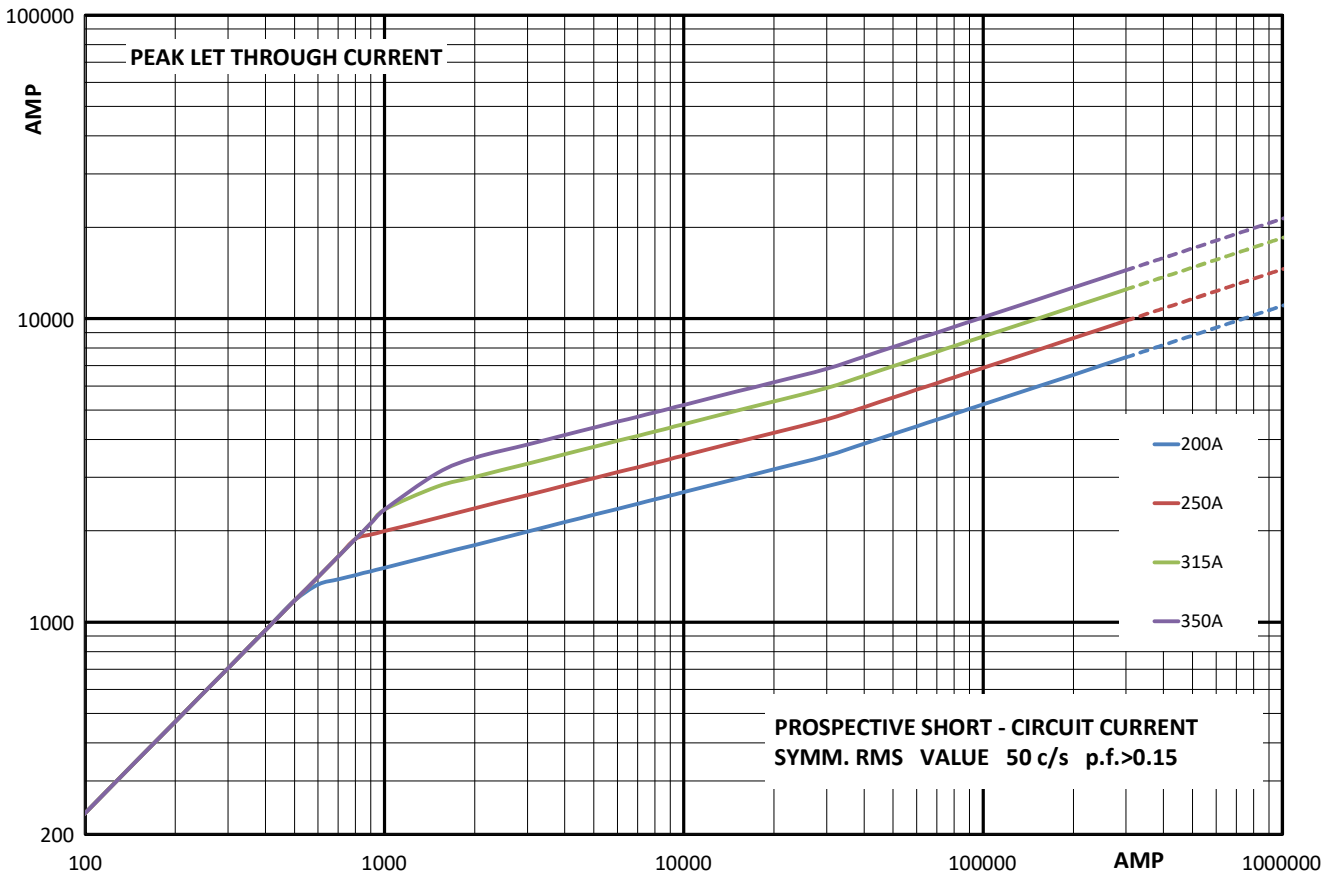
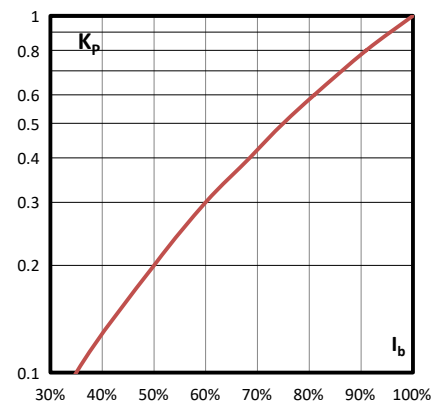
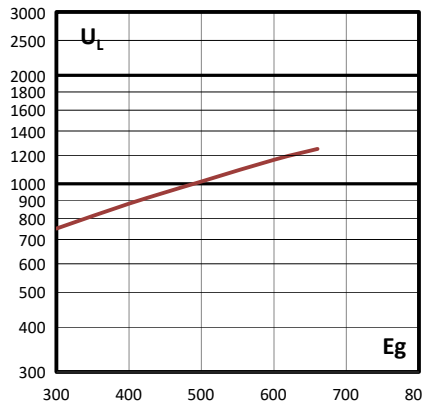
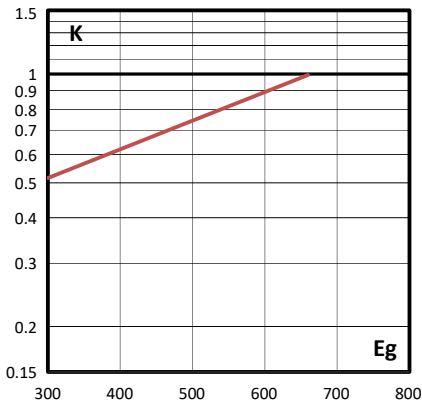


$K_b = 0.6$ $N = 1.5$

 Powering Business Worldwide	High Speed Fuse : Size 2 660V AC	Rev : D
	Type: TYPOWER ZILOX SPECIAL RATINGS	Rev date: 06-Apr-21
	Eaton Electrical Products Limited, Melton Road, Burton-on-the-Wolds, Leics, LE12 5TH Tel +44 1509 882 600 WWW.EATON.COM	By: CS
		ECN No : BUEB20169
		170K6358

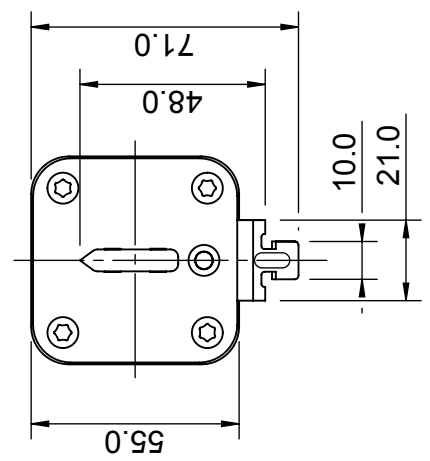
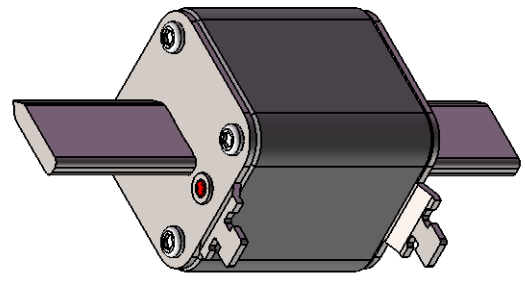
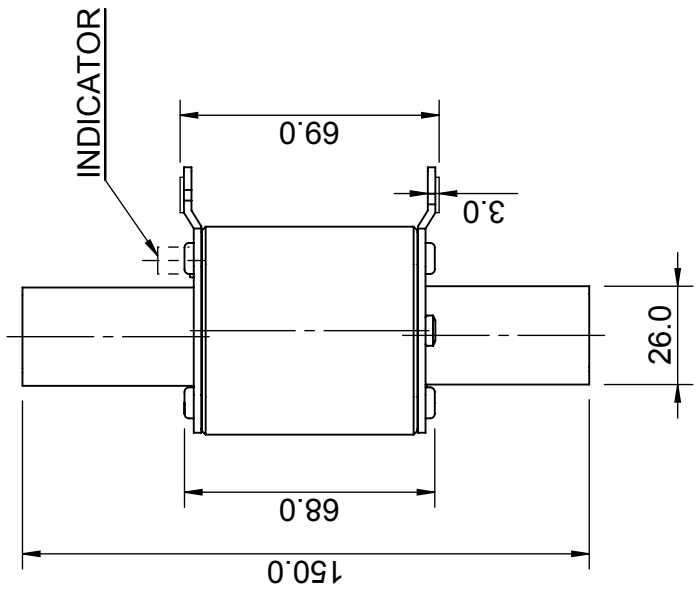
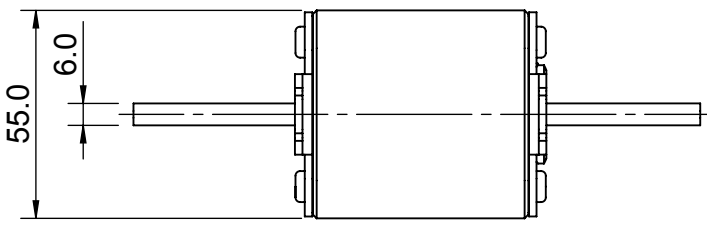
Rated current RMS-value A	Pre-arcing integral (from cold) A ² s	Max operating I ₂ t at: 660V a.c. A ² s	Losses at rated current W
200	1200	8250	49
250	2450	16500	54
315	4950	33000	61
350	7000	46500	64

E_g [V] RMS value of working voltage in V
 K Correction factor for max operating I²T
 K_p Correction factor for Watt losses
 I_b RMS value of load current in % of rated current
 U_L Max Arc Voltage in V



 Powering Business Worldwide	High Speed Fuse : Size 2 660V AC Type: TYPOWER ZILOX SPECIAL RATINGS	Rev : D Rev date: 06-Apr-21 By: CS ECN No : BUEB20169
	 CHS Controls AB Tel +46 42 38 61 00, Fax +46 42 38 61 29 chs@chscontrols.se www.chscontrols.se	Eaton Electrical Products Limited, Melton Road, Burton-on-the-Wolds, Leics, LE12 5TH Tel +44 1509 882 600 WWW.EATON.COM

REV	DESCRIPTION	BY	DATE	CHANGE NO.
C	DRAWING UPDATED WITH EATON TEMPLATE	DJR	11/01/2017	BUEI4519



CHS Controls AB
 Tel +46 42 38 61 00, Fax +46 42 38 61 29
 chs@chscontrols.se www.chscontrols.se

UNLESS OTHERWISE SPECIFIED, ALL DIMENSIONS ARE IN MILLIMETERS. TOLERANCES UNLESS OTHERWISE SPECIFIED: GENERAL $\pm 0.2\text{mm}$ ANGULAR $\pm 1^\circ$		TITLE HRC CARTRIDGE FUSE LINK SIZE 2 to DIN 43620		EATON Powering Business Worldwide	
MODEL VERSION: U004 01	UNCONTROLLED COPY	DRAWN BY: KVS	DATE: 09/06/09	SCALE: NTS	ANGLE: FIRST
THIS DRAWING IS CONFIDENTIAL AND THE COPYRIGHT OF EATON AND MUST NOT BE COPIED OR PASSED ON TO A THIRD PARTY WITHOUT WRITTEN CONSENT		MATERIAL: VARIOUS		FINISH: NONE	
MODEL SOURCE FILE: U004		DWG NO: 171X0004		REV: C SHEET: 1 OF 1	