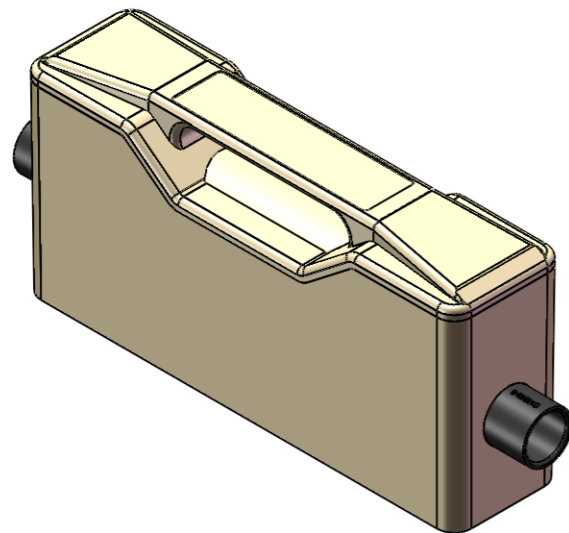
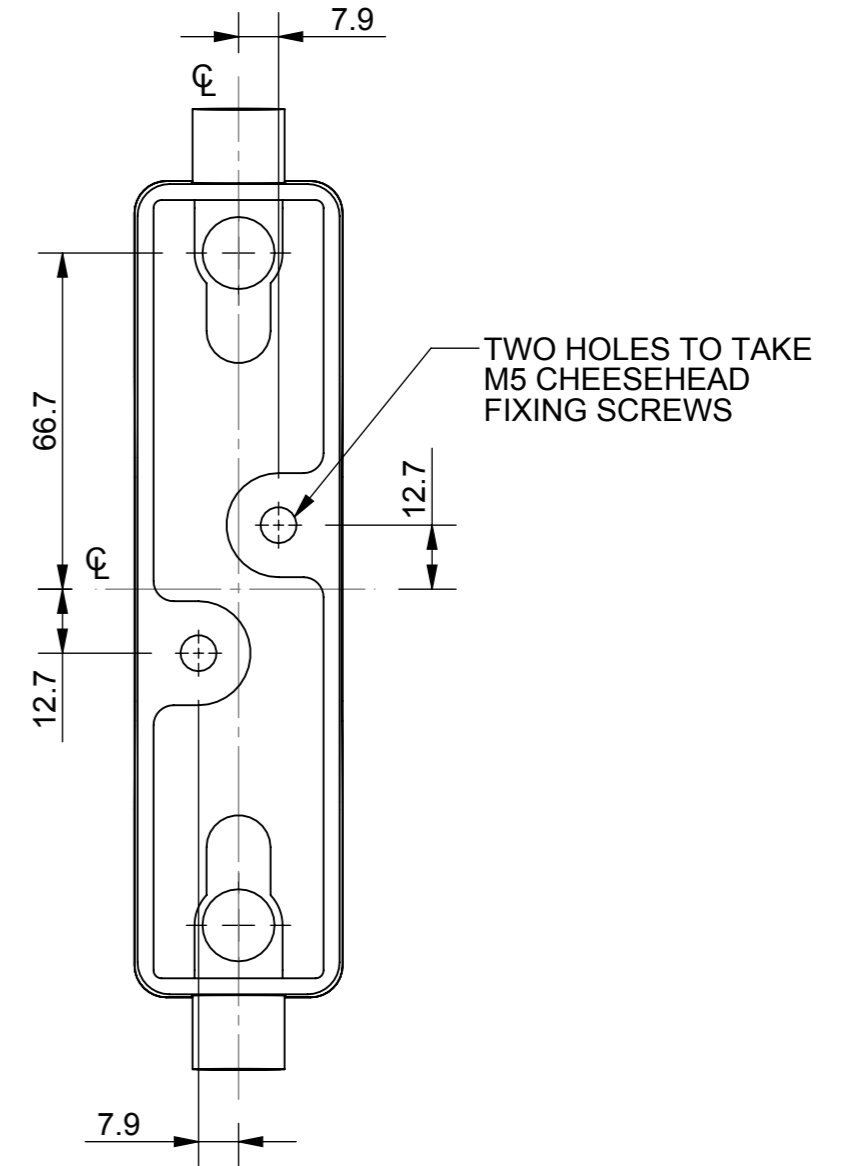
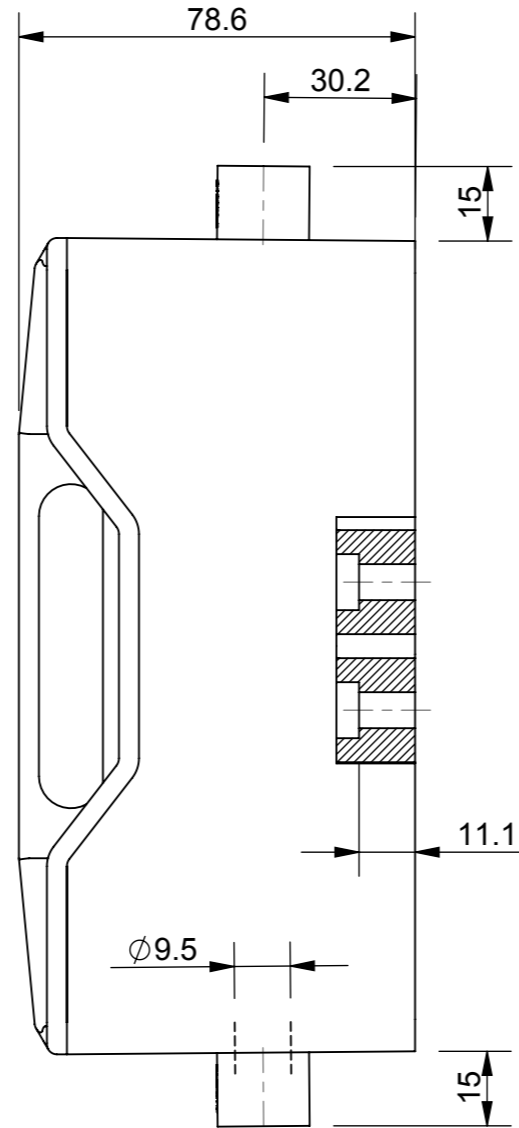
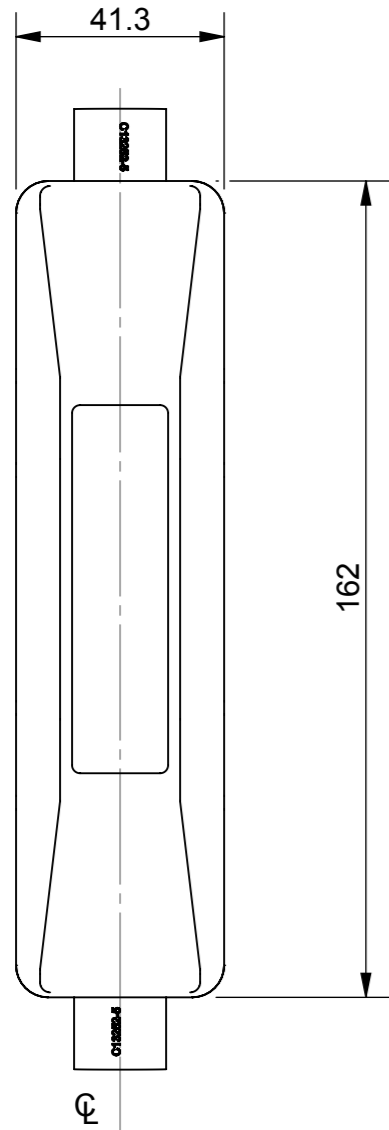


ITEM No : RSL63H

REVISION

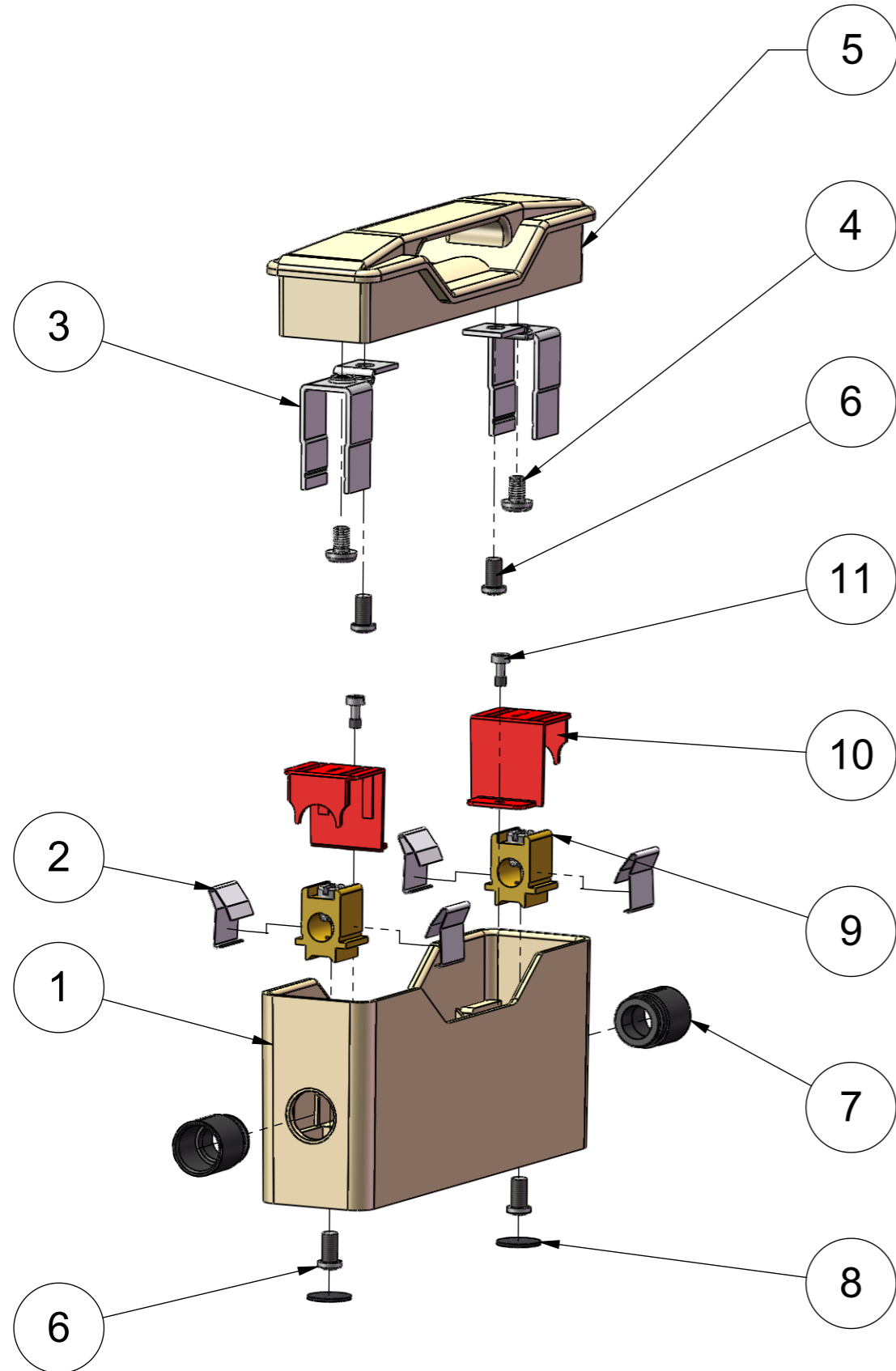
REV	DESCRIPTION	BY	DATE	CHANGE NO.
E	Table amended in line with SAP BOM	JVM	18/02/2015	BUEH10 90



CHS Controls AB
 Tel +46 42 38 61 00, Fax +46 42 38 61 29
 chs@chscontrols.se www.chscontrols.se

MODEL VERSION: 03 MODEL SOURCE FILE: 1000001912	MATERIAL:	VARIOUS	UNLESS OTHERWISE SPECIFIED, ALL DIMENSIONS ARE IN MILLIMETERS. TOLERANCES UNLESS OTHERWISE SPECIFIED: GENERAL ± 0.4mm ANGULAR ± 1°	EATON Cooper Bussmann (UK) Ltd. Burton-on-the-Wolds Leics, UK, LE12 5TH Tel +44 1509 882 600 Fax +44 1509 882 786
	FINISH:	NONE		
	SURFACE AREA:	VARIOUSmm ²		
	VOLUME:	226052.53mm ³		
	MASS:	7930.58g	UNCONTROLLED COPY THIS DRAWING IS CONFIDENTIAL AND THE COPYRIGHT OF COOPER BUSSMANN AND MUST NOT BE COPIED OR PASSED ON TO A THIRD PARTY WITHOUT WRITTEN CONSENT	TITLE: 1000V GE FUSEHOLDER FRONT WIRE
				DWG NO: 1000001912 ANGLE: THIRD REV: E
				DRAWN BY: RAG CHECKED BY: JM/NS DATE: 14/05/2012 SCALE: NTS SIZE: A3 SHEET: 1 OF 2


ITEM No : RSL63H



REVISION				
REV	DESCRIPTION	BY	DATE	CHANGE NO.
E	Table amended in line with SAP BOM	JVM	18/02/2015	BUEH1090

ITEM NO.	PART NUMBER	TITLE	QTY.
1	H26C3011W	MOULDED BASE FOR RSL 63 FITTING	1
2	C13252-20	STEEL STIRRUP 63 AMP	4
3	H21D3011	HANDLE CONTACT OF RSL63 P & PH FUSE FITTINGS	2
4	MS21-05-008-Z	M5 x 8 SCREW PAN HD	2
5	H26C3010W	MOULDED HANDLE FOR RSL 63 FITTING	1
6	H20D2008	SPECIAL SCREW M5 (M4 PAN HEAD)	4
7	C13252-5	RS60 MOULDED BUSH	2
8	C11405-13	DISC FABRIC BLACK	2
9	1000002310	BLOCK SCREW ASSEMBLY	2
10	C13252-3	RS63 MOULDED SHROUD	2
11	V2465	RS15 FUSE FITTING.	2

NOTE:- FOR ITEM 8 USE ASSEMBLY 1000002314 AND REMOVE SELF TAPPING SCREW

MODEL VERSION: 03 MODEL SOURCE FILE: 1000001912	MATERIAL:	VARIOUS	UNLESS OTHERWISE SPECIFIED, ALL DIMENSIONS ARE IN MILLIMETERS.		 Cooper Bussmann (UK) Ltd Burton-on-the-Wolds, Leics, LE12 5TH Tel +44 1509 882 600 Fax +44 1509 882786								
	FINISH:	NONE	TOLERANCES UNLESS OTHERWISE SPECIFIED: GENERAL ± 0.4mm ANGULAR ± 1°										
	SURFACE AREA:	VARIOUSmm ²	UNCONTROLLED COPY		TITLE:								
	VOLUME:	226052.53mm ³	THIS DRAWING IS CONFIDENTIAL AND THE COPYRIGHT OF COOPER BUSSMANN AND MUST NOT BE COPIED OR PASSED ON TO A THIRD PARTY WITHOUT WRITTEN CONSENT		1000V GE FUSEHOLDER FRONT WIRE								
MASS:	7930.58g			DWG NO:	1000001912	ANGLE:	THIRD	REV:	E				
		DRAWN BY:	RAG	CHECKED BY:	JM/NS	DATE:	14/05/2012	SCALE:	NTS	SIZE:	A3	SHEET:	2 OF 2