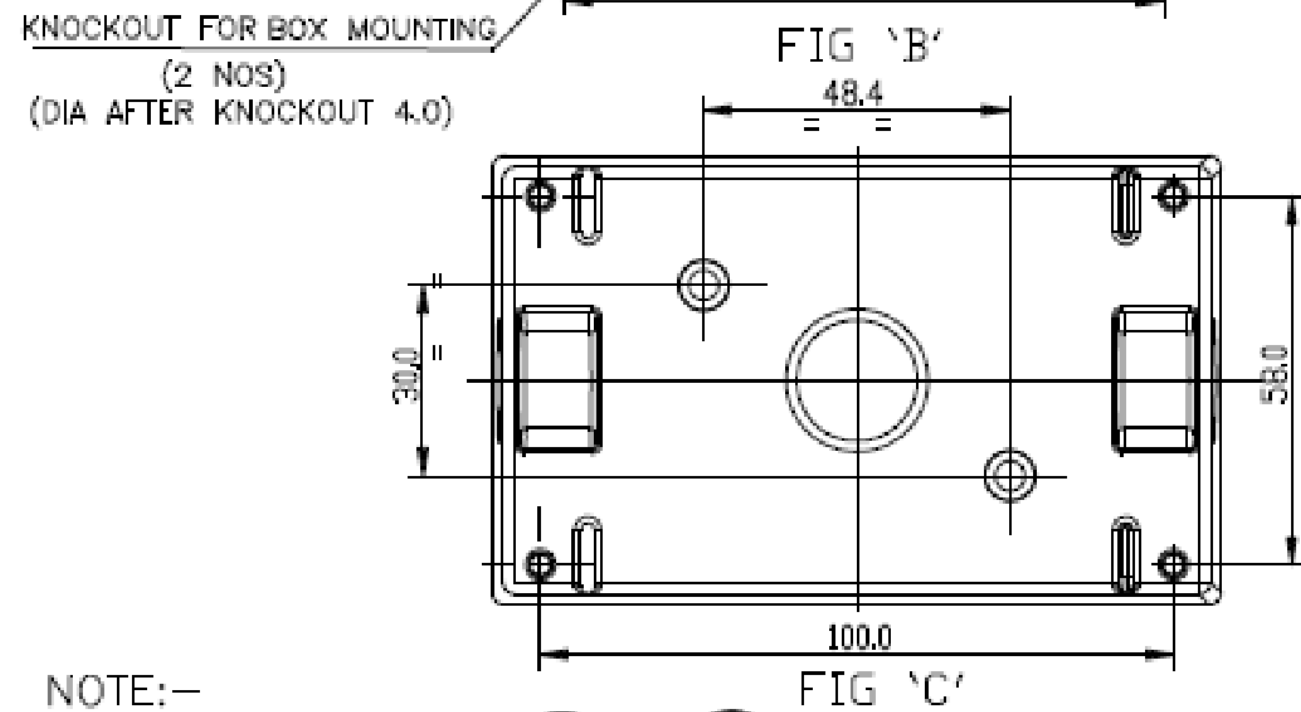
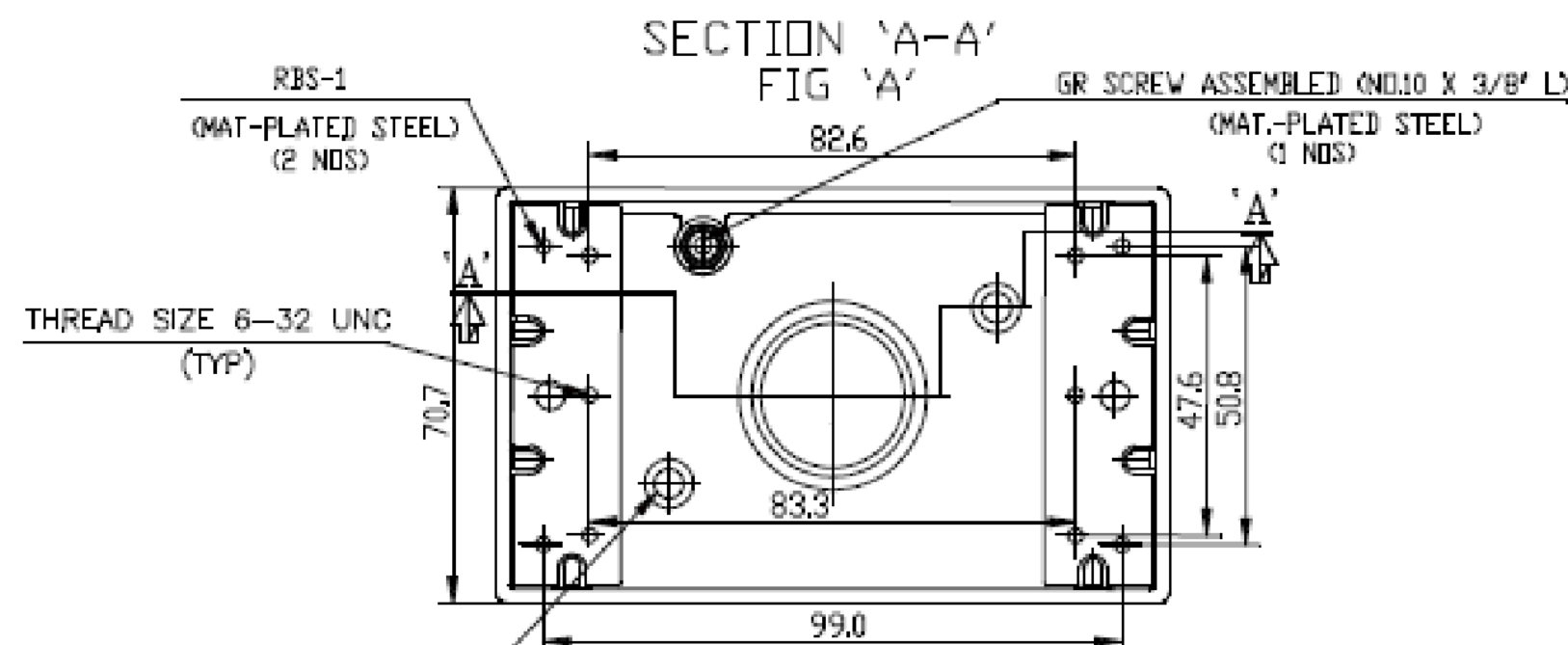
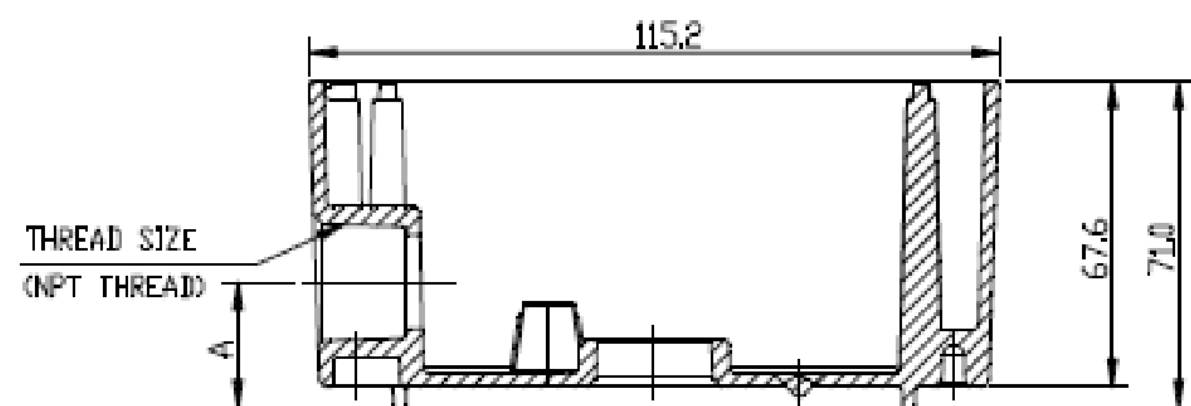


ZONE	NO.	DESCRIPTION	DATE	APPRD.	LTR. NO.
	1	SUBMIT FOR RELEASE	5/7/2020	PW	

SINGLE GANG DP WP BOX

		MIN. VOLUME (CU.IN.)	A
TP7074	1/2" 3HL - GRY	25.5	26.0
TP7075	1/2" 3HL - WHT	25.5	26.0
TP7076	1/2" 3HL - AR BZ	25.5	26.0
TP7078	3/4" 3HL - GRY	25.5	26.0
TP7082	1" 3HL - GRY	23.0	26.0



NOTE:-

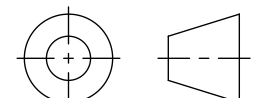
ACCESSORIES:

SR.NO.	DESCRIPTION	QTY
1	CLOSER PLUG	2
2	MOUNTING LUG (ML)	2
3	SCREW (CST-8-025)	2

DD
REV.

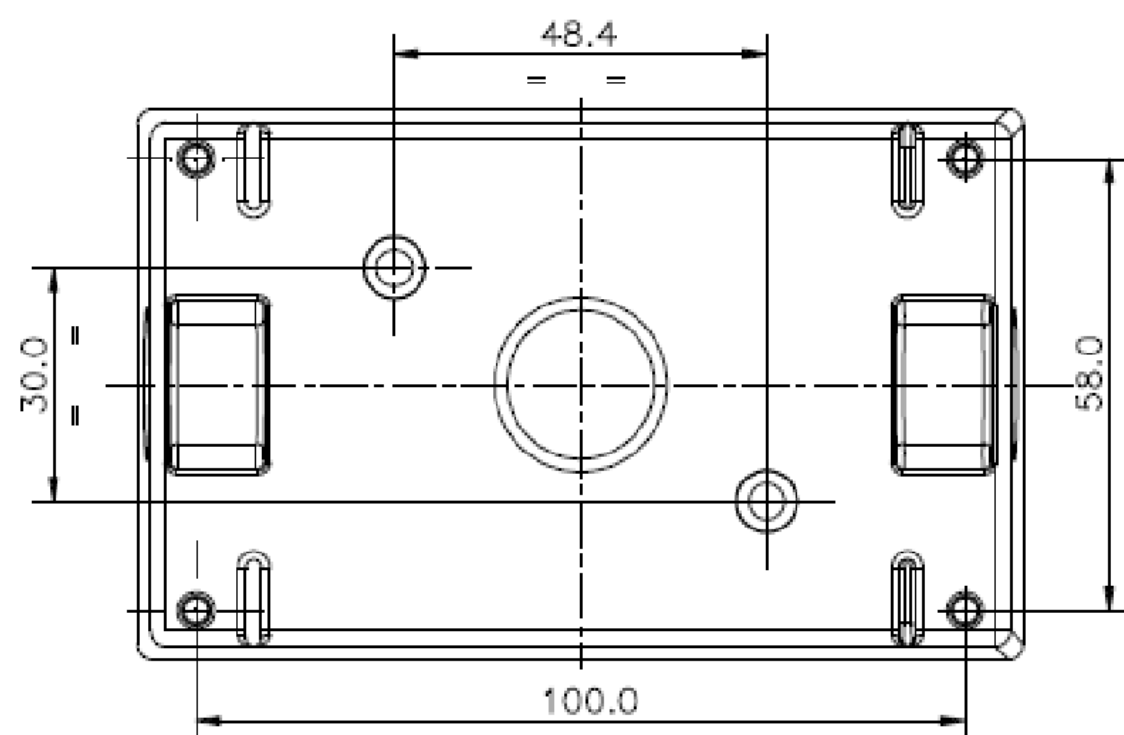
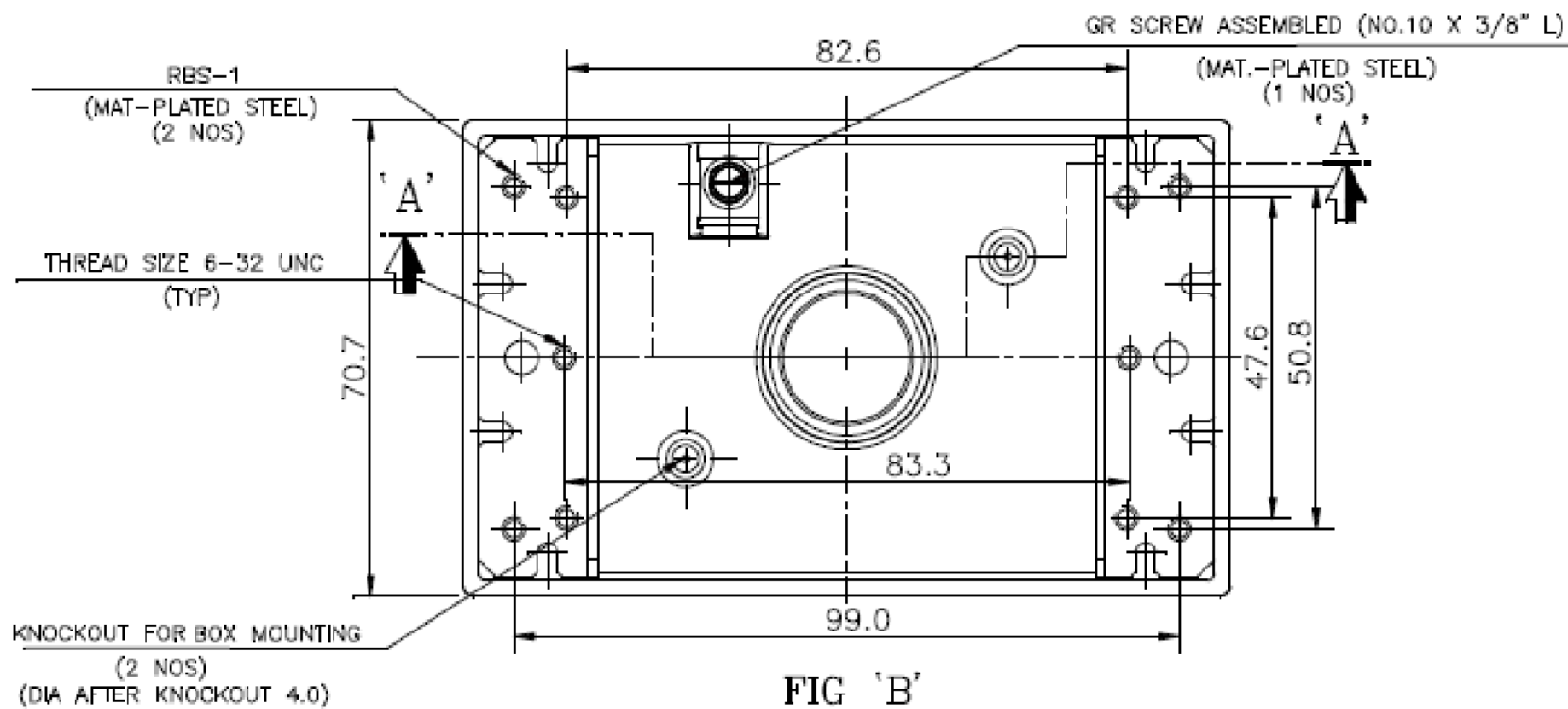
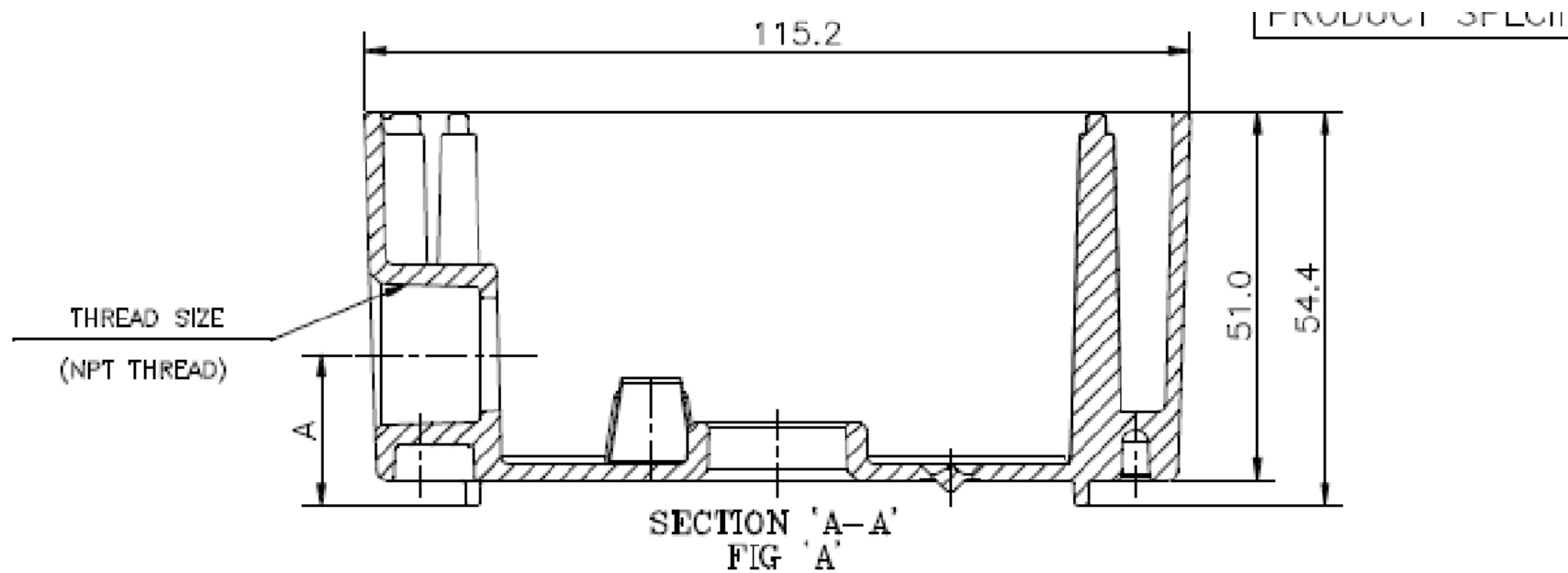
NOTES:

- CERTIFICATION/LISTING:  
- ENVIRONMENTAL RATING:
-WEATHERPROOF
-WET LOCATION

<p>THIS IS PROPERTY OF EATON AND CONTAINS CONFIDENTIAL AND TRADE SECRET INFORMATION. POSSESSION DOES NOT CONVEY ANY RIGHTS TO LOAN, SELL OR DISCLOSE SAID INFORMATION. REPRODUCTION OR USE FOR ANY PURPOSE OTHER THAN WHICH IT WAS SUPPLIED MAY NOT BE MADE WITHOUT EXPRESS WRITTEN PERMISSION OF EATON. THIS DRAWING IS ON LOAN AND IS TO BE RETURNED UPON REQUEST.</p>	<p>TOLERANCES UNLESS OTHERWISE SPECIFIED</p> <table border="1"> <tr> <th></th> <th>in.</th> <th>mm</th> </tr> <tr> <td>.X</td> <td>± .1</td> <td>± .3</td> </tr> <tr> <td>.XX</td> <td>± .01</td> <td>± .13</td> </tr> <tr> <td>.XXX</td> <td>± .005</td> <td>± .000</td> </tr> <tr> <td>ANGLES</td> <td>± 1.5°</td> <td>± 1.5°</td> </tr> </table>			in.	mm	.X	± .1	± .3	.XX	± .01	± .13	.XXX	± .005	± .000	ANGLES	± 1.5°	± 1.5°	<p>UNLESS OTHERWISE SPECIFIED, ALL PRIMARY DIMENSIONS ARE IN INCHES. DIMENSIONS IN [] ARE IN MILLIMETERS.</p>		<p>EATON CROUSE-HINDS SERIES</p>	
		in.	mm																		
	.X	± .1	± .3																		
	.XX	± .01	± .13																		
.XXX	± .005	± .000																			
ANGLES	± 1.5°	± 1.5°																			
MATERIAL:	DIM AND TOL IN ACCORDANCE WITH ASME Y14.5 2009.	ORIGINAL DATE	05/4/2020	TITLE		1 GANG DP WP BOX															
FINISH:	THIRD ANGLE PROJECTION	REDRAWN DATE		DRAWN BY		TAK															
NEXT ASSY.	USED ON	CHECKED BY		APPROVED BY		APPROVED BY															
APPLICATION		APPROVED BY		SIZE	CODE IDENT. NO.	TP7	REV. 1														
				SCALE 1:1	WT.	SHEET 1 OF 1															

 **CHS Controls AB**
Tel +46 42 38 61 00, Fax +46 42 38 61 29
chs@chscontrols.se www.chscontrols.se

ZONE	NO.	DESCRIPTION	DATE	APPRD.	LTR. NO.
	1	SUBMIT FOR RELEASE	5/7/2020	PW	



SINGLE GANG WP OUTLET BOX


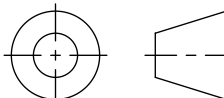
		MIN. VOLUME (CU.IN.)	A
TP7012	2 DP LUG 1/2" 3 HOLE - BRONZE	18.3	21.0
TP7010BULK	2 DP LUG 1/2" 3 HOLE - GRAY (BULK PACK)	18.3	21.0
TP7010	2 DP LUG 1/2" 3 HOLE - GRAY	18.3	21.0
TP7011	2 DP LUG 1/2" 3 HOLE - WHITE	18.3	21.0
TP7026	2 DP LUG 1/2" 4 HOLE - GRAY	17.0	21.0
TP7028	2 DP LUG 1/2" 4 HOLE - BRONZE	17.0	21.0
TP7027	2 DP LUG 1/2" 4 HOLE - WHITE	17.0	21.0
TP7042	2 DP LUG 1/2" 5 HOLE - GRAY	18.3	21.0
TP7018	2 DP LUG 3/4" 3 HOLE - GRAY	18.3	21.0
TP7019	2 DP LUG 3/4" 3 HOLE - WHITE	18.3	21.0
TP7020	2 DP LUG 3/4" 3 HOLE - BRONZE	18.3	21.0
TP7034	2 DP LUG 3/4" 4 HOLE - GRAY	18.3	21.0
TP7036	2 DP LUG 3/4" 4 HOLE - BRONZE	18.3	21.0
TP7035	2 DP LUG 3/4" 4 HOLE - WHITE	18.3	21.0
TP7050	2 DP LUG 3/4" 5 HOLE - GRAY	17.0	21.0

ACCESSORIES:

SR.No.	DESCRIPTION	QTY
1	CLOSURE PLUG	2
2	MOUNTING LUG	2
3	CST SCREW (No. 8 x 1/4"L)	2

NOTES:

- CERTIFICATION/LISTING:  
- ENVIRONMENTAL RATING:
-WEATHERPROOF
-WET LOCATION

<small>THIS IS PROPERTY OF EATON AND CONTAINS CONFIDENTIAL AND TRADE SECRET INFORMATION. POSSESSION DOES NOT CONVEY ANY RIGHTS TO LOAN, SELL OR DISCLOSE SAID INFORMATION. REPRODUCTION OR USE FOR ANY PURPOSE OTHER THAN WHICH IT WAS SUPPLIED MAY NOT BE MADE WITHOUT EXPRESS WRITTEN PERMISSION OF EATON. THIS DRAWING IS ON LOAN AND IS TO BE RETURNED UPON REQUEST.</small>		TOLERANCES UNLESS OTHERWISE SPECIFIED		UNLESS OTHERWISE SPECIFIED, ALL PRIMARY DIMENSIONS ARE IN INCHES. DIMENSIONS IN [] ARE IN MILLIMETERS.			
MATERIAL:		DIM AND TOL IN ACCORDANCE WITH ASME Y14.5 2009.		ORIGINAL DATE: 05/4/2020		TITLE: 1 GANG WP OUTLET BOX 1/2", 3/4" W/3-5 HOLES	
FINISH:		THIRD ANGLE PROJECTION		REDRAWN DATE:		FIRST MADE FOR WEATHERPROOF	
NEXT ASSY. USED ON APPLICATION				DRAWN BY: TAK		SIZE: C	
				CHECKED BY:		CODE IDENT. NO.: TP7	
				APPROVED BY:		REV. 1	
				APPROVED BY:		SCALE 1:1 WT. SHEET 1 OF 1	

 **CHS Controls AB**
Tel +46 42 38 61 00, Fax +46 42 38 61 29
chs@chscontrols.se www.chscontrols.se

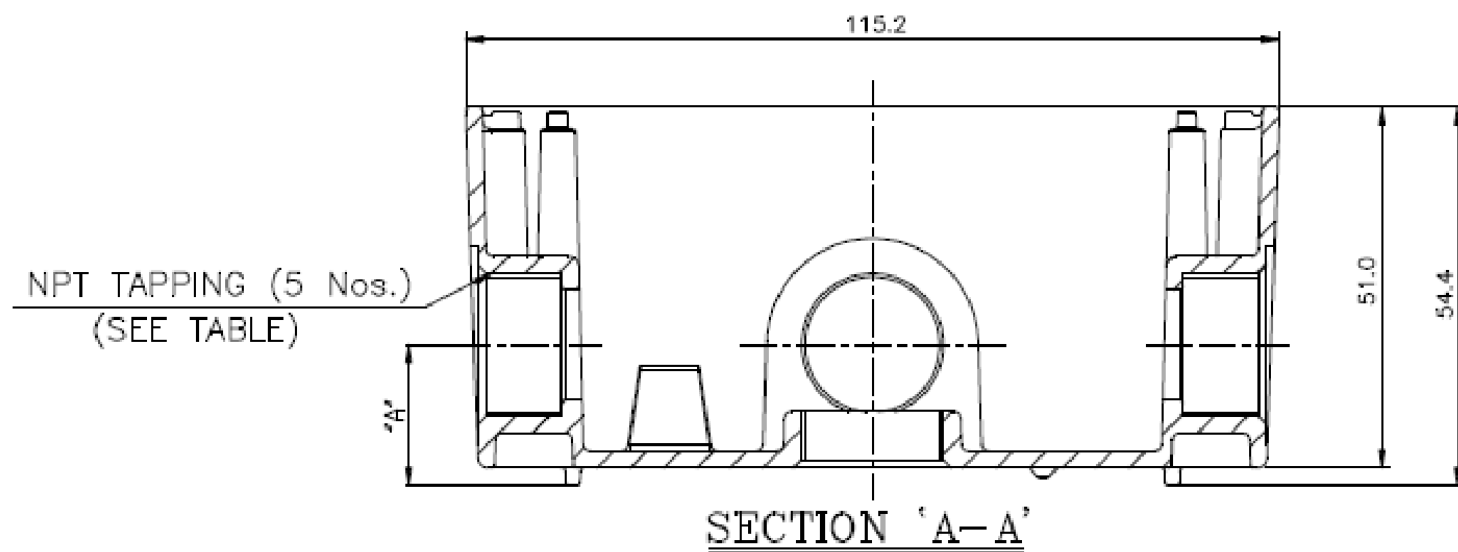
SW_REV 11/2015

CCHSY-SW-Template-C

ZONE	NO.	DESCRIPTION	DATE	APPRD.	LTR. NO.
	1	SUBMIT FOR RELEASE	5/7/2020	PW	

1 GANG 2" DEEP WP SIDE ENTRY OUTLET BOX

		A	MIN. VOLUME (CU. IN.)
TP7058	1/2" 5 HOLE - GREY	20.9	18.30
TP7066	3/4" 5 HOLE - GREY	20.9	18.00

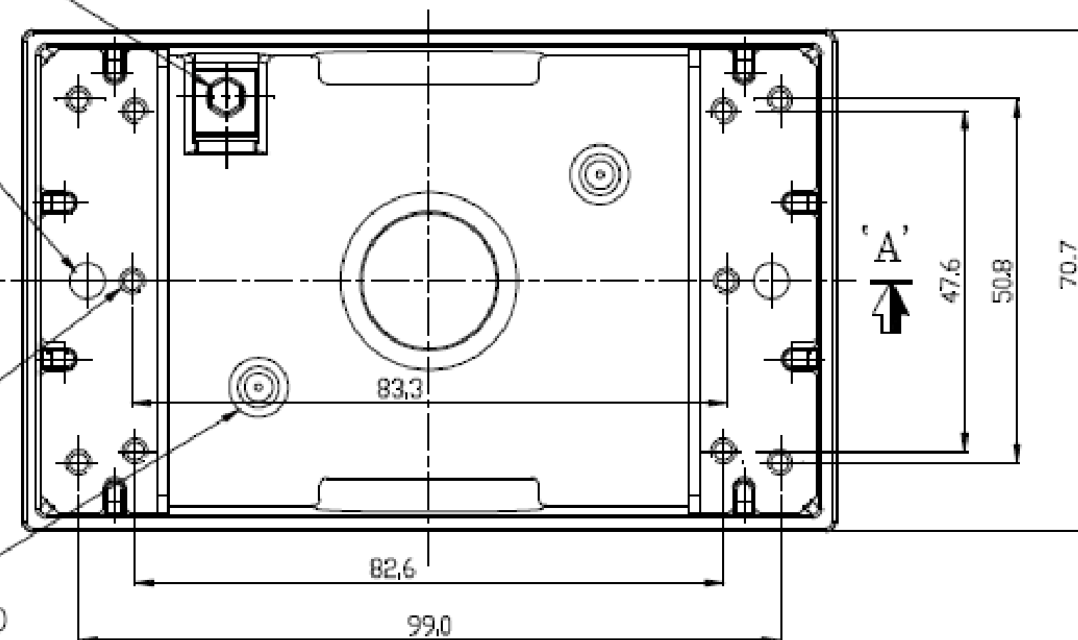


(GR SCREW NO.10 X 3/8"L)
(MAT- PLATED STEEL)
(1 NOS)

RBS-1(2 NOS)
(MAT-PLATED STEEL)

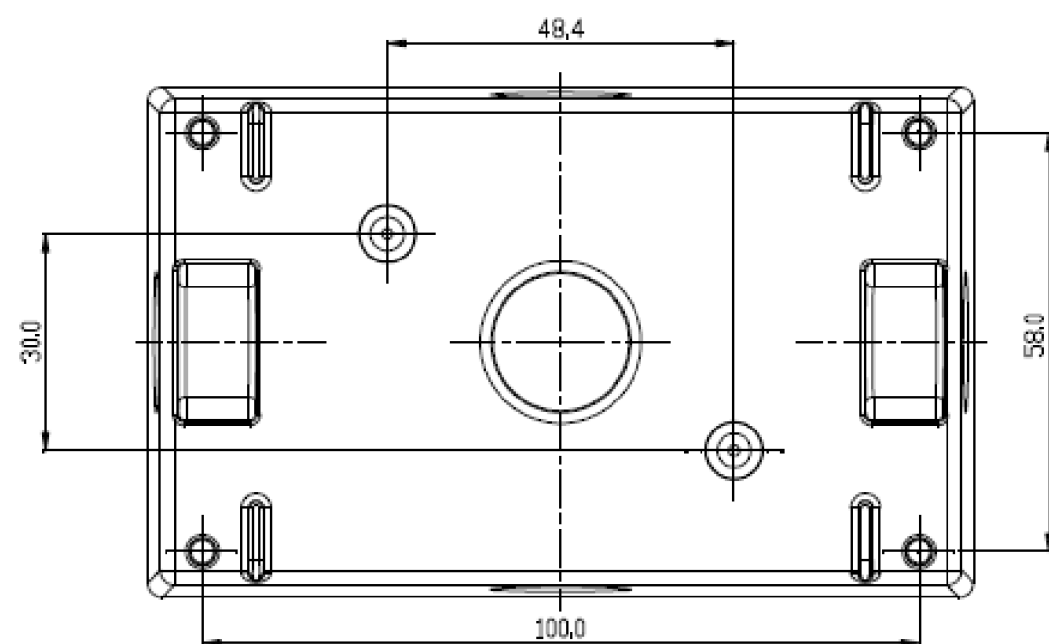
THREAD SIZE 6-32UNC
(TYP)

KNOCKOUT FOR BOX
MOUNTING (02 NOS)
DIA AFTER KNOCKOUT 4.0




ACCESSORIES:

SR.No.	DESCRIPTION	QTY
1	CLOSURE PLUG	2
2	MOUNTING LUG	2
3	SCREW (NO. 8 X 1/4"L)	2



NOTES:

- CERTIFICATION/LISTING:  
- ENVIRONMENTAL RATING:
-WEATHERPROOF
-WET LOCATION

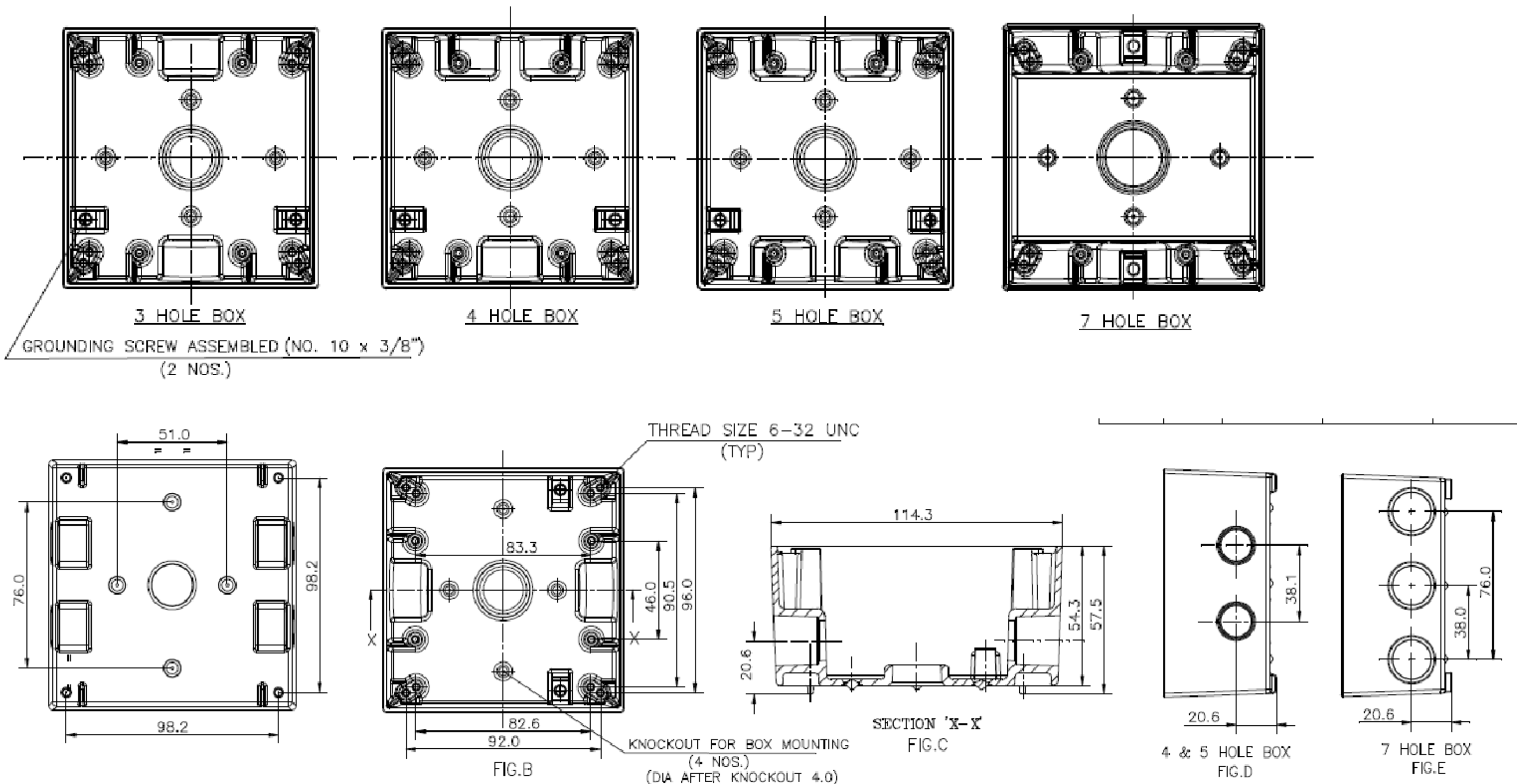
<small>THIS IS PROPERTY OF EATON AND CONTAINS CONFIDENTIAL AND TRADE SECRET INFORMATION. POSSESSION DOES NOT CONVEY ANY RIGHTS TO LOAN, SELL OR DISCLOSE SAID INFORMATION. REPRODUCTION OR USE FOR ANY PURPOSE OTHER THAN WHICH IT WAS SUPPLIED MAY NOT BE MADE WITHOUT EXPRESS WRITTEN PERMISSION OF EATON. THIS DRAWING IS ON LOAN AND IS TO BE RETURNED UPON REQUEST.</small>	TOLERANCES UNLESS OTHERWISE SPECIFIED		<small>UNLESS OTHERWISE SPECIFIED, ALL PRIMARY DIMENSIONS ARE IN INCHES. DIMENSIONS IN [] ARE IN MILLIMETERS.</small>																													
	<table border="1"> <tr> <th></th> <th>in.</th> <th>mm</th> </tr> <tr> <td>.X</td> <td>± .1</td> <td>± .3</td> </tr> <tr> <td>.XX</td> <td>± .01</td> <td>± .13</td> </tr> <tr> <td>.XXX</td> <td>± .005</td> <td>± .000</td> </tr> <tr> <td>ANGLES</td> <td>± 1.5°</td> <td>± 1.5°</td> </tr> </table>		in.	mm		.X	± .1	± .3	.XX	± .01	± .13	.XXX	± .005	± .000	ANGLES	± 1.5°	± 1.5°	<table border="1"> <tr> <td>ORIGINAL DATE</td> <td>05/4/2020</td> </tr> <tr> <td>REDRAWN DATE</td> <td></td> </tr> <tr> <td>DRAWN BY</td> <td>TAK</td> </tr> <tr> <td>CHECKED BY</td> <td></td> </tr> <tr> <td>APPROVED BY</td> <td></td> </tr> <tr> <td>APPROVED BY</td> <td></td> </tr> </table>	ORIGINAL DATE	05/4/2020	REDRAWN DATE		DRAWN BY	TAK	CHECKED BY		APPROVED BY		APPROVED BY		TITLE 1G 2" DP SIDE ENTRY OUTLET BOX 1/2" & 3/4" W/5 HOLES <small>FIRST MADE FOR WEATHERPROOF</small>	
		in.	mm																													
	.X	± .1	± .3																													
.XX	± .01	± .13																														
.XXX	± .005	± .000																														
ANGLES	± 1.5°	± 1.5°																														
ORIGINAL DATE	05/4/2020																															
REDRAWN DATE																																
DRAWN BY	TAK																															
CHECKED BY																																
APPROVED BY																																
APPROVED BY																																
<table border="1"> <tr> <td>MATERIAL:</td> <td></td> </tr> <tr> <td>FINISH:</td> <td></td> </tr> <tr> <td>NEXT ASSY.</td> <td>USED ON</td> </tr> <tr> <td colspan="2">APPLICATION</td> </tr> </table>	MATERIAL:		FINISH:		NEXT ASSY.	USED ON	APPLICATION		<small>DIM AND TOL IN ACCORDANCE WITH ASME Y14.5 2009.</small> THIRD ANGLE PROJECTION	<table border="1"> <tr> <td>SIZE</td> <td>CODE IDENT. NO.</td> <td rowspan="2"> TP7 </td> <td rowspan="2"> <small>REV. 1</small> </td> </tr> <tr> <td>C</td> <td></td> </tr> </table>	SIZE	CODE IDENT. NO.	TP7	<small>REV. 1</small>	C																	
MATERIAL:																																
FINISH:																																
NEXT ASSY.	USED ON																															
APPLICATION																																
SIZE	CODE IDENT. NO.	TP7	<small>REV. 1</small>																													
C																																
		<table border="1"> <tr> <td>SCALE 1:1</td> <td>WT.</td> <td>SHEET 1 OF 1</td> </tr> </table>	SCALE 1:1	WT.	SHEET 1 OF 1																											
SCALE 1:1	WT.	SHEET 1 OF 1																														

 **CHS Controls AB**
 Tel +46 42 38 61 00, Fax +46 42 38 61 29
 chs@chscontrols.se www.chscontrols.se



CHS Controls AB
 Tel +46 42 38 61 00, Fax +46 42 38 61 29
 chs@chscontrols.se www.chscontrols.se

ZONE	NO.	DESCRIPTION	DATE	APPRD.	LTR. NO.
	1	SUBMIT FOR RELEASE	5/7/2020	PW	



2 GANG WP OUTLET BOX		MIN. VOLUME (CU. IN.)
TP7088	2 DP 1/2" 3 HOLE - BRONZE	30.2
TP7086	2 DP 1/2" 3 HOLE - GRAY	30.2
TP7087	2 DP 1/2" 3 HOLE - WHITE	30.2
TP7094	2 DP 1/2" 4 HOLE - GRAY	30.2
TP7102	2 DP 1/2" 5 HOLE - GRAY	30.2
TP7103	2 DP 1/2" 5HL - WHT	30.2
TP7104	2 DP 1/2" 5HL - BZ	30.2
TP7110	2 DP 1/2" 7 HOLE - GRAY	30.2
TP7090	2 DP 3/4" 3 HOLE - GRAY	30.2
TP7098	2 DP 3/4" 4 HOLE - GRAY	30.2
TP7106	2 DP 3/4" 5 HOLE - GRAY	30.2
TP7114	2 DP 3/4" 7 HOLE - GRAY	30.2
TP7093	2 DP 1" 3HL - GRY	31.0

NOTES:

- CERTIFICATION/LISTING:
- ENVIRONMENTAL RATING:
 -WEATHERPROOF
 -WET LOCATION

ACCESSORIES:

SR.No.	DESCRIPTION	QTY
1	CLOSURE PLUG	2
2	MOUNTING LUG	2
3	CST SCREW (No. 8 x 1/4"L)	2

<small>THIS IS PROPERTY OF EATON AND CONTAINS CONFIDENTIAL AND TRADE SECRET INFORMATION. POSSESSION DOES NOT CONVEY ANY RIGHTS TO LOAN, SELL OR DISCLOSE SAID INFORMATION. REPRODUCTION OR USE FOR ANY PURPOSE OTHER THAN WHICH IT WAS SUPPLIED MAY NOT BE MADE WITHOUT EXPRESS WRITTEN PERMISSION OF EATON. THIS DRAWING IS ON LOAN AND IS TO BE RETURNED UPON REQUEST.</small>	TOLERANCES UNLESS OTHERWISE SPECIFIED <table border="1"> <tr><td></td><td>in.</td><td>mm</td></tr> <tr><td>.X</td><td>± .1</td><td>± .3</td></tr> <tr><td>.XX</td><td>± .01</td><td>± .13</td></tr> <tr><td>.XXX</td><td>± .005</td><td>± .000</td></tr> <tr><td>ANGLES</td><td>± 1.5°</td><td>± 1.5°</td></tr> </table>			in.	mm	.X	± .1	± .3	.XX	± .01	± .13	.XXX	± .005	± .000	ANGLES	± 1.5°	± 1.5°	<small>UNLESS OTHERWISE SPECIFIED, ALL PRIMARY DIMENSIONS ARE IN INCHES. DIMENSIONS IN [] ARE IN MILLIMETERS.</small>		
		in.	mm																	
	.X	± .1	± .3																	
	.XX	± .01	± .13																	
.XXX	± .005	± .000																		
ANGLES	± 1.5°	± 1.5°																		
MATERIAL:	DIM AND TOL IN ACCORDANCE WITH ASME Y14.5 2009.	ORIGINAL DATE	05/4/2020	TITLE	2 GANG WP OUTLET BOX 1/2" & 1" W/3 & 5 HOLES															
FINISH:	THIRD ANGLE PROJECTION	REDRAWN DATE	TAK	FIRST MADE FOR	WEATHERPROOF															
NEXT ASSY. USED ON APPLICATION		CHECKED BY		SIZE	C															
		APPROVED BY		CODE IDENT. NO.	TP7															
		APPROVED BY		SCALE	1:1															
				WT.																
				SHEET	1 OF 1															
				REV.	1															

SW_REV 11/2015 CCHSY-SW-Template-C