

Weatherproof outlet boxes



CHS Controls AB
Tel +46 42 38 61 00, Fax +46 42 38 61 29
chs@chscontrols.se www.chscontrols.se

Single-gang

Applications:

- For use as a weatherproof junction box or device housing in damp or wet locations when combined with weatherproof cover

Features:

- Durable die cast aluminum construction for long product life
- Powder paint finish for corrosive environments
- Pre-installed ground screw
- Tapered NPT hubs
- Includes mounting hardware, lugs and closure plugs

Certifications and compliances:

- UL File No. E-121488
- CSA C22.2 No. 18
- Complies with NEC Article 406.9(B)(1)
- NEMA 3R

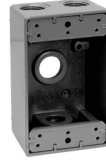


Standard material:

- Die cast aluminum



TP7010 - TP7018



TP7026, TP7034



TP7042, TP7050



TP7058, TP7066

SINGLE-GANG - 2" DEEP WITH LUGS

Cat. #	Outlet holes	Cubic inches	Color	Unit qty.	Wt. lbs. per 100
TP7010	3 - 1/2"	18.3	Gray	50	53.5
TP7010BULK	3 - 1/2"	18.3	Gray	50	53.5
TP7011	3 - 1/2"	18.3	White	50	53.5
TP7012	3 - 1/2"	18.3	Bronze	50	53.5
TP7018	3 - 3/4"	18.3	Gray	50	53.6
TP7019	3 - 3/4"	18.3	White	50	53.6
TP7020	3 - 3/4"	18.3	Bronze	50	53.6
TP7026	4 - 1/2"	17.0	Gray	50	55.9
TP7027	4 - 1/2"	17.0	White	50	55.9
TP7028	4 - 1/2"	17.0	Bronze	50	55.9
TP7034	4 - 3/4"	18.3	Gray	50	53.9
TP7035	4 - 3/4"	18.3	White	50	53.9
TP7036	4 - 3/4"	18.3	Bronze	50	53.9
TP7042	5 - 1/2"	18.3	Gray	50	56.0
TP7050	5 - 3/4"	17.0	Gray	50	55.5
TP7058	5 - 1/2" (side entry)	18.3	Gray	50	57.3
TP7066	5 - 3/4" (side entry)	18.0	Gray	50	53.9



TP7074, TP7078, TP7082

SINGLE-GANG - 2-5/8" DEEP WITH LUGS

Cat. #	Outlet holes	Cubic inches	Color	Unit qty.	Wt. lbs. per 100
TP7074	3 - 1/2"	25.5	Gray	25	64.3
TP7075	3 - 1/2"	25.5	White	25	64.3
TP7076	3 - 1/2"	25.5	Bronze	25	64.3
TP7078	3 - 3/4"	25.5	Gray	25	64.6
TP7082	3 - 1"	23.0	Gray	25	72.8

Weatherproof

Weatherproof outlet boxes

Two-gang and three-gang



Applications:

- For use as a weatherproof junction box or device housing in damp or wet locations when combined with weatherproof cover

Features:

- Durable die cast aluminum construction for long product life
- Powder paint finish for corrosive environments
- Pre-installed ground screw
- Tapered NPT hubs
- Includes mounting hardware, lugs and closure plugs

Certifications and compliances:

- UL File No. E-121488 
- CSA C22.2 No. 18 
- Complies with NEC Article 406.9(B)(1)
- NEMA 3R

Standard material:

- Die cast aluminum



TP7086 - TP7090



TP7093



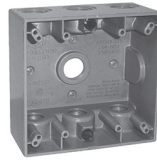
TP7094, TP7098



TP7102, TP7106



TP7118, TP7122



TP7110, TP7114



TP7125



TP7128

TWO-GANG - 2" DEEP

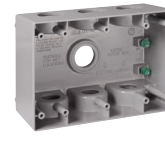
Cat. #	Outlet holes	Cubic inches	Color	Unit qty.	Wt. lbs. per 100
TP7086	3 - 1/2"	30.2	Gray	10	84.7
TP7087	3 - 1/2"	30.2	White	10	84.7
TP7088	3 - 1/2"	30.2	Bronze	10	84.7
TP7090	3 - 3/4"	30.2	Gray	10	83.6
TP7093	3 - 1"	31.0	Gray	10	87.5
TP7094	4 - 1/2"	30.2	Gray	10	82.0
TP7098	4 - 3/4"	30.2	Gray	10	83.9
TP7102	5 - 1/2"	30.2	Gray	10	80.2
TP7103	5 - 1/2"	30.2	White	10	80.2
TP7104	5 - 1/2"	30.2	Bronze	10	80.2
TP7118	5 - 1/2" (side entry)	31.0	Gray	10	83.1
TP7106	5 - 3/4"	30.2	Gray	10	79.8
TP7122	5 - 3/4" (side entry)	31.0	Gray	10	81.4
TP7110	7 - 1/2"	30.3	Gray	10	78.4
TP7125	7 - 1/2" (side entry)	31.0	Gray	10	80.2
TP7114	7 - 3/4"	30.2	Gray	10	73.3
TP7128	7 - 3/4" (side entry)	31.0	Gray	10	81.4



TP7126, TP7130, TP7134



TP7137, TP7138, TP7142



TP7143



TP7144

TWO-GANG - 2-3/8" DEEP

Cat. #	Outlet holes	Cubic inches	Color	Unit qty.	Wt. lbs. per 100
TP7126	5 - 1/2"	36.0	Gray	6	102.6
TP7130	5 - 3/4"	36.0	Gray	6	95.2
TP7134	5 - 1"	36.0	Gray	6	104.2
TP7137	7 - 1/2" (side entry)	36.0	Gray	6	95.5
TP7138	7 - 3/4" (side entry)	36.0	Gray	6	95.2
TP7142	7 - 1" (side entry)	36.0	Gray	6	107.3

THREE-GANG - 2-3/8" DEEP

Cat. #	Outlet holes	Cubic inches	Color	Unit qty.	Wt. lbs. per 100
TP7143	7 - 3/4"	55.0	Gray	5	139.2
TP7144	7 - 1"	55.0	Gray	5	131.9

Weatherproof outlet covers

Single-gang

Applications:

- Used to provide weatherproof protection for outdoor receptacles

Features:

- Durable die cast aluminum construction for long product life
- Self-closing cover provides weatherproof protection when device not in use
- Powder paint finish for corrosive environments
- Includes gasket and hardware

Certifications and compliances:

- UL File No. E-121488
- CSA C22.2 No. 18
- Complies with NEC Article 406.9(B)(1)
- NEMA 3R



Standard materials:

- Covers – die cast aluminum
- Gaskets – polyethylene foam



Weatherproof

Weatherproof outlet covers



CHS Controls AB
Tel +46 42 38 61 00, Fax +46 42 38 61 29
chs@chscontrols.se www.chscontrols.se

Single-gang

Cat. #	Description	Color	Mounting orientation	Unit qty.	Wt. lbs. per 100
TP7199 ^A	Duplex	Gray	Vertical	50	29.3
TP7198 ^A	Duplex	White	Vertical	50	29.3
TP7197 ^A	Duplex	Bronze	Vertical	50	29.3
TP7200 ^B	GFCI, duplex, 1.38" round	Gray	Vertical	24	43.9
TP7201 ^B	GFCI, duplex, 1.38" round	White	Vertical	24	43.9
TP7205 ^B	GFCI, duplex, 1.38" round	Bronze	Vertical	24	43.9
TP7202 ^A	Single receptacle or switch, 1.425" round	Gray	Vertical	25	16.9
TP7203 ^A	Single receptacle or switch, 1.425" round	White	Vertical	25	16.9
TP7204 ^A	Single receptacle or switch, 1.425" round	Bronze	Vertical	25	16.9
TP7206 ^A	Duplex or combo switch	Natural	Horizontal	50	18.6
TP7207 ^A	Duplex or combo switch	Gray	Horizontal	50	19.2
TP7208 ^A	Duplex or combo switch	White	Horizontal	50	19.2
TP7209 ^A	Duplex or combo switch	Bronze	Horizontal	50	19.2
TP7214 ^A	Single receptacle or switch, 1.625" round	Gray	Vertical	25	30.4
TP7218 ^A	20/30/50A receptacle, 2.125" round	Gray	Vertical	25	28.6
TP7221 ^A	20/30/50A receptacle, 2.125" round	White	Vertical	25	28.6
TP7219 ^A	20/30/50A receptacle, 2.125" round	Bronze	Vertical	25	28.6
TP7232 ^A	Duplex, switch, combination device	Natural	Horizontal	50	17.9
TP7233 ^A	Duplex, switch, combination device	Gray	Horizontal	50	18.5
TP7236 ^A	GFCI	Gray	Horizontal	25	21.8
TP7237 ^A	GFCI	White	Horizontal	25	21.8
TP7238 ^A	GFCI	Bronze	Horizontal	25	21.8
TP7239 ^B	GFCI, duplex, 1.38" round	Gray	Horizontal	24	43.7
TP7245 ^B	GFCI, duplex, 1.38" round	White	Horizontal	24	43.7
TP7246 ^B	GFCI, duplex, 1.38" round	Bronze	Horizontal	24	43.7
TP7240 ^A	GFCI	Gray	Vertical	25	22.5
TP7241 ^A	GFCI	White	Vertical	25	22.5
TP7242 ^A	GFCI	Bronze	Vertical	25	22.5
TP7212 ^A	Single receptacle or switch, 1.425" round	Gray	Vertical	15	29.9
TP7217 ^A	Single receptacle or switch, 1.64" round	Gray	Vertical	15	30.0
TP7285 ^B	Duplex cover with receptacle	Gray	Horizontal	10	31.9
TP7286 ^B	Duplex cover with receptacle	White	Horizontal	10	31.9
TP7287 ^B	Duplex cover with receptacle	Bronze	Horizontal	10	31.9
TP7265 ^B	GFCI, duplex, 1.38" round	Gray	Vertical/horizontal	12	27.3
TP7267 ^B	GFCI, duplex, 1.38" round	White	Vertical/horizontal	12	27.3
TP7266 ^B	GFCI, duplex, 1.38" round	Bronze	Vertical/horizontal	12	27.3

^A UL Listed and CSA certified.

^B cULus Listed.

Weatherproof

Weatherproof outlet covers

Two-gang

Applications:

- Used to provide weatherproof protection for outdoor receptacles

Features:

- Durable die cast aluminum construction for long product life
- Self-closing cover provides weatherproof protection when device not in use
- Powder paint finish for corrosive environments
- Includes gasket and hardware

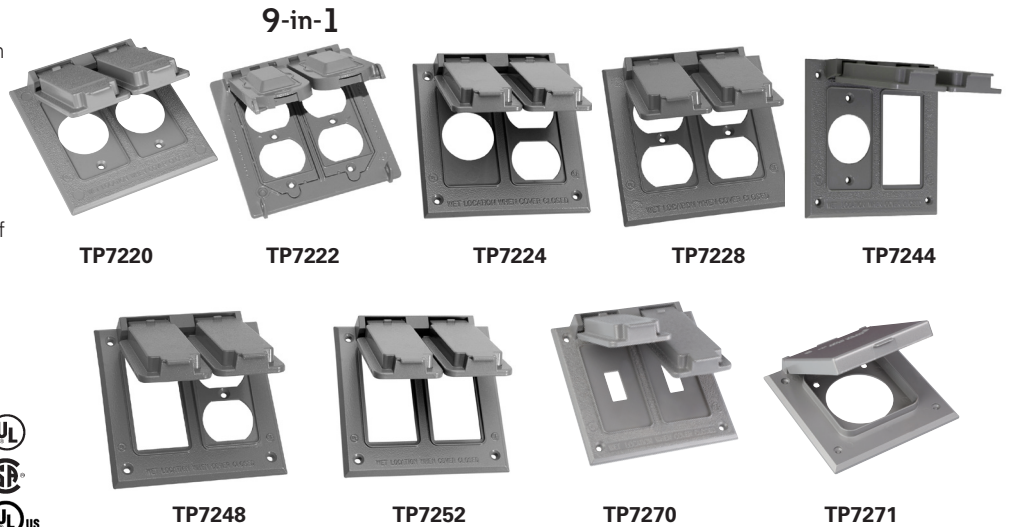
Certifications and compliances:

- UL File No. E-121488
- CSA C22.2 No. 18
- cULus
- Complies with NEC Article 406.9(B)(1)
- NEMA 3R



Standard materials:

- Covers – die cast aluminum
- Gaskets – polyethylene foam



Cat. #	Description	Color	Unit qty.	Wt. lbs. per 100
TP7220 ^A	Two single receptacles and/or switches, 1.406" round	Gray	10	62.7
TP7222 ^B	Multi-use, two GFCI, duplex or 1.375" round or combination	Gray	8	67.9
TP7224 ^A	One single receptacle or switch (1.406" dia.) and one duplex, switch or combination device	Gray	10	60.2
TP7228 ^A	Two duplex, switch or combination device	Gray	10	60.3
TP7229 ^A	Two duplex, switch or combination device	White	10	60.3
TP7230 ^A	Two duplex, switch or combination device	Bronze	10	60.3
TP7244 ^C	Vertical GFCI and one single switch or receptacle	Gray	10	61.5
TP7248 ^A	Vertical GFCI and one duplex, switch or combination device	Gray	10	59.4
TP7249 ^A	Vertical GFCI and one duplex, switch or combination device	White	10	59.4
TP7250 ^A	Vertical GFCI and one duplex, switch or combination device	Bronze	10	59.4
TP7252 ^A	Two GFCI	Gray	10	58.4
TP7270 ^A	Two vertical switches	Gray	25	64.5
TP7271 ^C	20/30/50A receptacle, 2.125" round	Gray	8	60.2

^A UL Listed and CSA certified.

^B cULus Listed.

^C UL Listed.

Weatherproof outlet covers

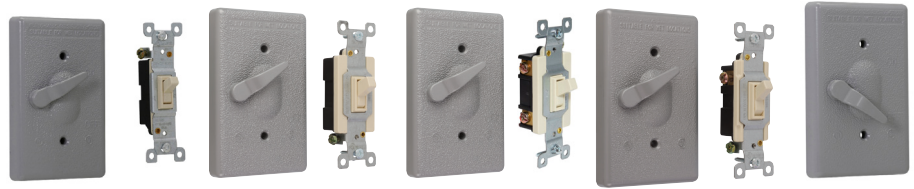
Single-gang and two-gang toggle switch

Applications:

- Used to provide weatherproof protection for an outdoor switch

Features:

- Durable die cast aluminum construction for long product life
- Powder paint finish for corrosive environments
- Includes gasket and hardware



TP7260
5/8" thick

TP7277

TP7278

TP7275

TP7280

Certifications and compliances:

- UL File No. E-121488
- CSA C22.2 No. 18
- cULus
- Complies with NEC Article 406.9(B)(1)
- NEMA 3R



Standard materials:

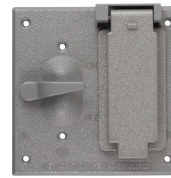
- Covers – die cast aluminum
- Gaskets – polyethylene foam

SINGLE-GANG

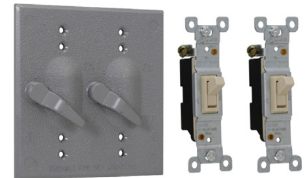
Cat. #	Description	Color	Unit qty.	Wt. lbs. per 100
TP7260 ^B	Toggle switch cover with SP 125V 15A switch	Gray	50	26.8
TP7261 ^B	Toggle switch cover with SP 125V 15A switch	White	50	26.8
TP7262 ^B	Toggle switch cover with SP 125V 15A switch	Bronze	50	26.8
TP7280 ^A	Extended switch cover (for use with commercial and residential grade switch)	Gray	50	17.7
TP7281 ^A	Extended switch cover (for use with commercial and residential grade switch)	White	50	17.7
TP7282 ^A	Extended switch cover (for use with commercial and residential grade switch)	Bronze	50	17.7
TP7277 ^B	Toggle switch cover with SP 125V 20A switch	Gray	50	28.7
TP7278 ^B	Toggle switch cover with DP 125V 20A switch	Gray	50	28.3
TP7275 ^B	Toggle switch cover with 3-way 125V 15A switch	Gray	50	28.8



TP7268



TP7269



TP7272

TWO-GANG

Cat. #	Description	Color	Unit qty.	Wt. lbs. per 100
TP7268 ^C	Toggle switch cover	Gray	10	34.3
TP7269 ^A	Vertical GFCI, toggle switch	Gray	8	47.0
TP7272 ^B	Toggle switch cover with (2) SP 125V 15A switches	Gray	10	51.8

^A UL Listed and CSA certified.

^B cULus Listed.

^C UL Listed.

Weatherproof

Weatherproof outlet covers

Blank steel and lampholder

Applications:

- Lampholder covers provide a mounting location for single-gang or 4" round weatherproof outlet box
- Blank steel covers provide weatherproof protection when box is not in use

Features:

Lampholder cover:

- Durable die cast aluminum construction for long product life
- Provide mounting for lampholders and accessories
- Powder paint finish for corrosive environments
- Two- and three-hole covers include two closure plugs
- Includes gasket and hardware

Blank cover:

- Stamped steel
- Includes gasket and hardware

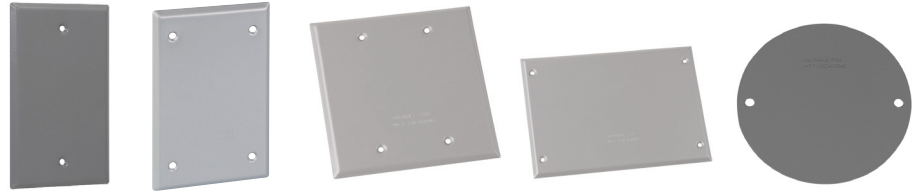
Certifications and compliances:



- cULus File Nos. E-121488, E163827
- Complies with NEC Article 406.9(B)(1)
- NEMA 3R

Standard materials:

- Blank covers – steel
- Lampholder covers – die cast aluminum



TP7292 - TP7294

TP7291

TP7296 - TP7298

TP7295

TP7158 - TP7160

BLANK STEEL

Cat. #	Description	Outlet holes	Color	Unit qty.	Wt. lbs. per 100
TP7292	Single-gang	–	Gray	100	14.0
TP7293	Single-gang	–	White	100	14.0
TP7294	Single-gang	–	Bronze	100	14.0
TP7291	Single-gang (box mount)	–	Gray	20	14.4
TP7296	Two-gang	–	Gray	50	22.6
TP7297	Two-gang	–	White	50	22.6
TP7298	Two-gang	–	Bronze	50	22.6
TP7295	Three-gang	–	Gray	25	31.6
TP7158	4" round	–	Gray	50	24.0
TP7159	4" round	–	White	50	24.0
TP7160	4" round	–	Bronze	50	24.0



TP7300 - TP7302

TP7304

TP7308 - TP7310

TP7312 - TP7314

TP7320 - TP7322

LAMPHOLDER

Cat. #	Description	Outlet holes	Color	Unit qty.	Wt. lbs. per 100
TP7300	4" round	1 - 1/2"	Gray	25	12.0
TP7301	4" round	1 - 1/2"	White	25	12.0
TP7302	4" round	1 - 1/2"	Bronze	25	12.0
TP7304	4" round	2 - 1/2"	Gray	25	15.7
TP7305	4" round	2 - 1/2"	White	25	15.7
TP7306	4" round	2 - 1/2"	Bronze	25	15.7
TP7308	4" round	3 - 1/2"	Gray	25	15.4
TP7309	4" round	3 - 1/2"	White	25	15.4
TP7310	4" round	3 - 1/2"	Bronze	25	15.4
TP7312	Rectangular	1 - 1/2"	Gray	25	11.5
TP7313	Rectangular	1 - 1/2"	White	25	11.5
TP7314	Rectangular	1 - 1/2"	Bronze	25	11.5
TP7316	Rectangular	2 - 1/2"	Gray	25	14.5
TP7317	Rectangular	2 - 1/2"	White	25	14.5
TP7318	Rectangular	2 - 1/2"	Bronze	25	14.5
TP7320	Rectangular	3 - 1/2"	Gray	25	14.7
TP7321	Rectangular	3 - 1/2"	White	25	14.7
TP7322	Rectangular	3 - 1/2"	Bronze	25	14.7

Weatherproof